

A belka łącząca x 1 szt | connecting beam x 1 pc



INSTRUKCJA MONTAŻU I ASSEMBLY INSTRUCTION

EB 08, EB 10, EB 12, EB 14, EB 16, EB 18

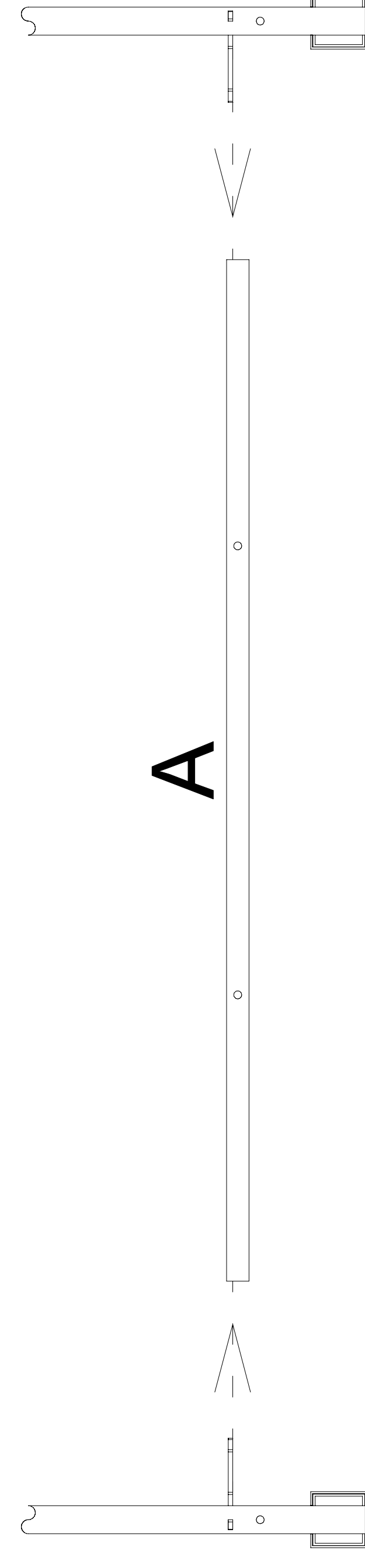
2020.07



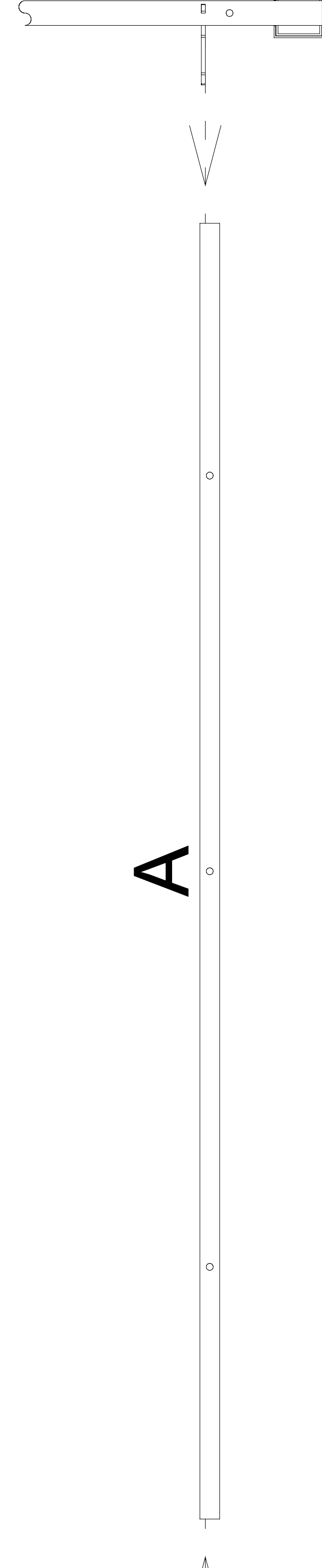
EB 08, EB 10, EB 12

EB 14, EB 16, EB 18

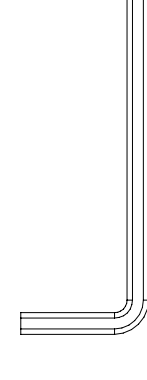
1



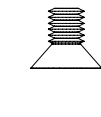
1



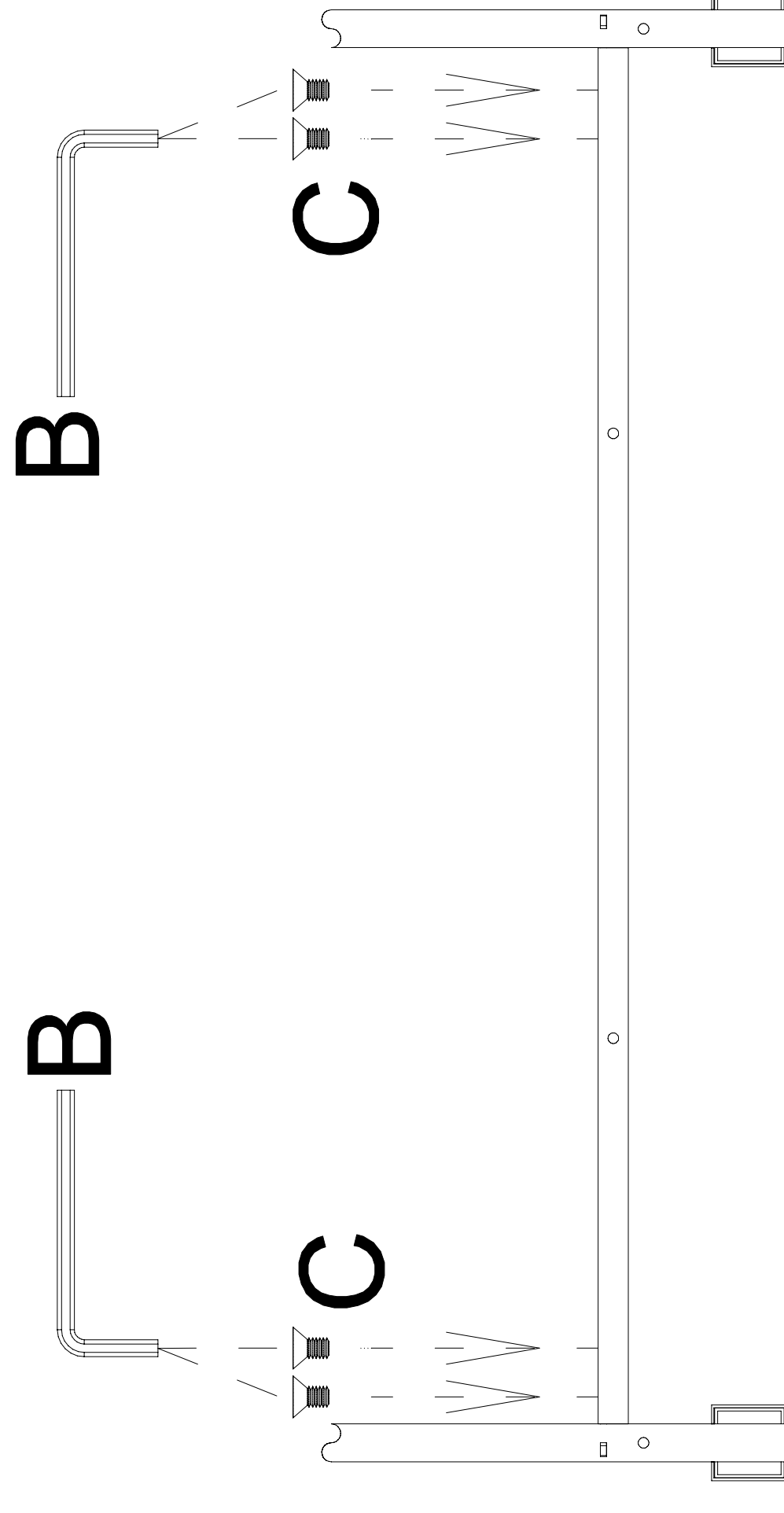
B klucz imbusowy x 1 szt | allen key x 1 pc



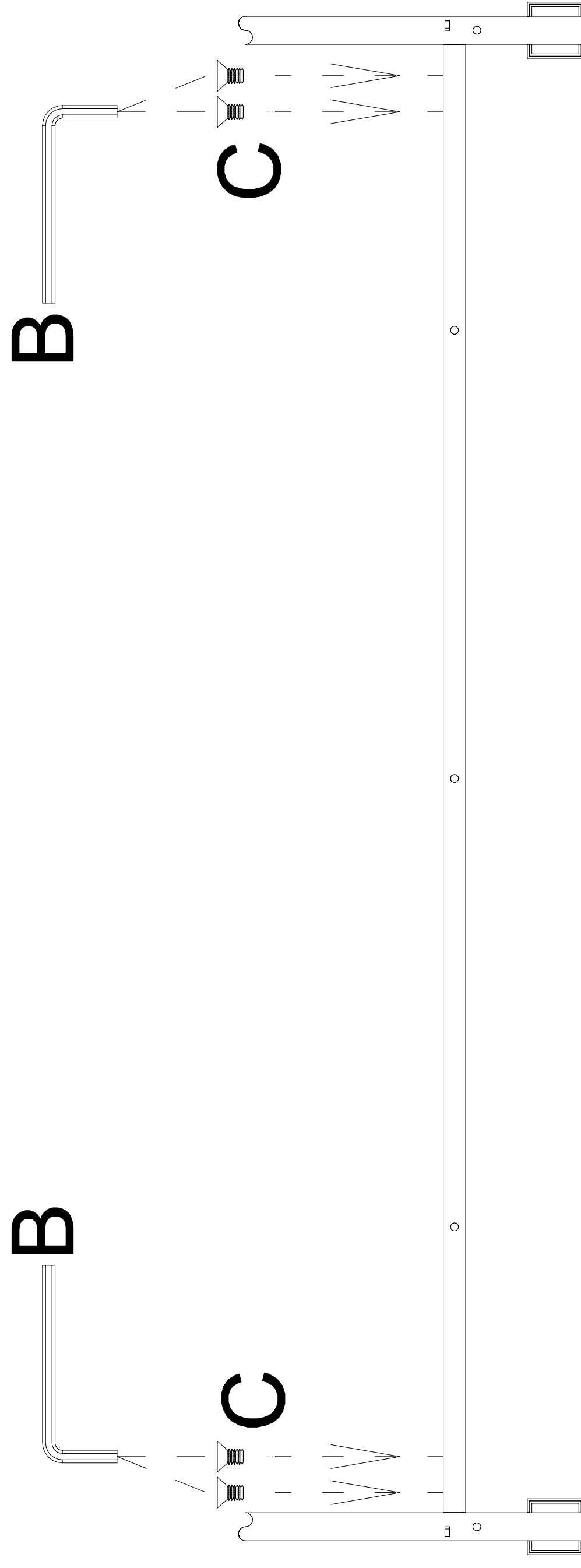
C śruba x 4 szt | screw x 4 pcs



2



2

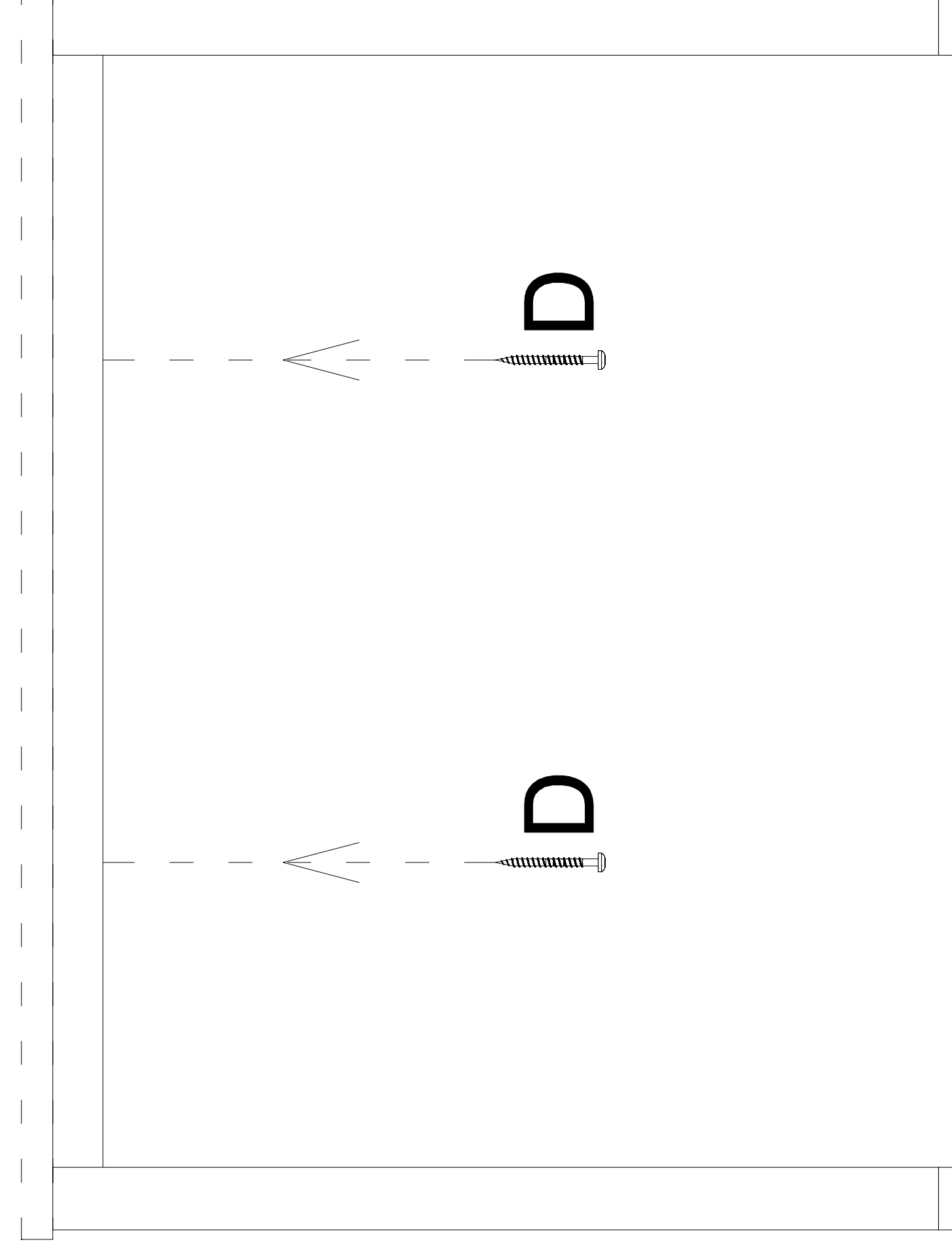


D wkręt | sharp screw

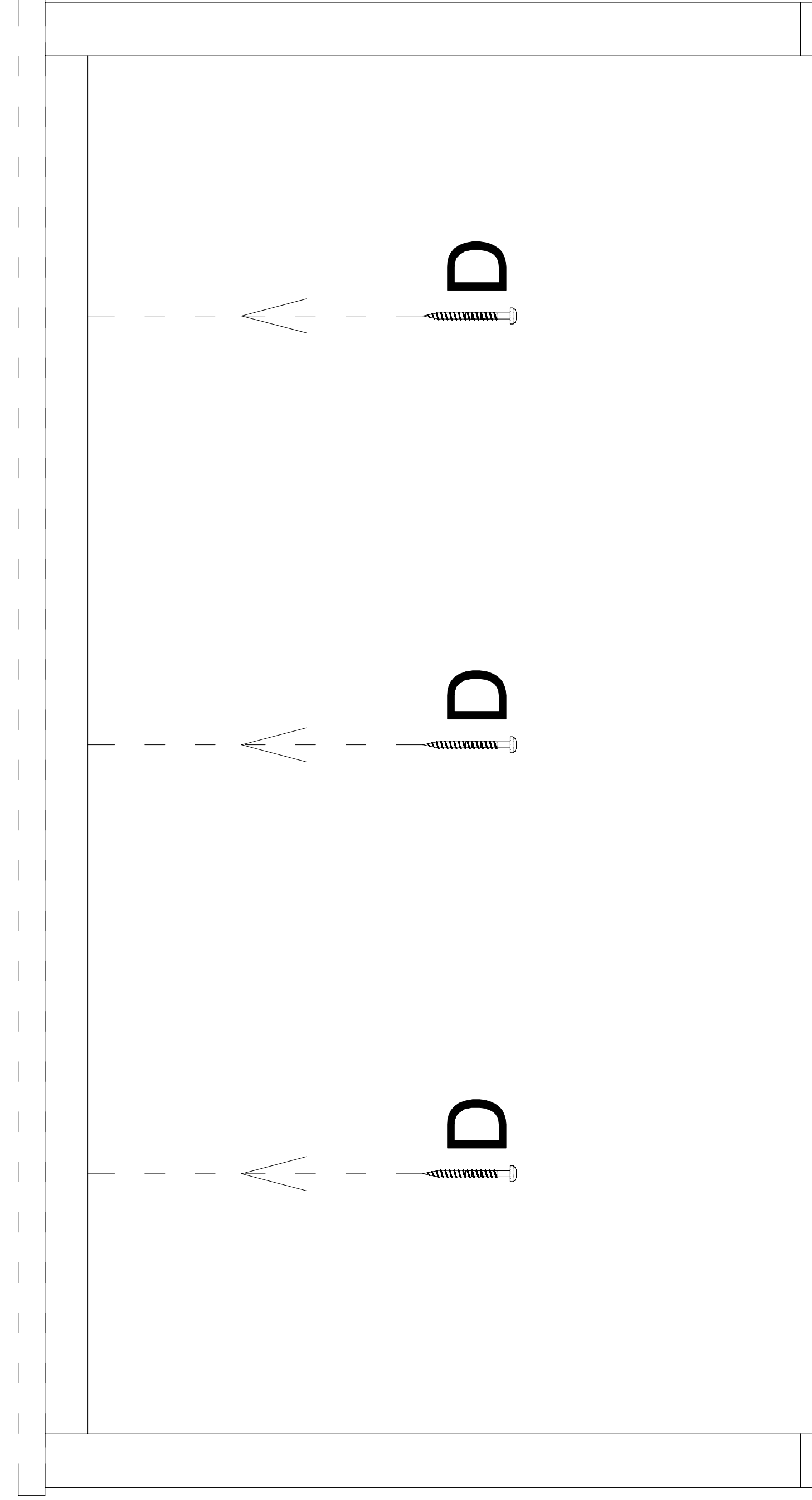
EB 08, EB 10, EB 12 x 2 szt | x 2 pcs
EB 14, EB 16, EB 18 x 3 szt | x 3 pcs



3



3



potrzebne narzędzia | necessary tools

