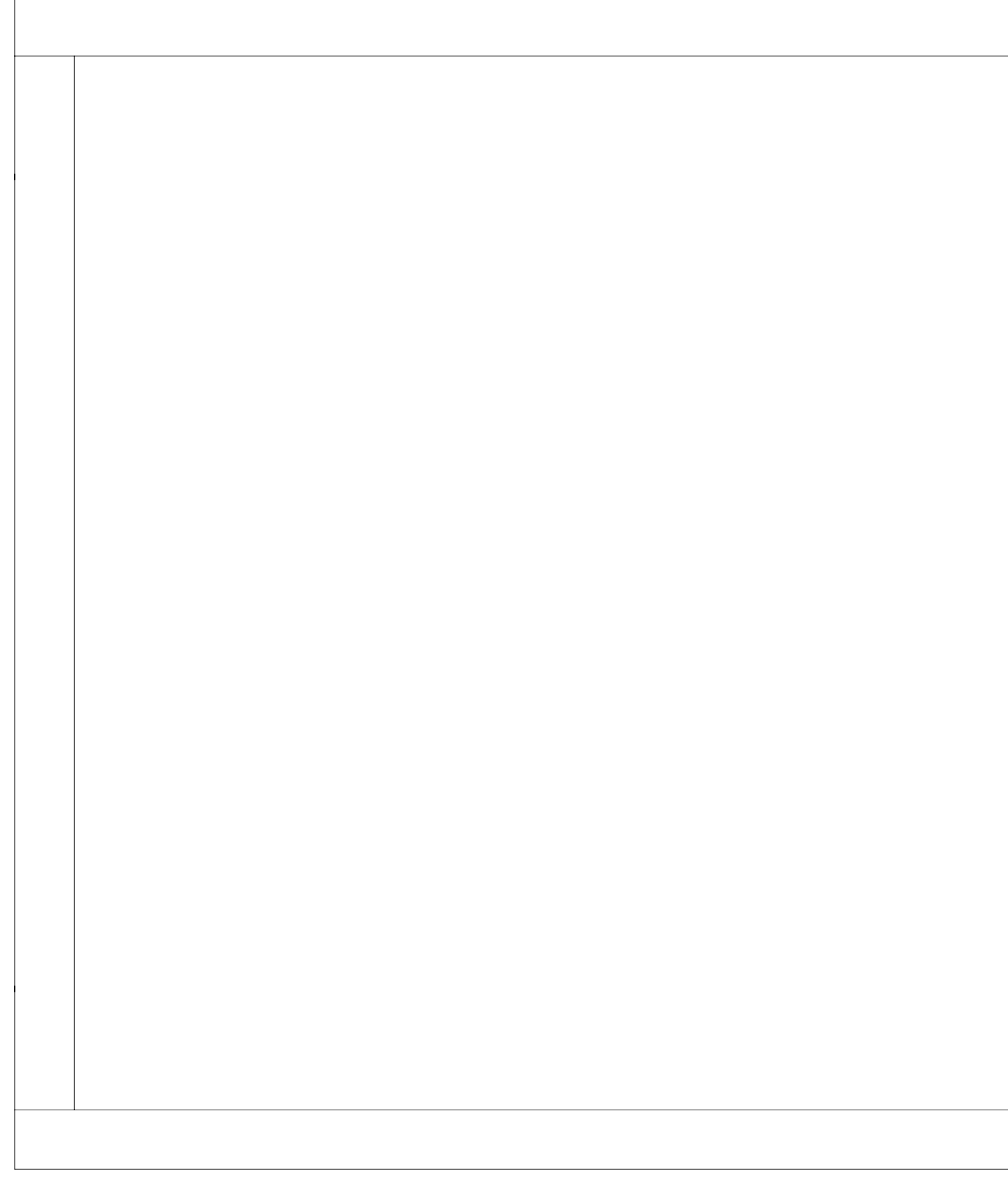
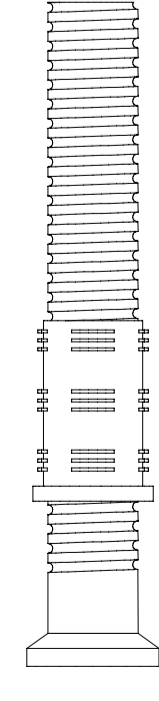


A rama stelaża x 1 szt | steel legs x 1 pc



B regulator x 2 szt | adjuster x 2 pcs



C wkręt x 2 szt | sharp screw x 2 pcs



potrzebne narzędzia | necessary tools

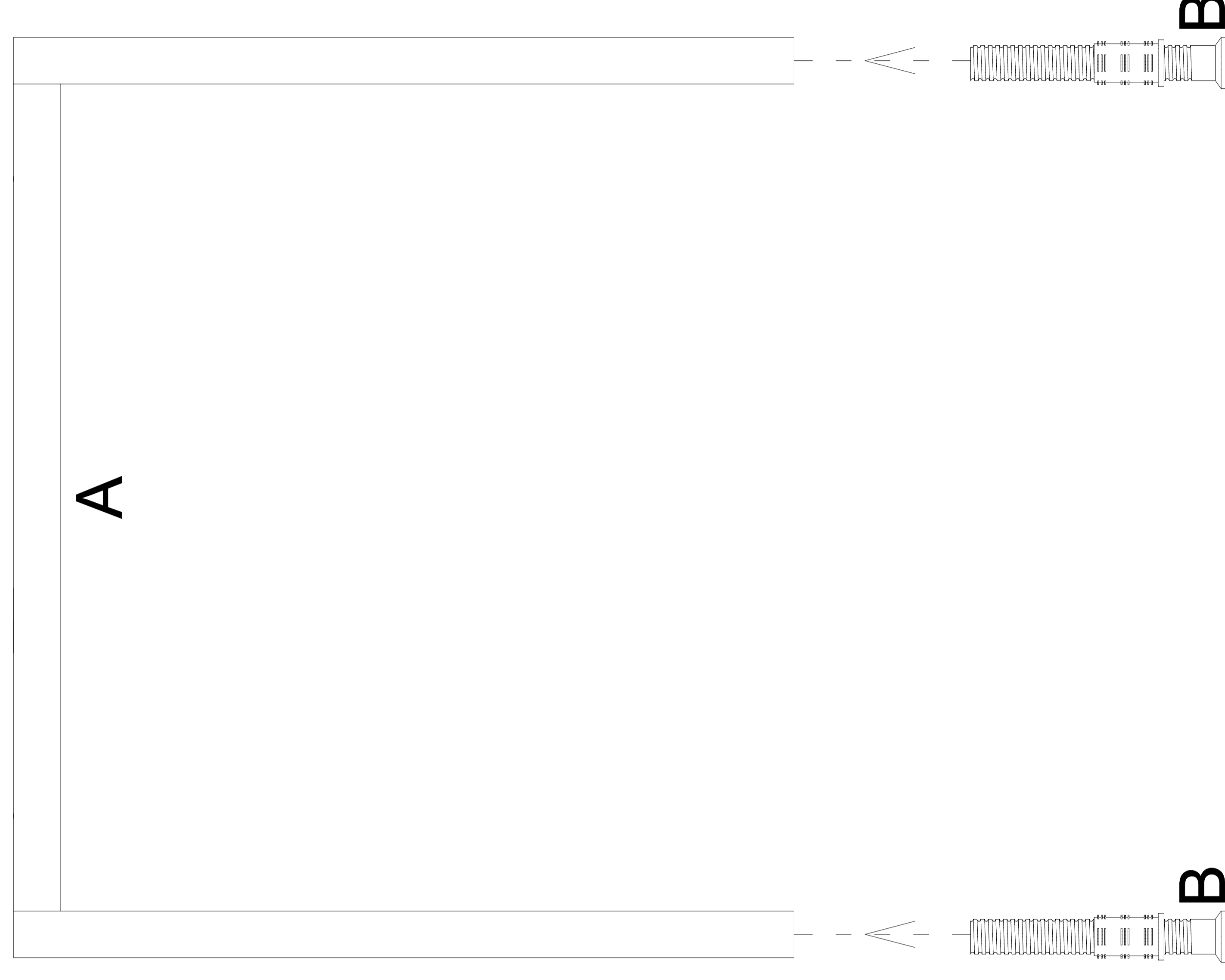


INSTRUKCJA MONTAŻU I ASSEMBLY INSTRUCTION

EC 4406, EC 4407, EC 4408

2020.07

1



2

