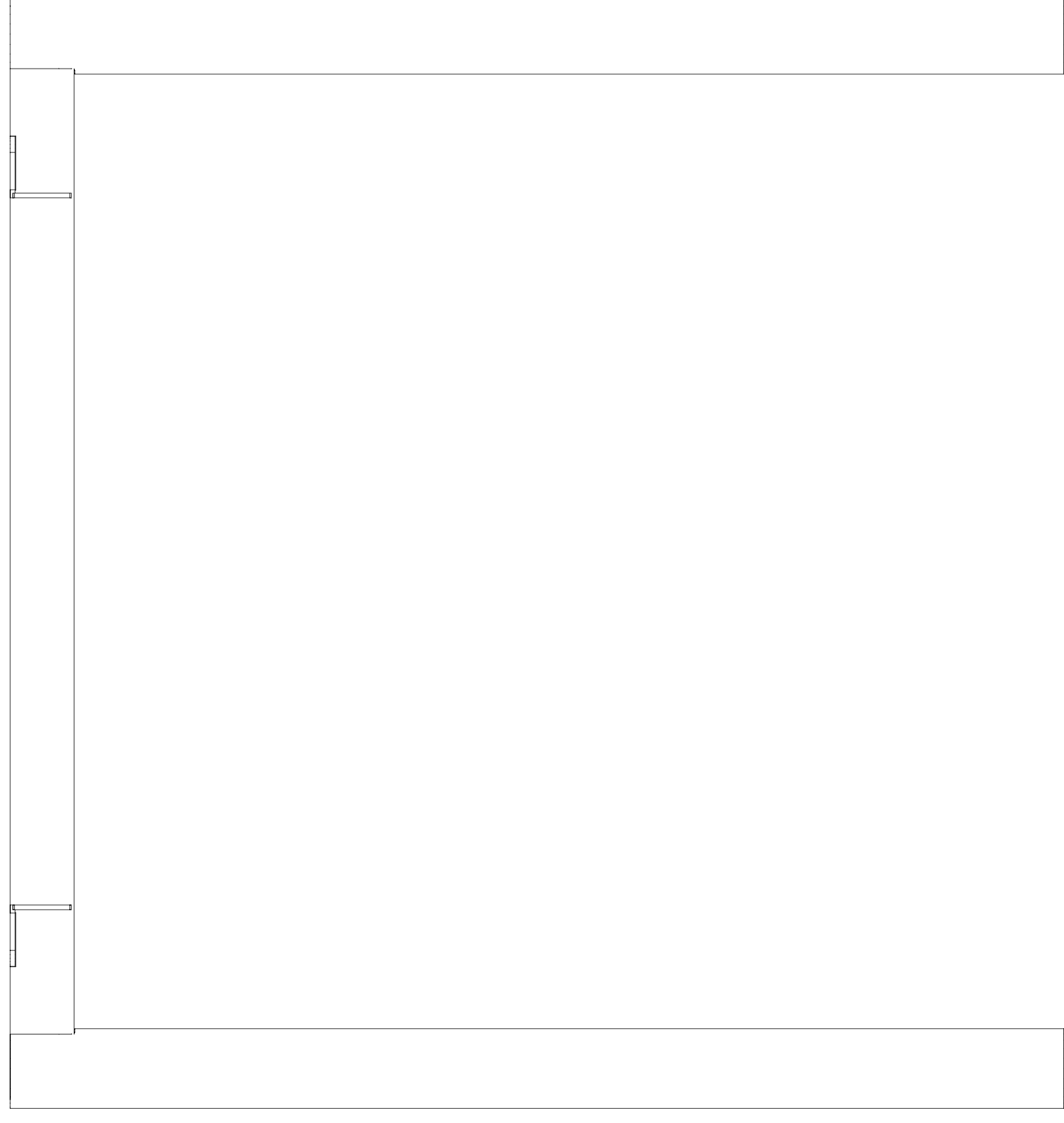
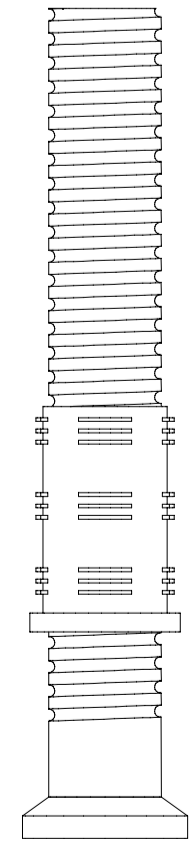


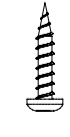
A rama stelaża x 1 szt | steel legs x 1 pc



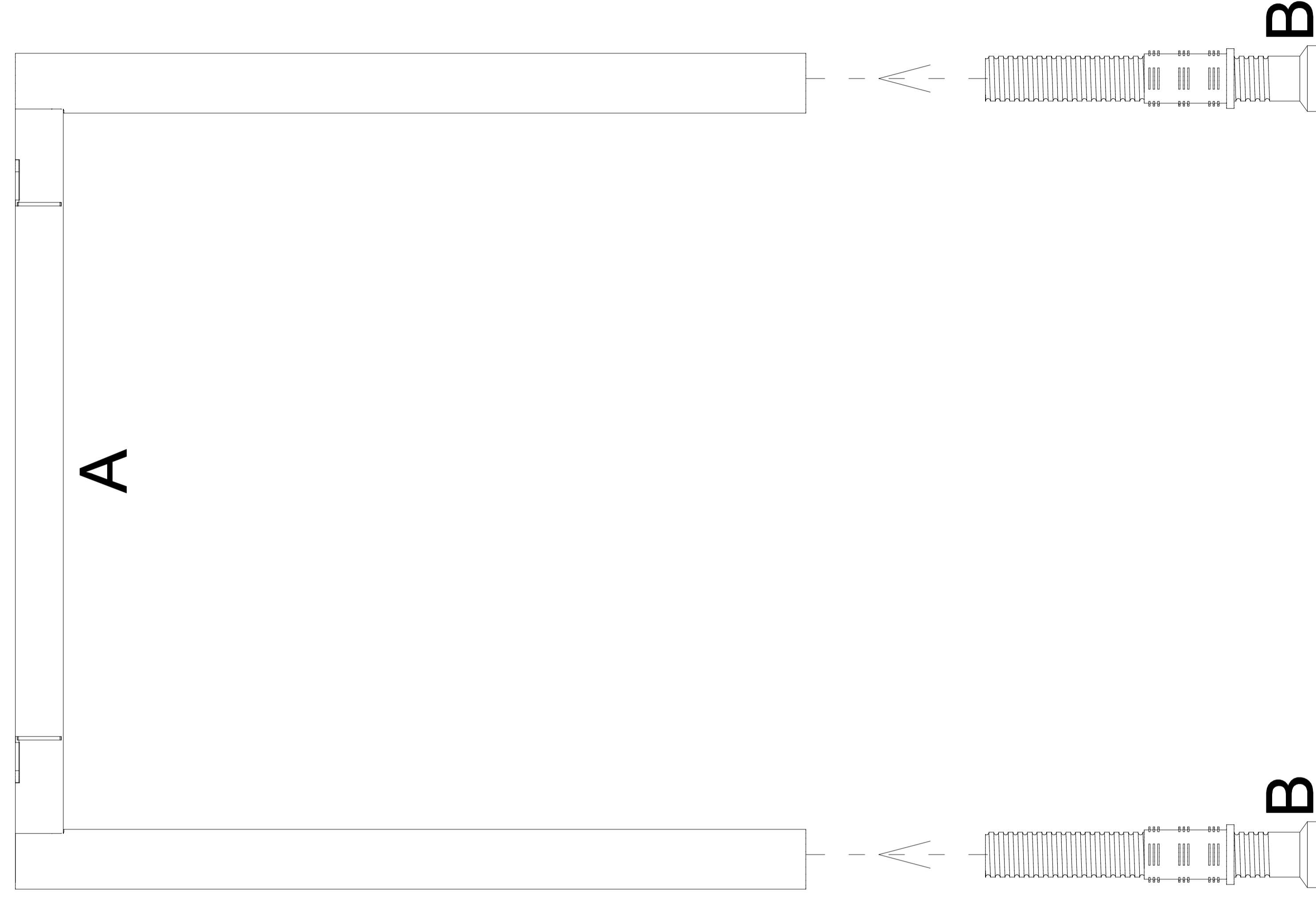
B regulator x 2 szt | adjuster x 2 pcs



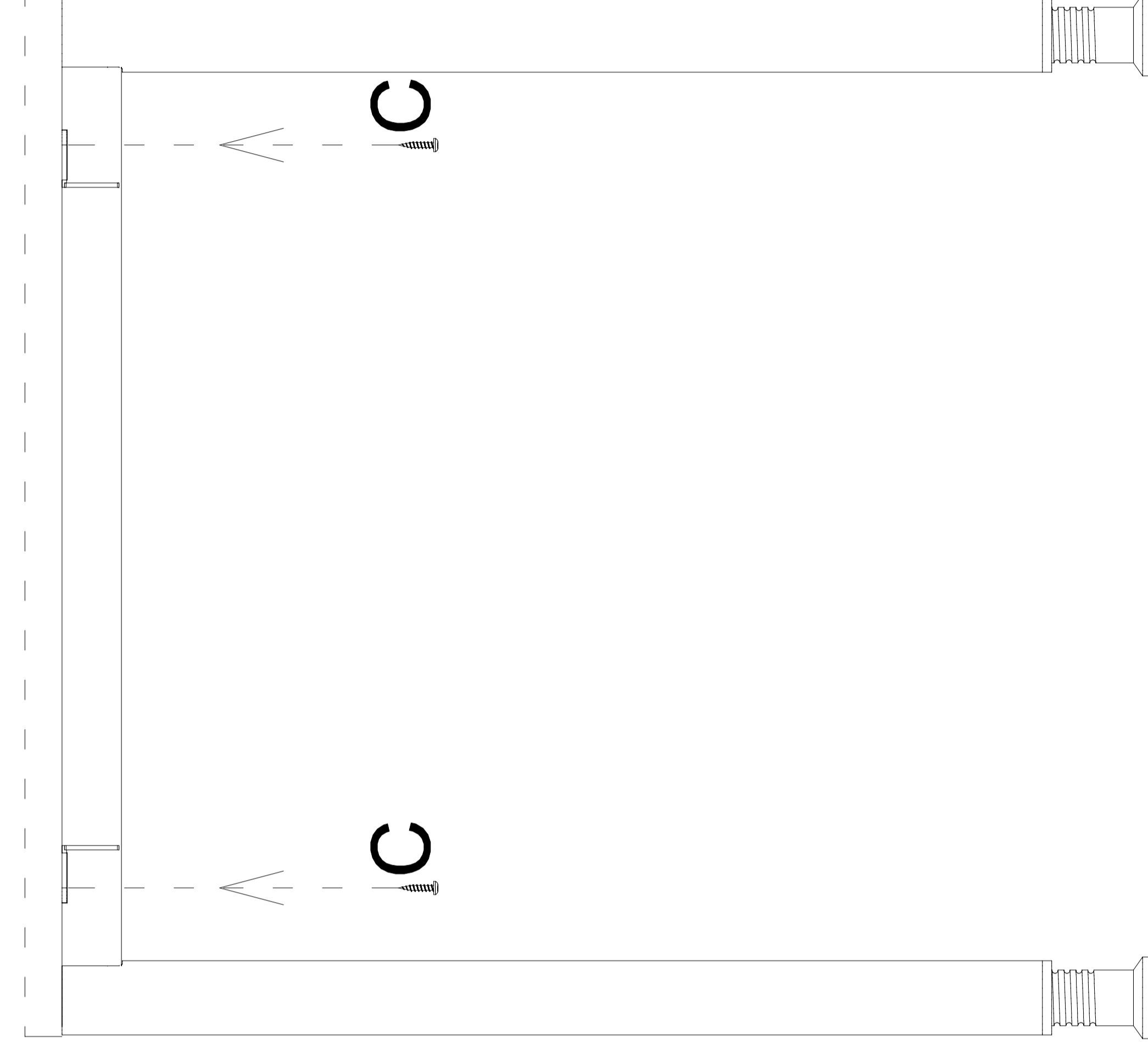
C wkręt x 4 szt | sharp screw x 4 pcs



1



2



potrzebne narzędzia | necessary tools



INSTRUKCJA MONTAŻU | ASSEMBLY INSTRUCTION

EC 5007-P, EC 5008-P

2020.07

