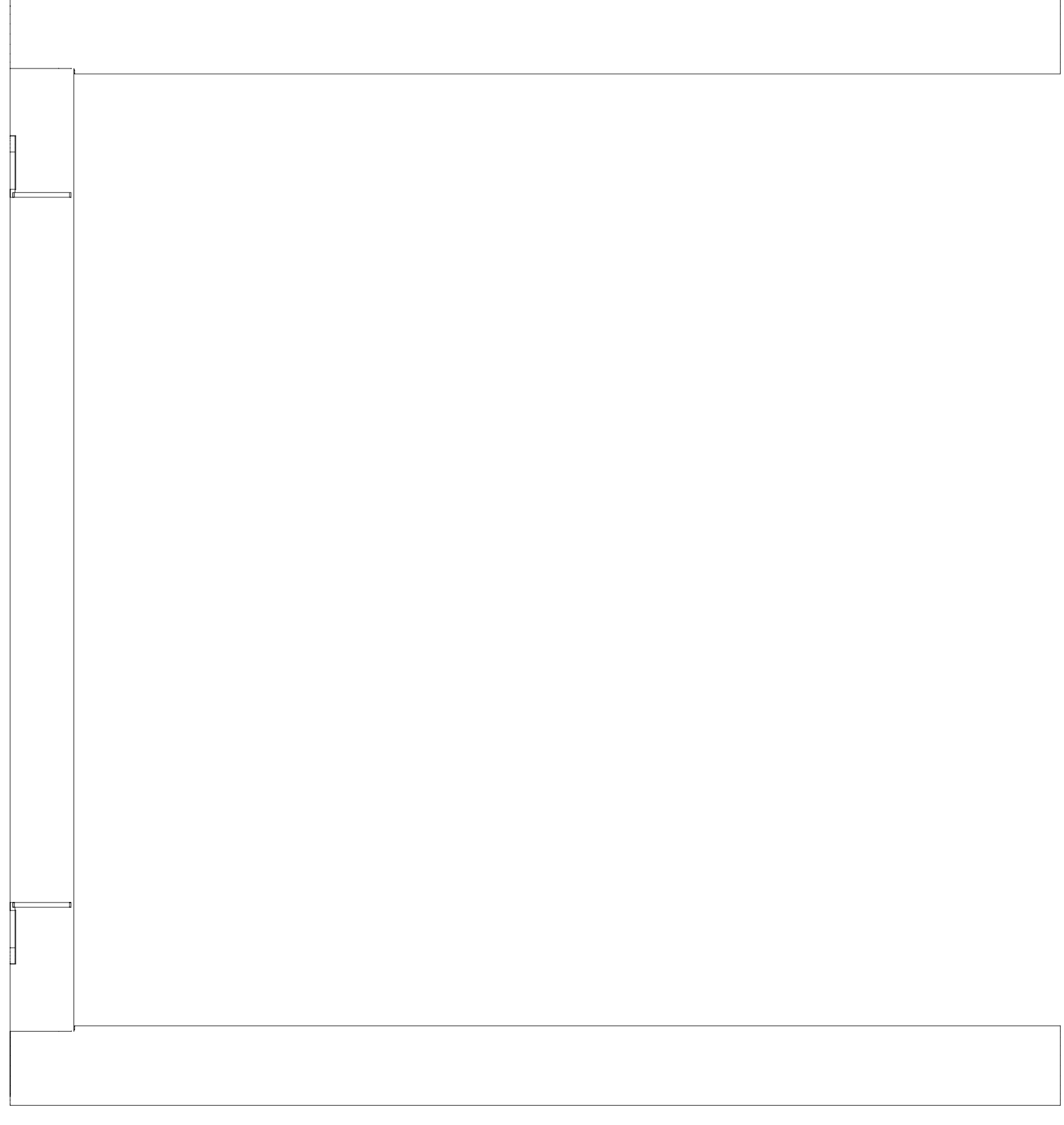
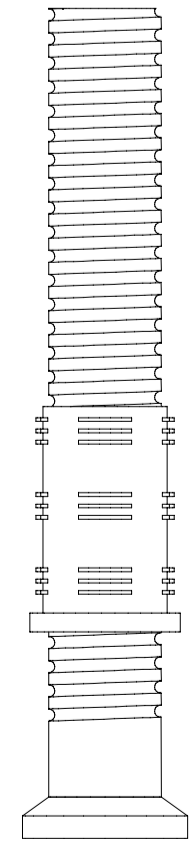


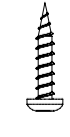
**A** rama stelaża x 1 szt | steel legs x 1 pc



**B** regulator x 2 szt | adjuster x 2 pcs



**C** wkręt x 8 szt | sharp screw x 8 pcs

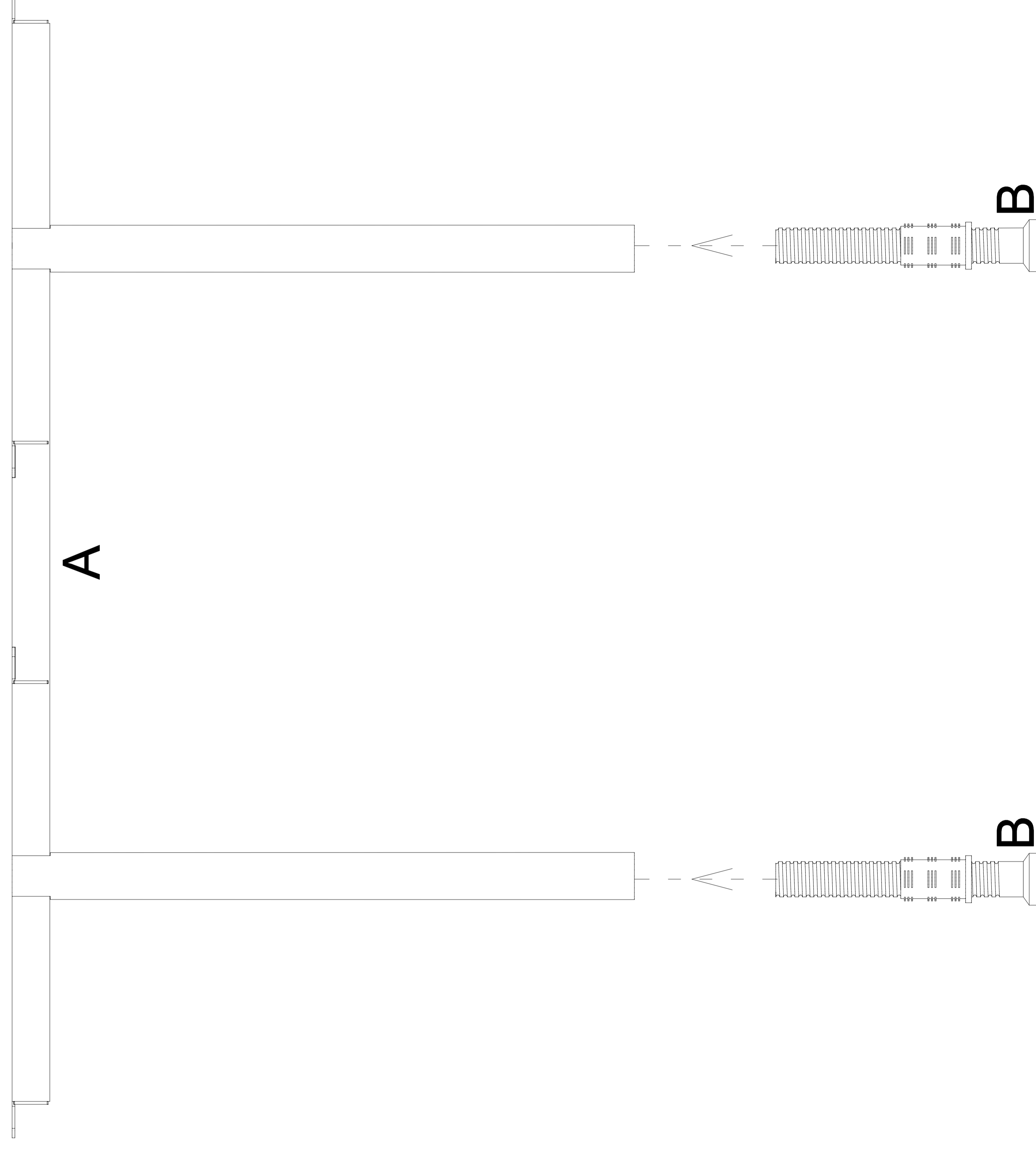


# INSTRUKCJA MONTAŻU | ASSEMBLY INSTRUCTION

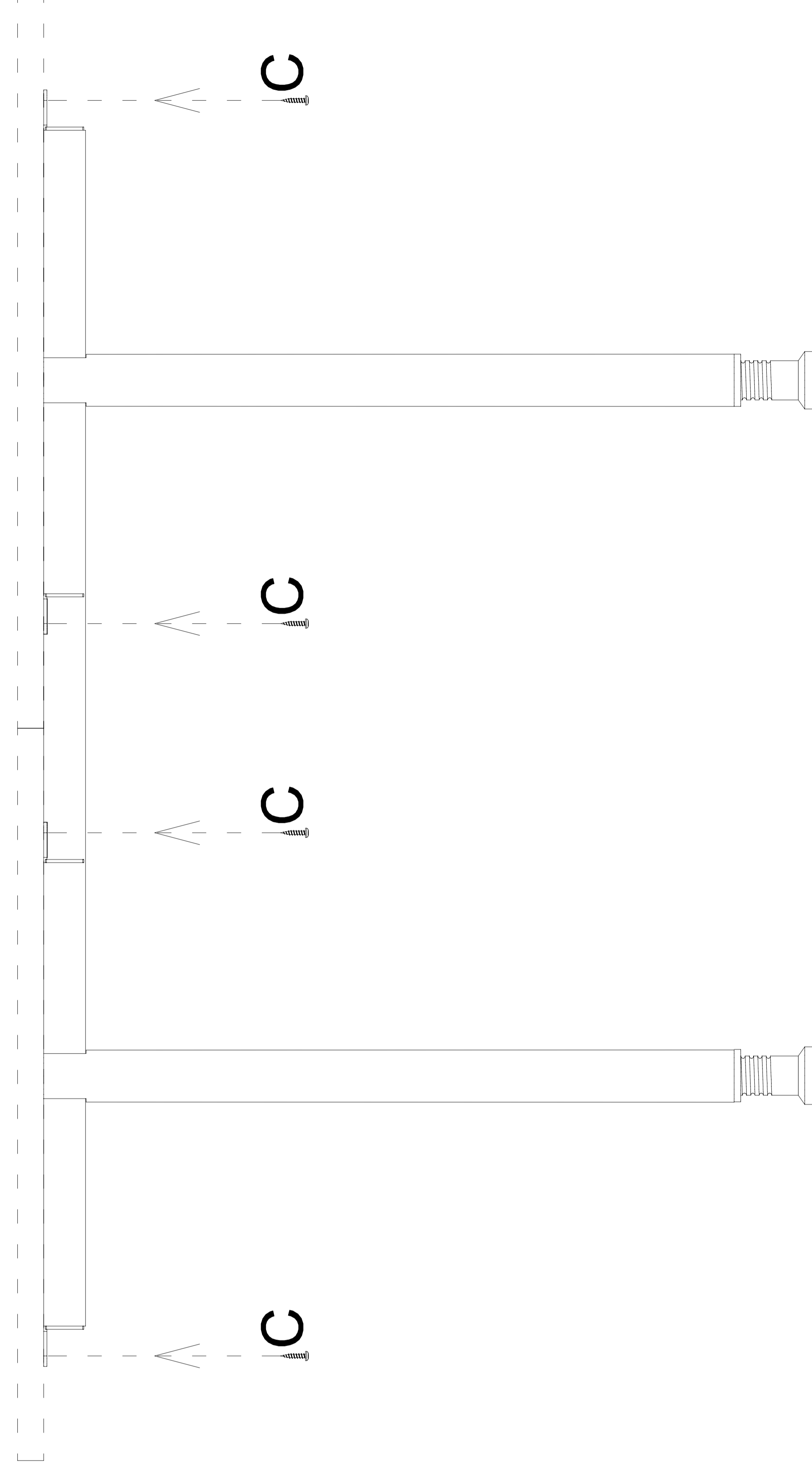
## EC 5014-P, EC 5016-P

2020.07

1



2



potrzebne narzędzia | necessary tools

