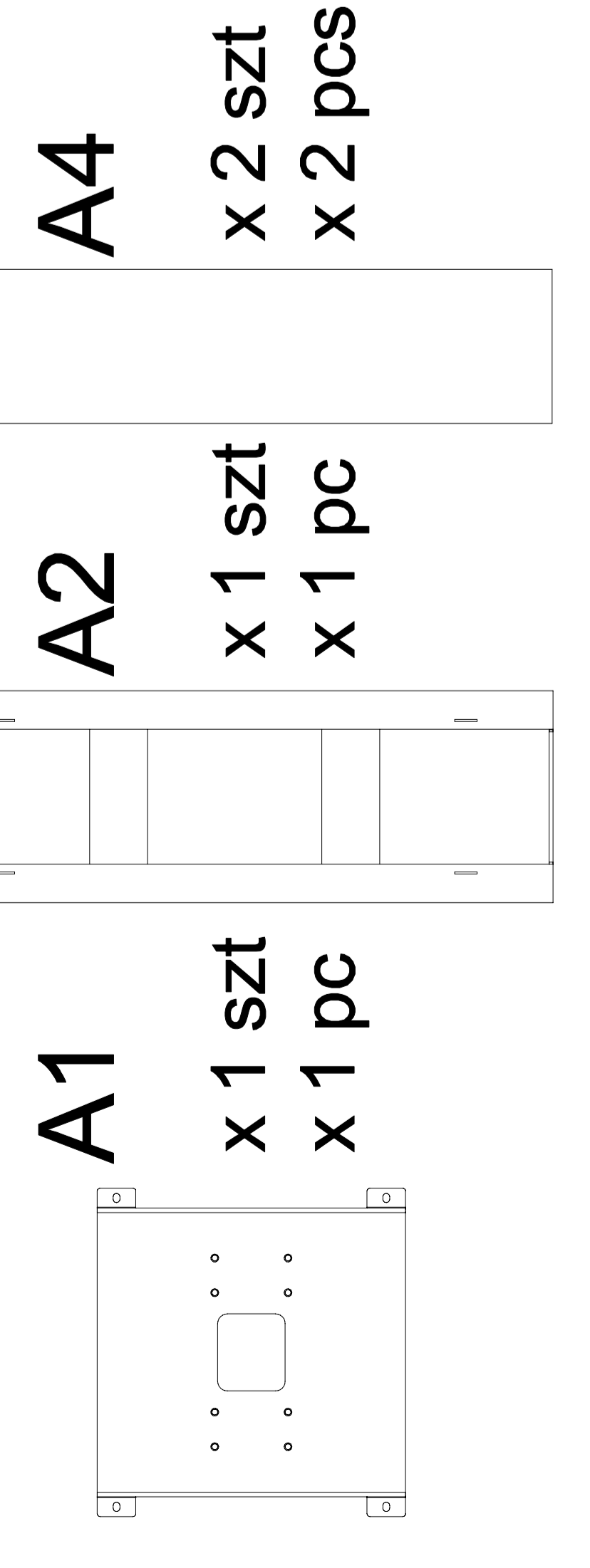


INSTRUKCJA MONTAŻU I ASSEMBLY INSTRUCTION

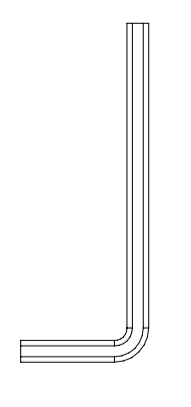
ET 8040SB

2020.09

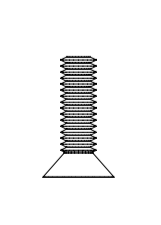
- A** podstawa do blatu na 1 kolumnie
– asymetryczna x 1 szt I tabie base on
1 column – asymmetrical x 1 pc



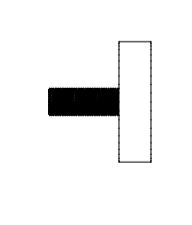
- B** klucz imbusowy x 1 szt I allen key x 1 pc



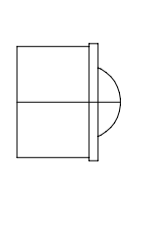
- C** śruba x 16 szt I screw x 16 pcs



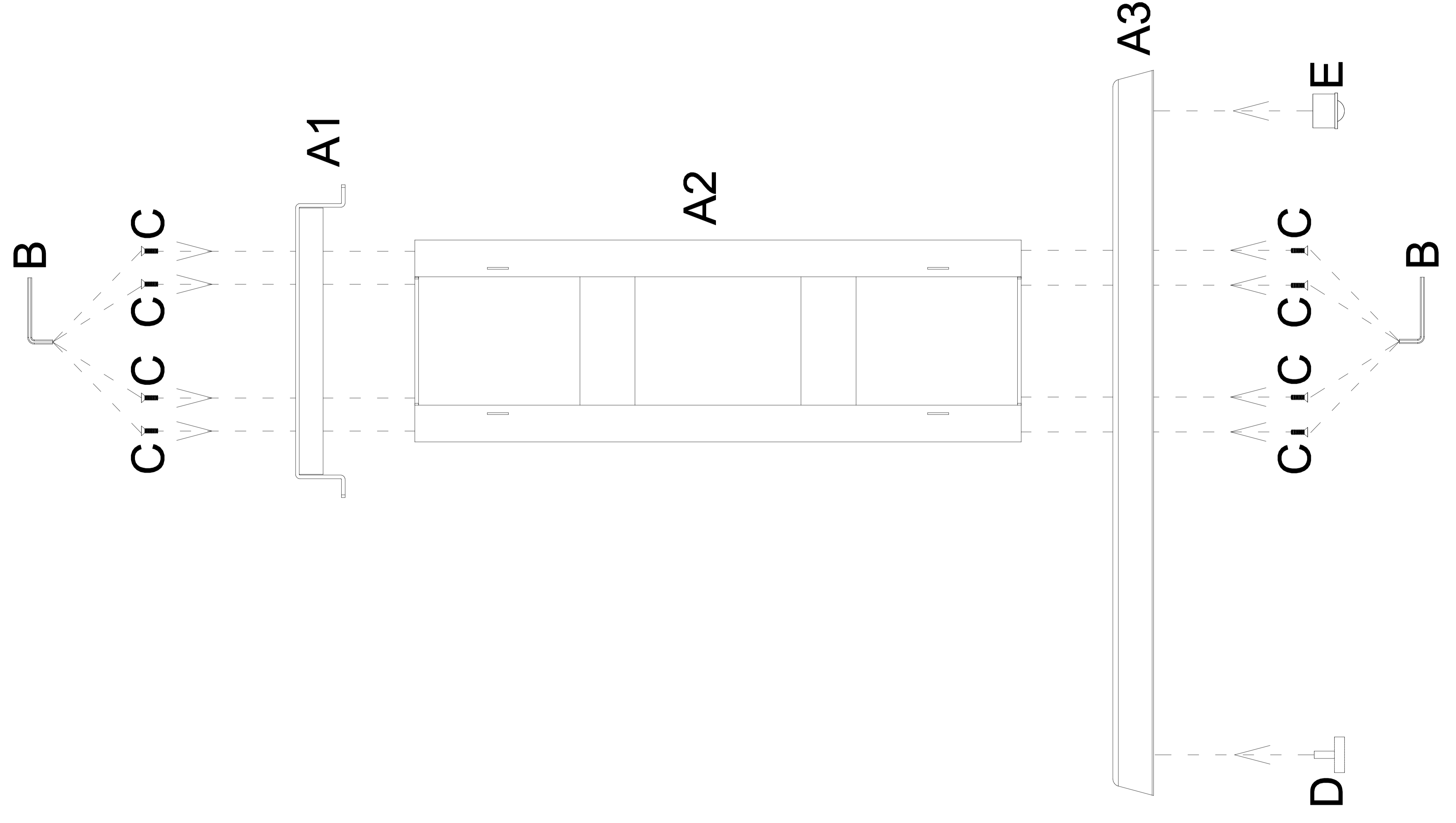
- D** regulator x 2 szt I adjustable feet x 2 pcs



- E** rolka x 2 szt I castor x 2 pcs



1



2

