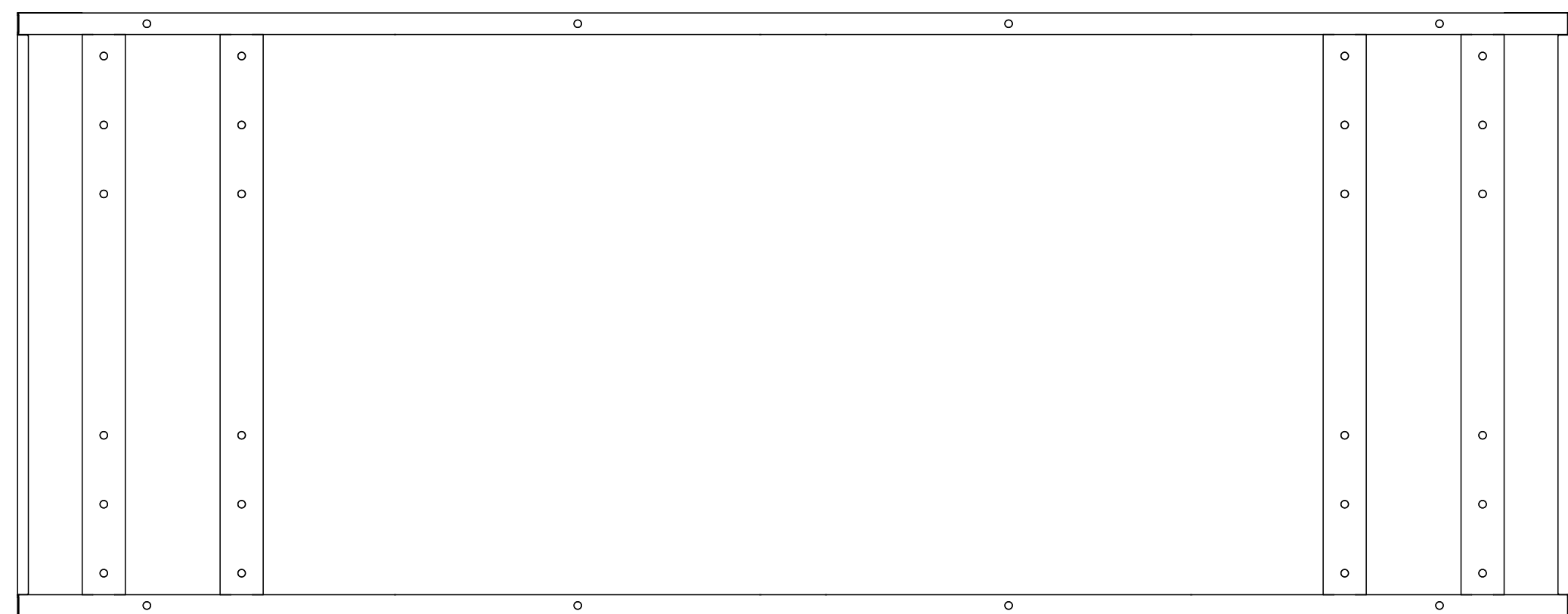


**A** rama do blatu x 1 szt | frame for table x 1 pc



**B** mufa x 8 szt | sleeve x 8 pcs



**C** klucz imbusowy x 1 szt | allen key x 1 pc



**D** śruba x 8 szt | screw x 8 pcs



**E** klucz imbusowy x 1 szt | allen key x 1 pc



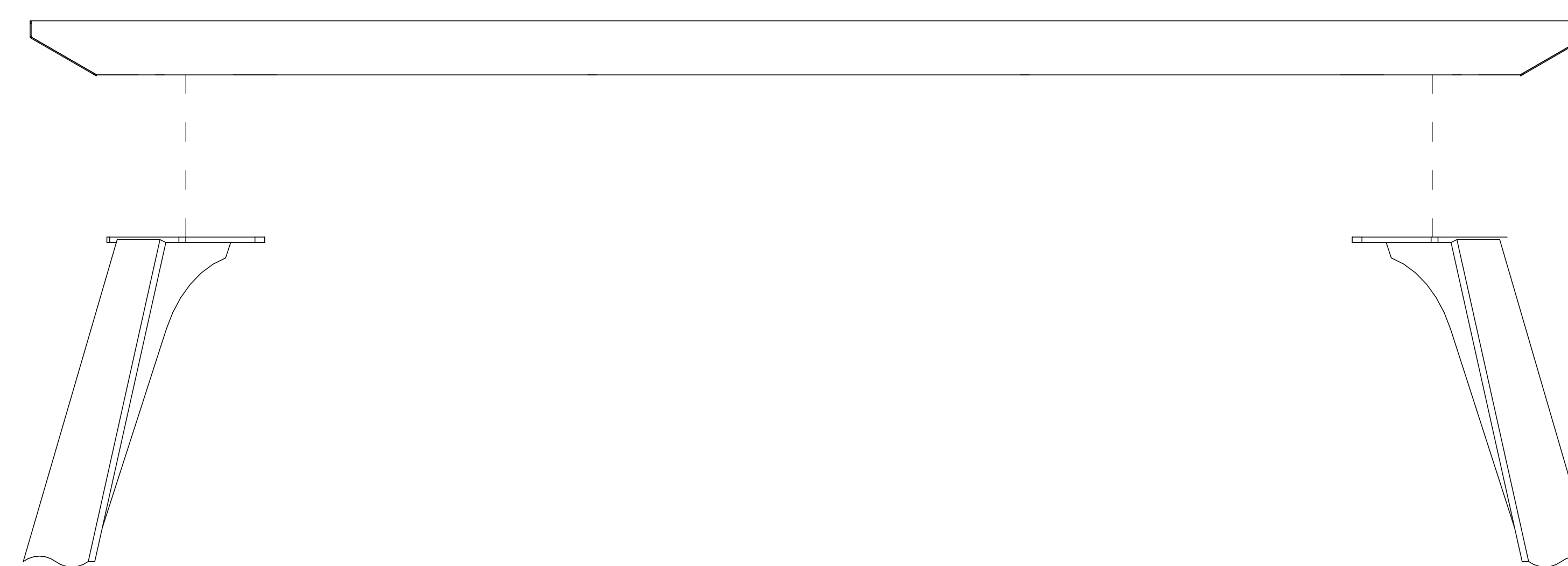
# INSTRUKCJA MONTAŻU | ASSEMBLY INSTRUCTION

## ET R140, ET R160, ET R180

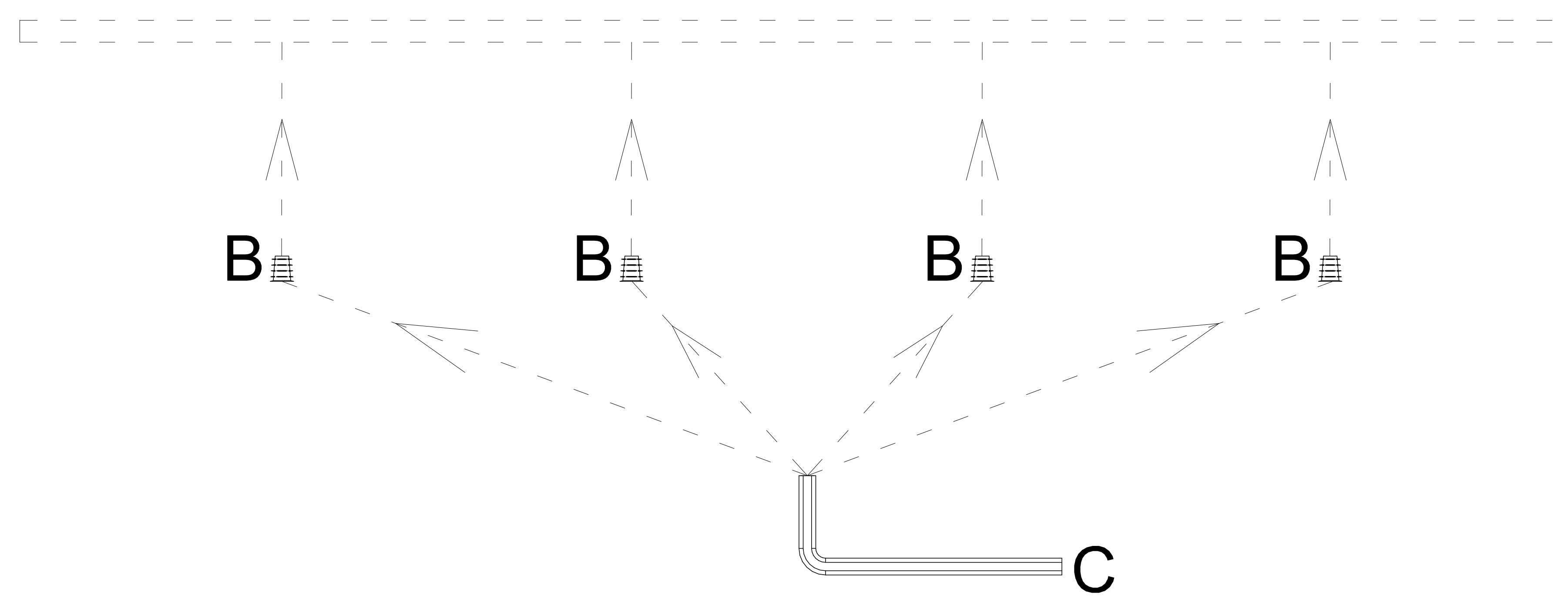
2023.07



1



2



3

