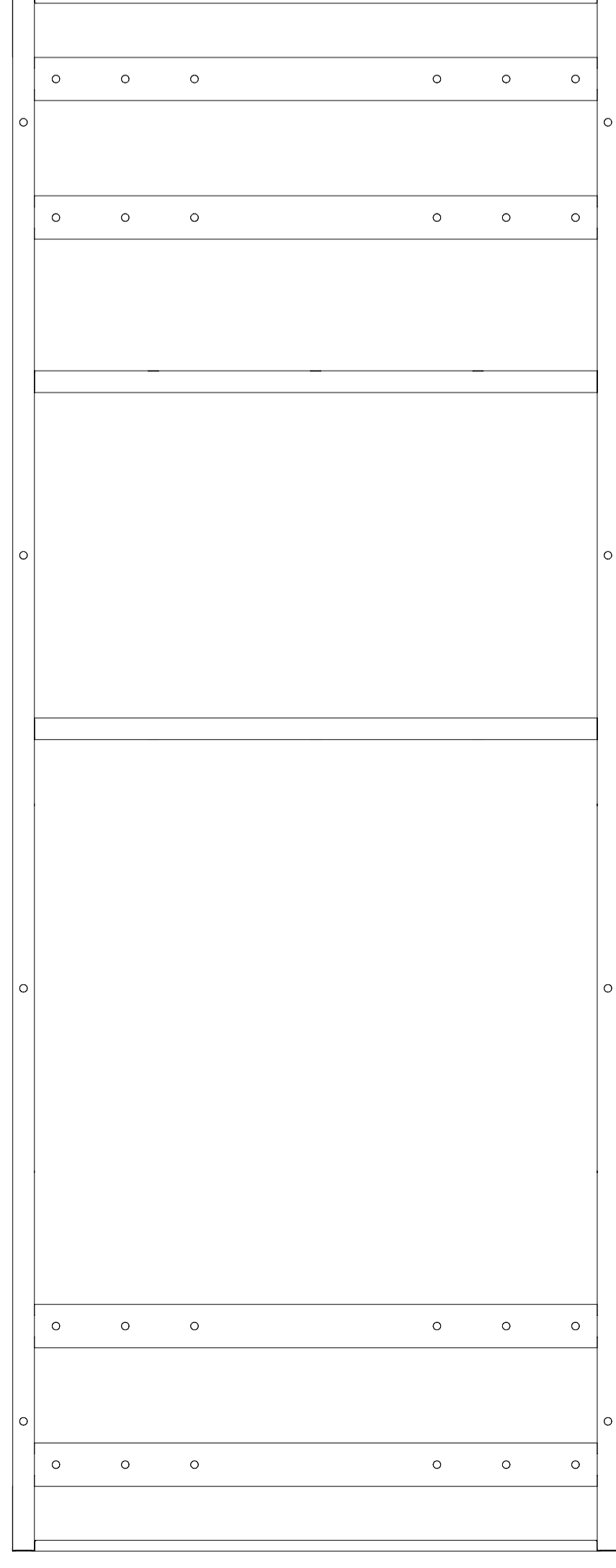


- A** rama do blatu – asymetryczna x 1 szt
I frame for table – asymmetrical x 1 pc

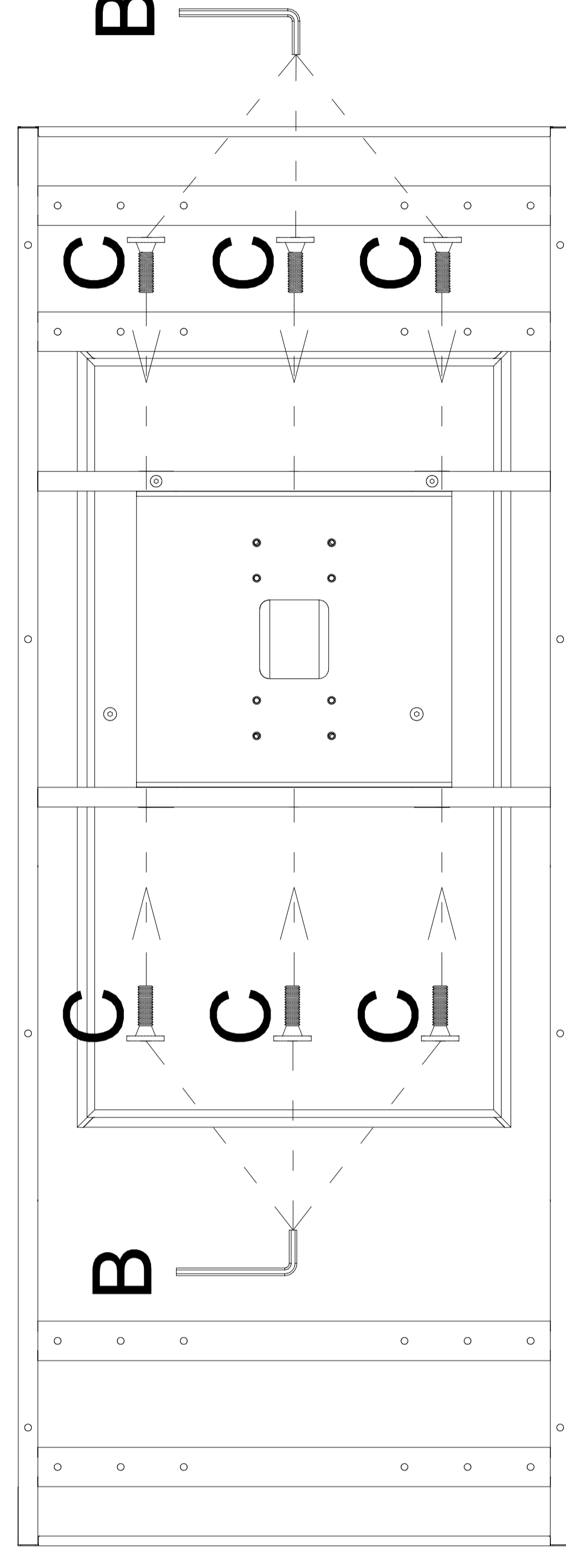


INSTRUKCJA MONTAŻU I ASSEMBLY INSTRUCTION ET R140KB, ET R160KB

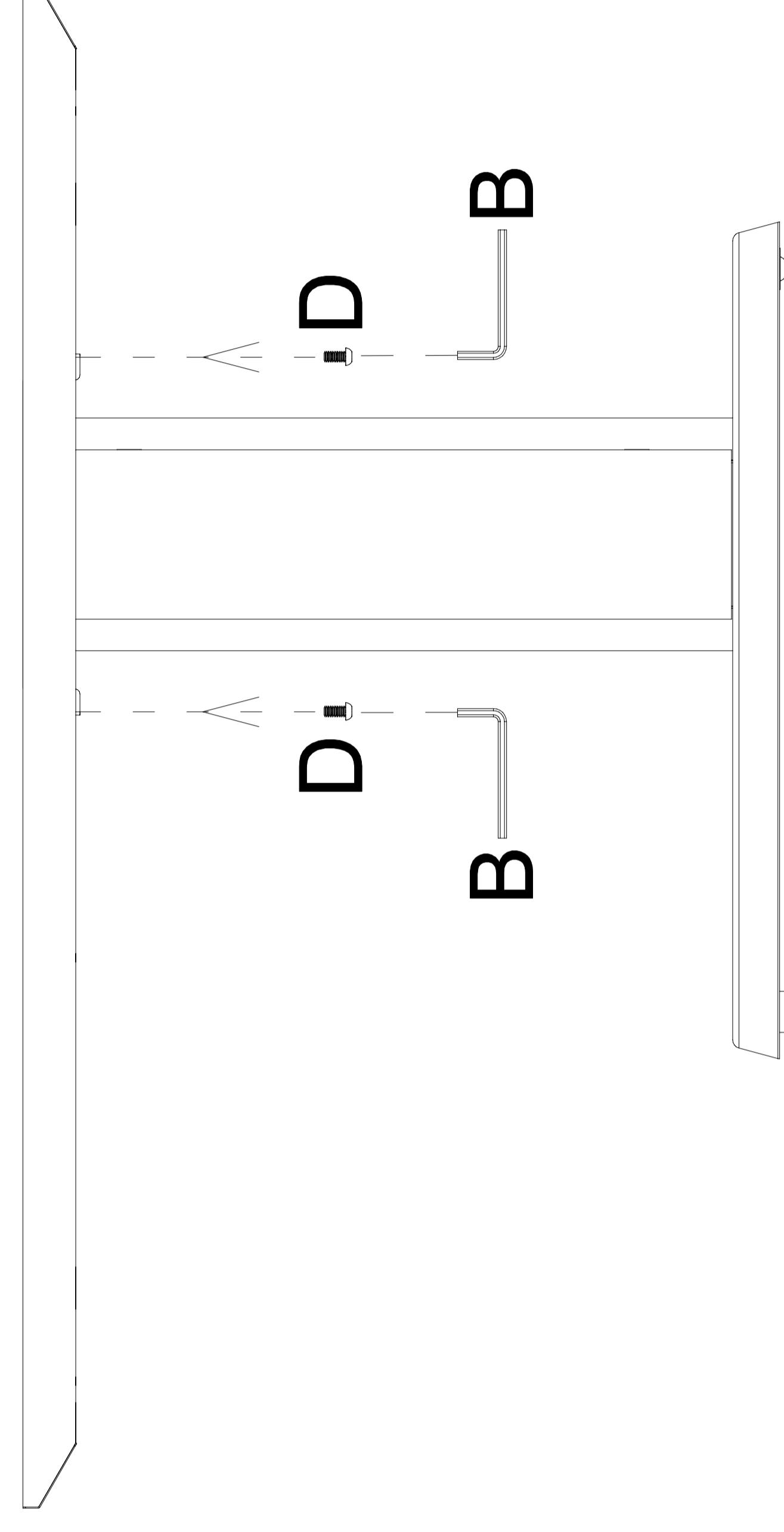
2020.09



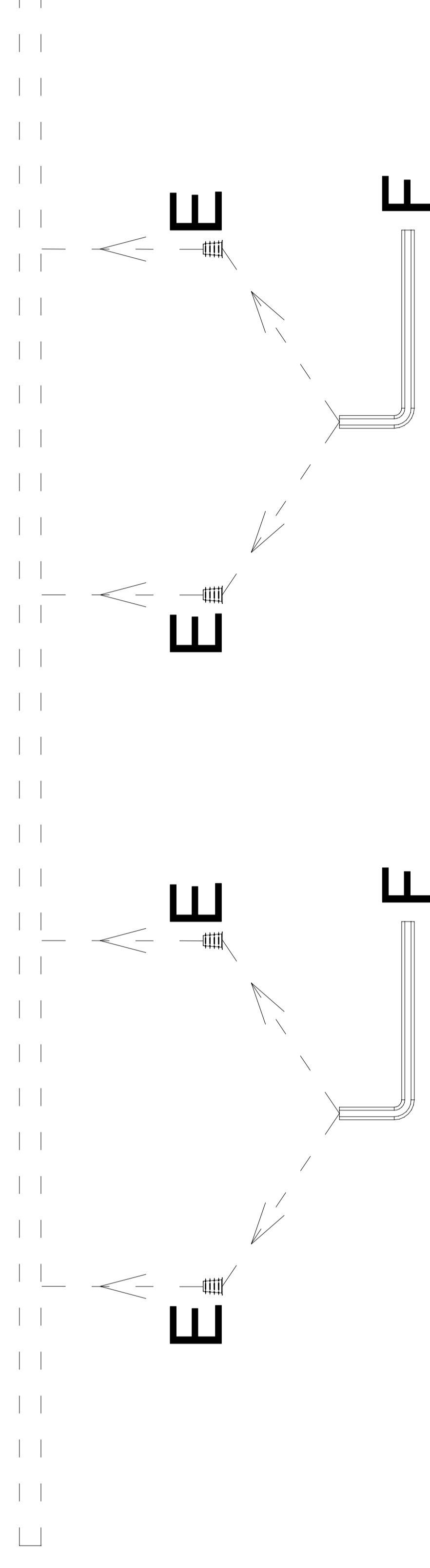
1



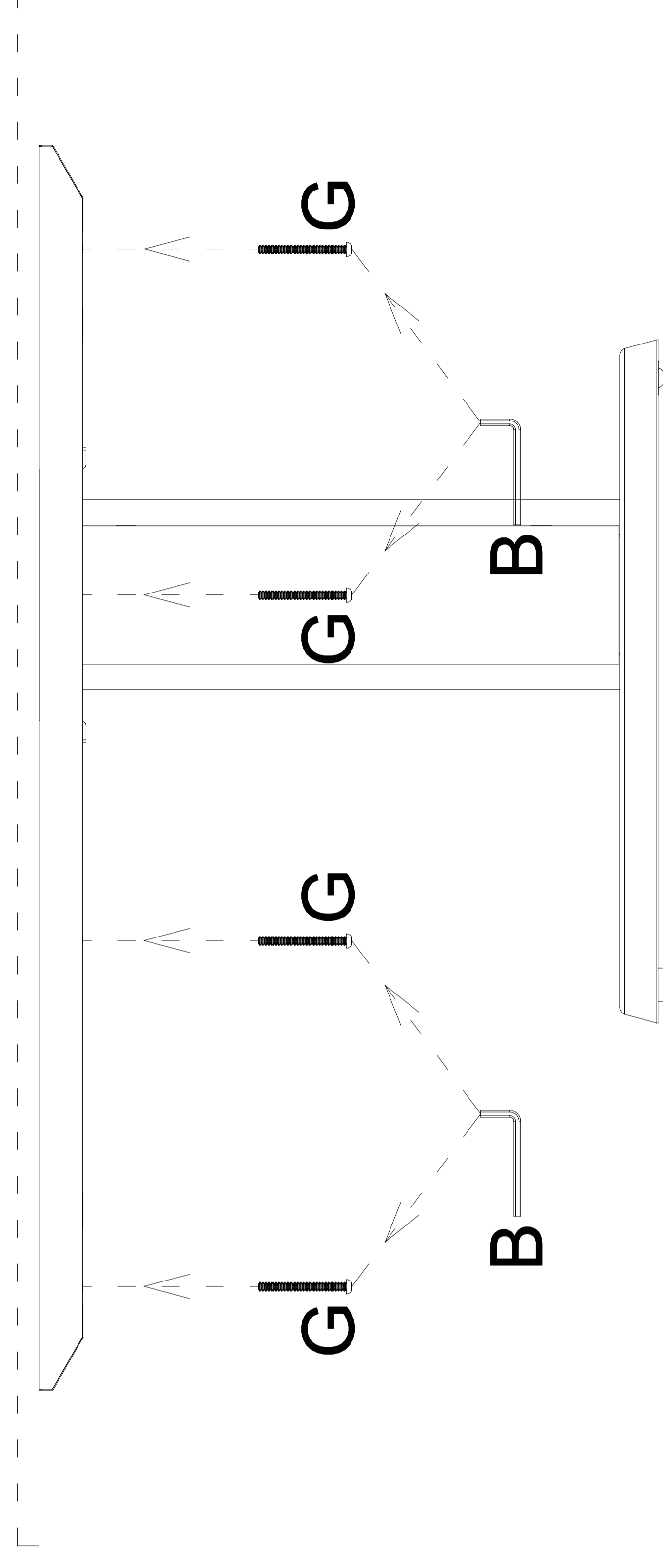
2



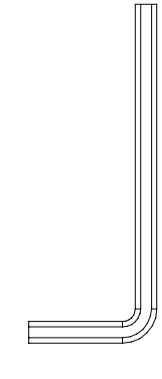
3



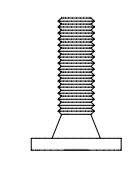
4



- B** klucz imbusowy x 1 szt I allen key x 1 pc



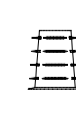
- C** śruba x 6 szt I screw x 6 pcs



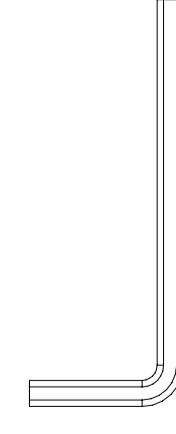
- D** śruba x 4 szt I screw x 4 pcs



- E** mufa x 8 szt I sleeve x 8 pcs



- F** klucz imbusowy x 1 szt I allen key x 1 pc



- G** śruba x 8 szt I screw x 8 pcs

