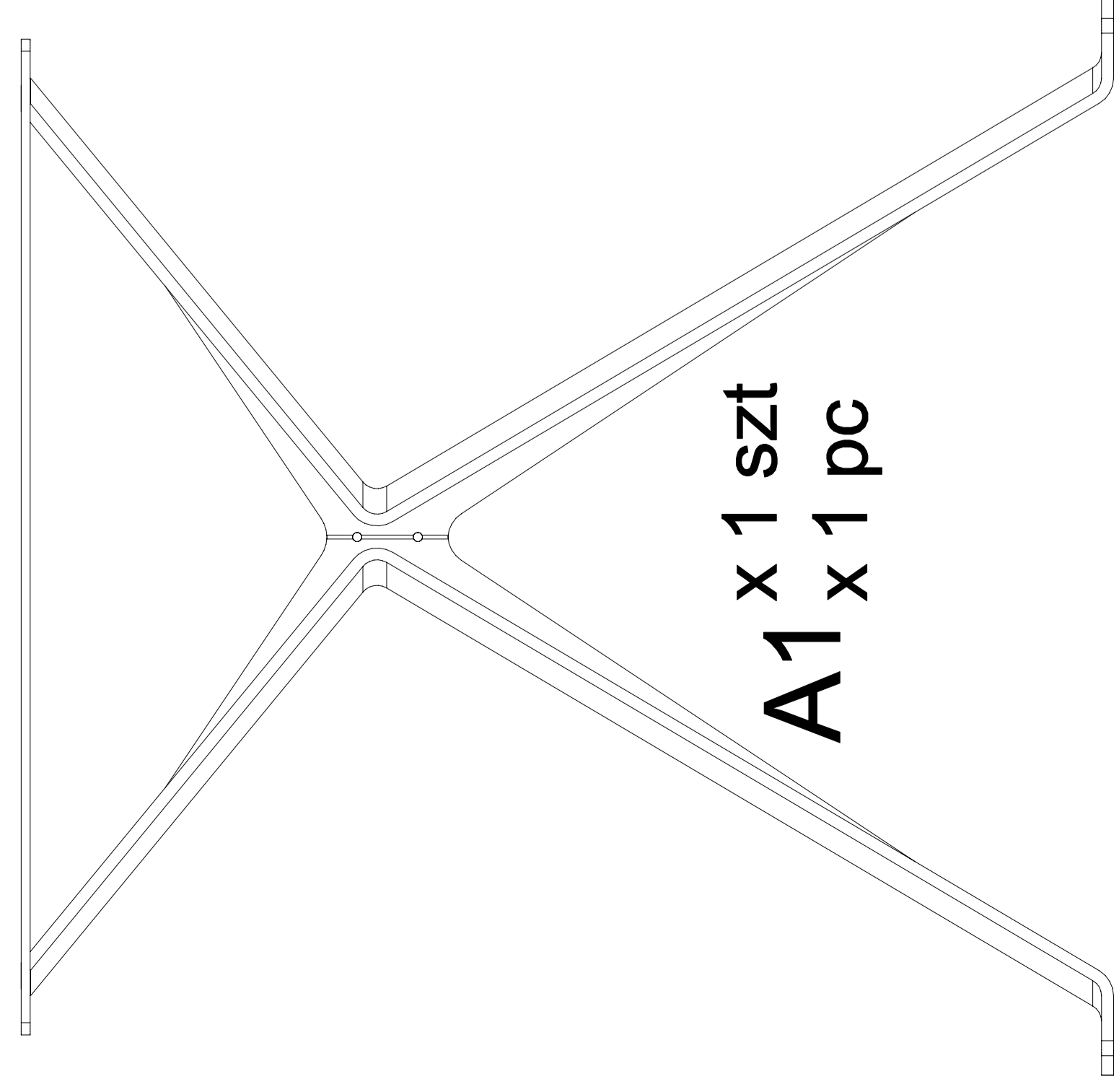


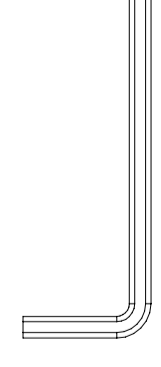
- A** podwójna noga do blatu x 1 szt | double leg
for table x 1 pc



A2
x 1 szt
x 1 pc

A1
x 1 szt
x 1 pc

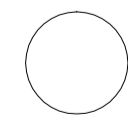
- B** klucz imbusowy x 1 szt | allen key x 1 pc



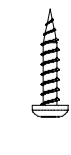
- C** śruba x 2 szt | screw x 2 pcs



- D** podkładka filcowa x 2 szt | felt pad x 2 pcs



- E** wkręt x 13 szt | sharp screw x 13 pcs



potrzebne narzędzia | necessary tools

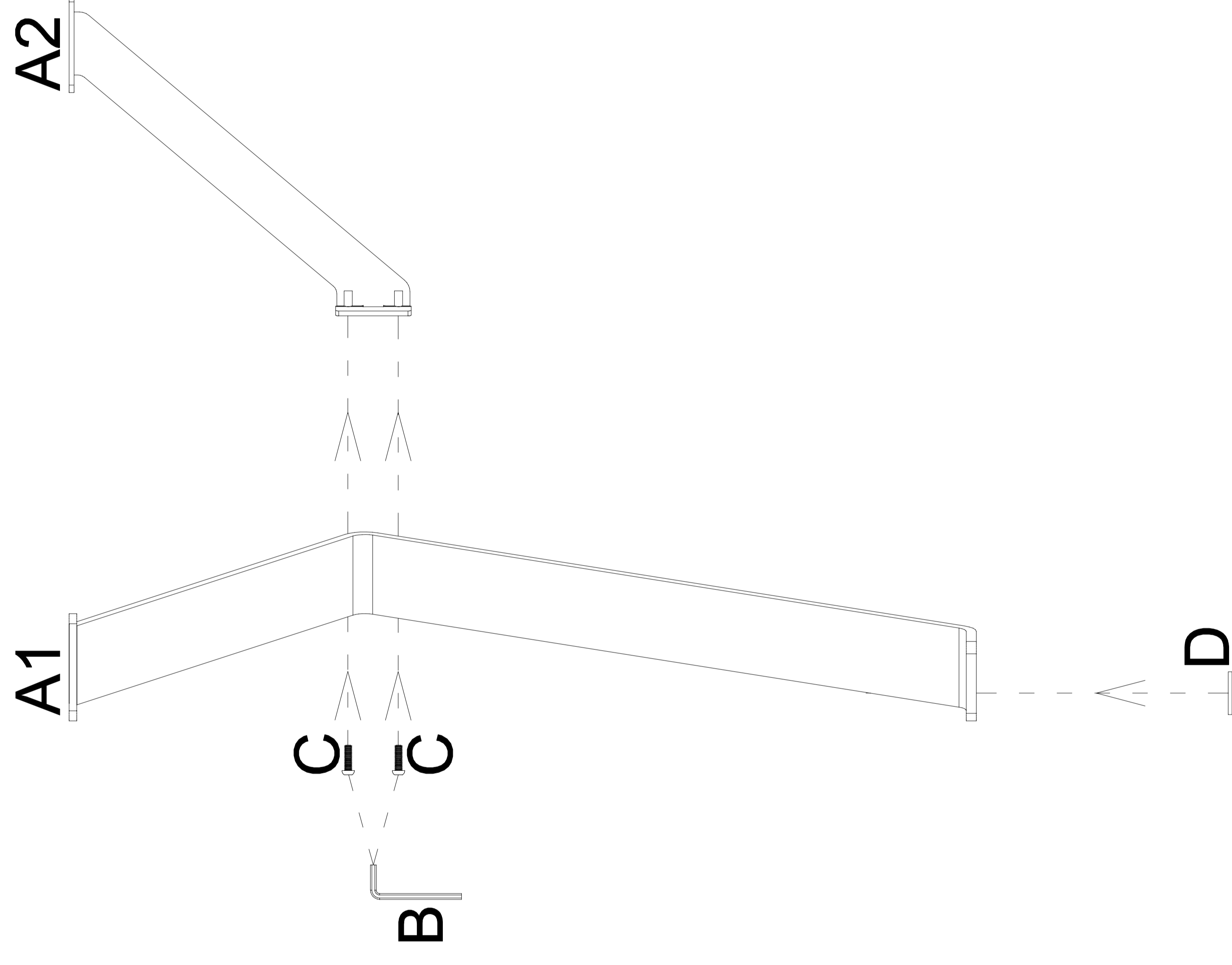


INSTRUKCJA MONTAŻU | ASSEMBLY INSTRUCTION

EX 72080

2023.02

1



2

