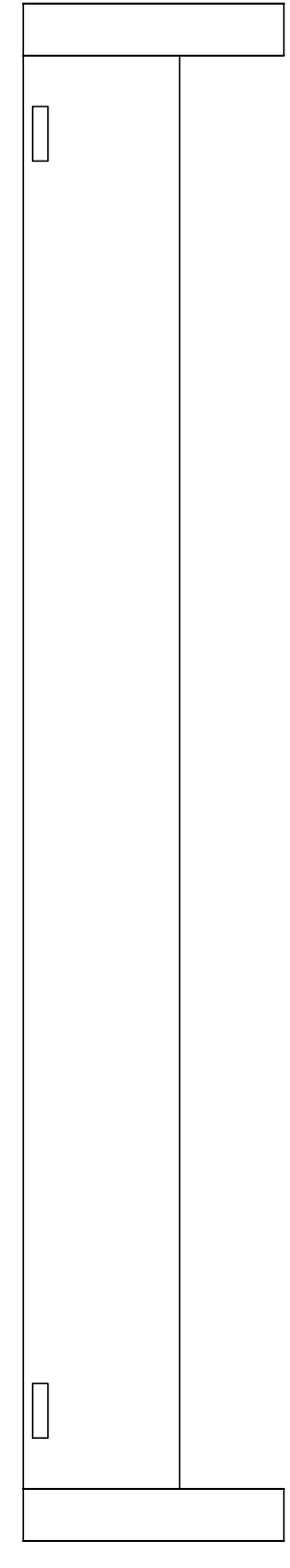


- A** stelaż podpierający x 1 szt | supporting steel leg x 1 pc



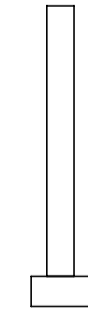
- B** płytka x 2 szt | plate x 2 pcs



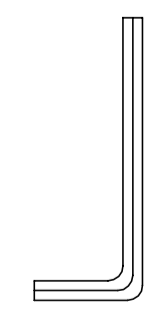
- C** wkręt x 4 szt | sharp screw x 4 pcs



- D** śruba x 2 szt | screw x 2 pcs



- E** klucz imbusowy x 1 szt | allen key x 1 pc



potrzebne narzędzia | necessary tools

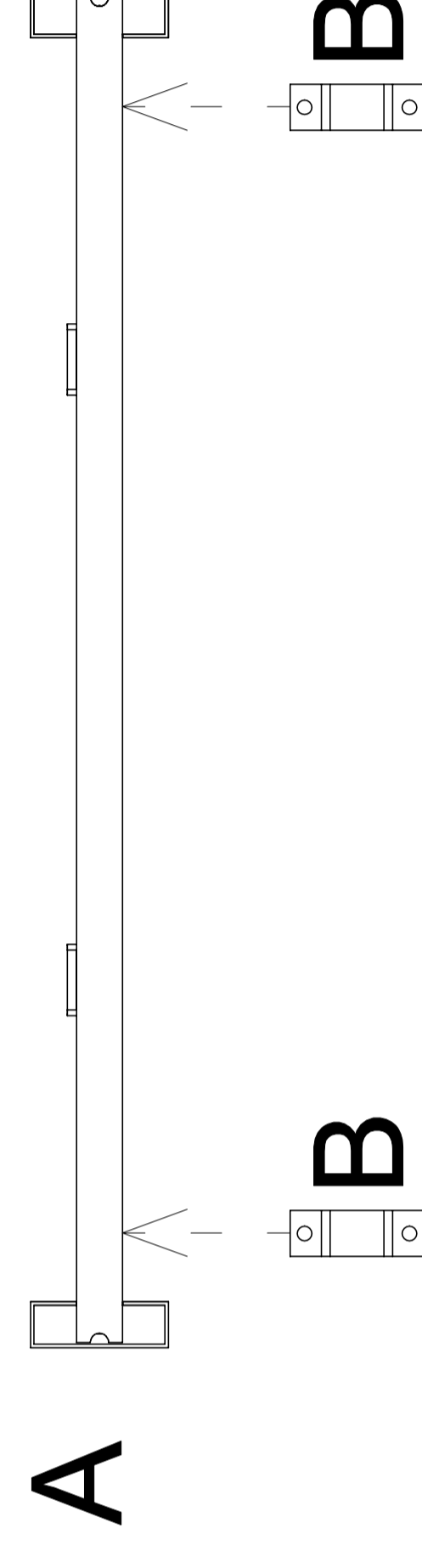


INSTRUKCJA MONTAŻU I ASSEMBLY INSTRUCTION

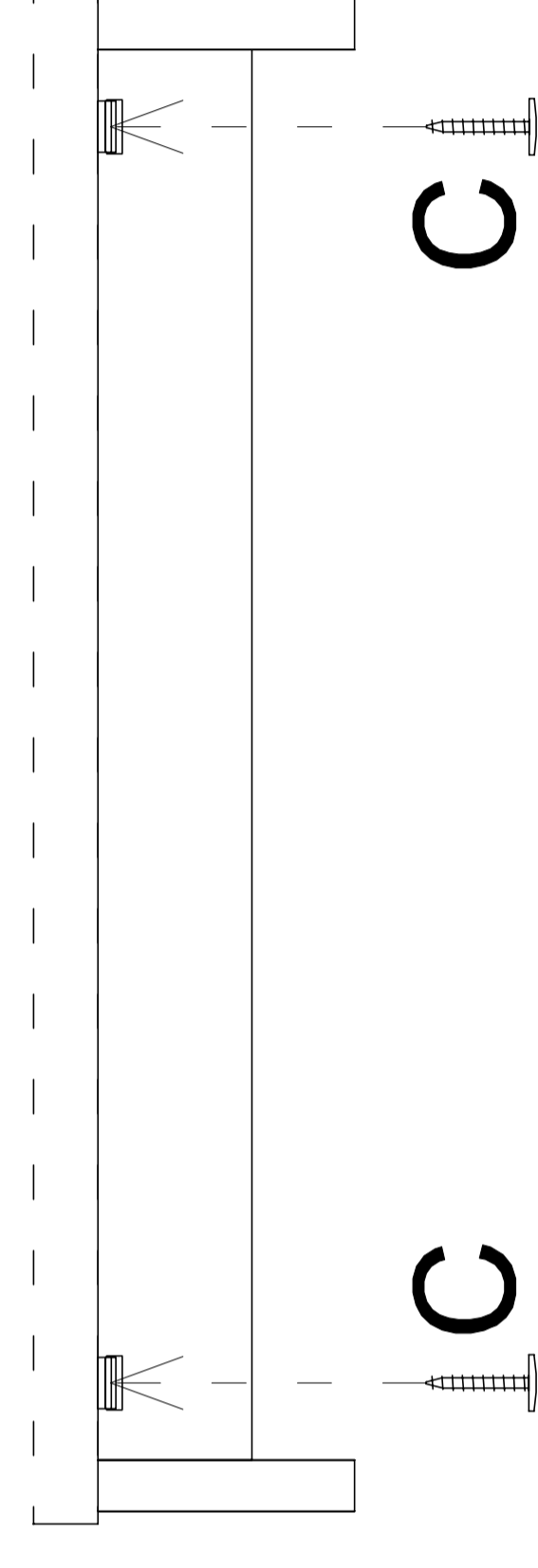
M 6206-K, M 6207-K, M 6208-K

2019.05

1



2



3

