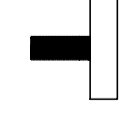


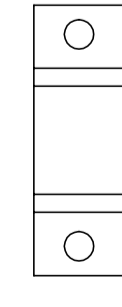
A rama stelaża x 2 szt | steel legs x 2 pcs



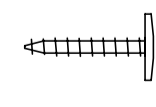
B regulator x 4 szt | adjustable feet x 4 pcs



C płytki x 4 szt | plate x 4 pcs



D wkręt x 8 szt | sharp screw x 8 pcs



potrzebne narzędzia | necessary tools

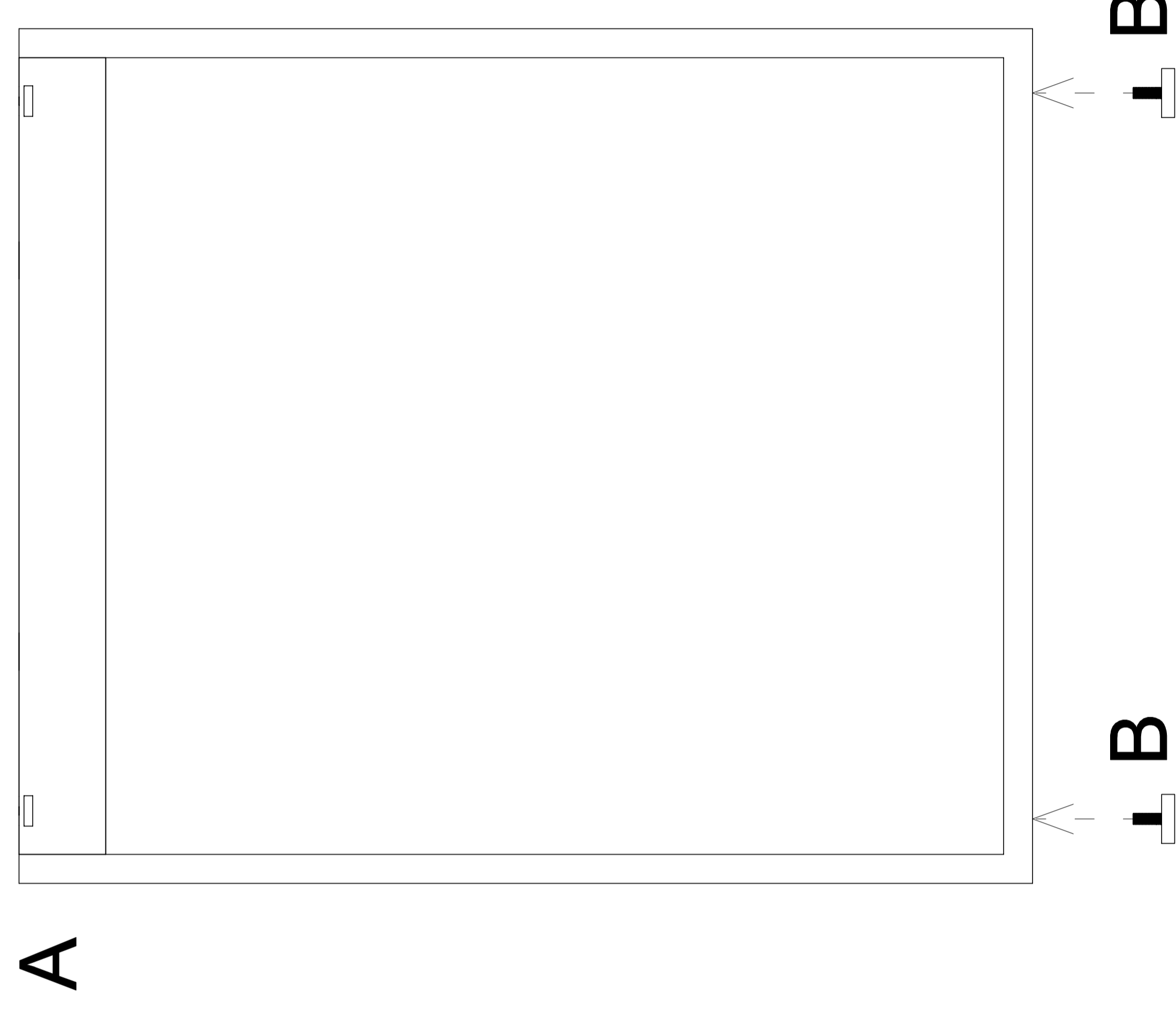


INSTRUKCJA MONTAŻU I ASSEMBLY INSTRUCTION

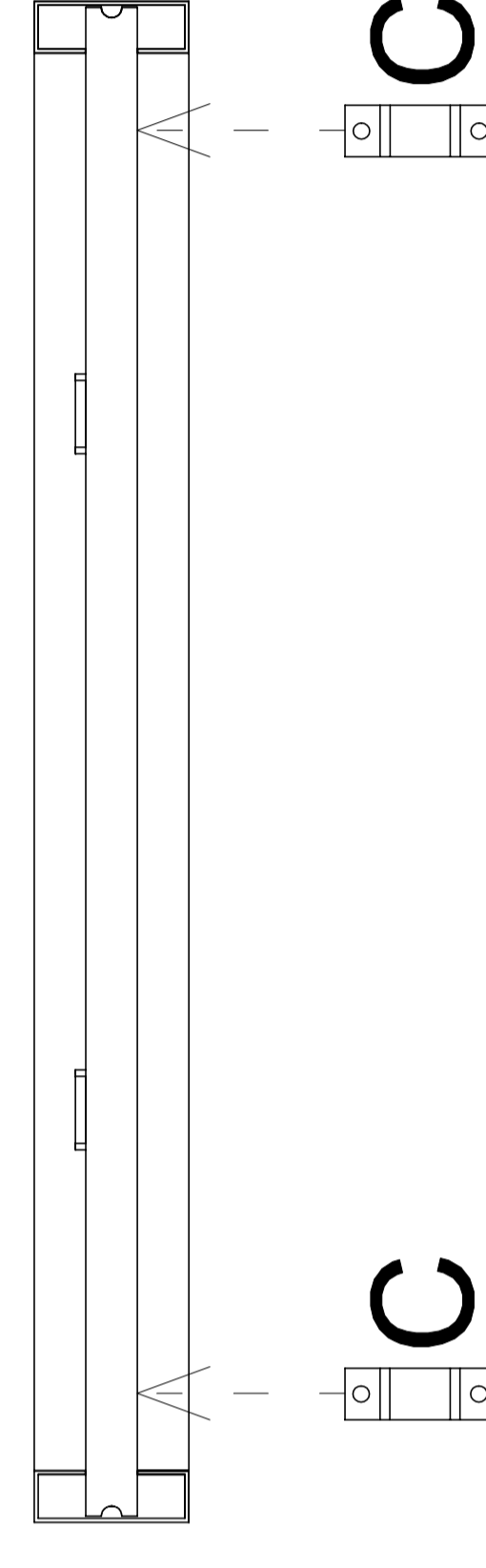
M 6206-Z, M 6207-Z, M 6208-Z

2019.05

1



2



3

