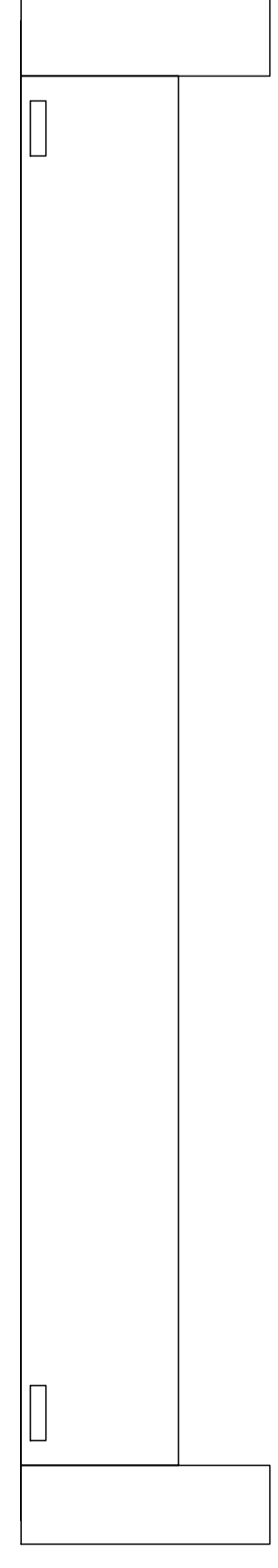
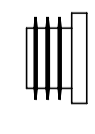


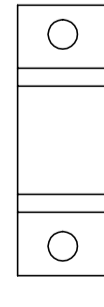
- A** stelaż podpierający x 1 szt | supporting steel leg x 1 pc



- B** zaślepka x 2 szt | end plug x 2 pcs



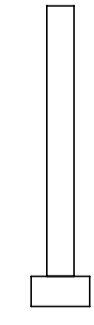
- C** płytka x 2 szt | plate x 2 pcs



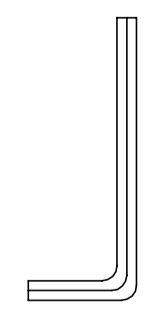
- D** wkręt x 4 szt | sharp screw x 4 pcs



- E** śruba x 2 szt | screw x 2 pcs



- F** klucz imbusowy x 1 szt | allen key x 1 pc



potrzebne narzędzia | necessary tools

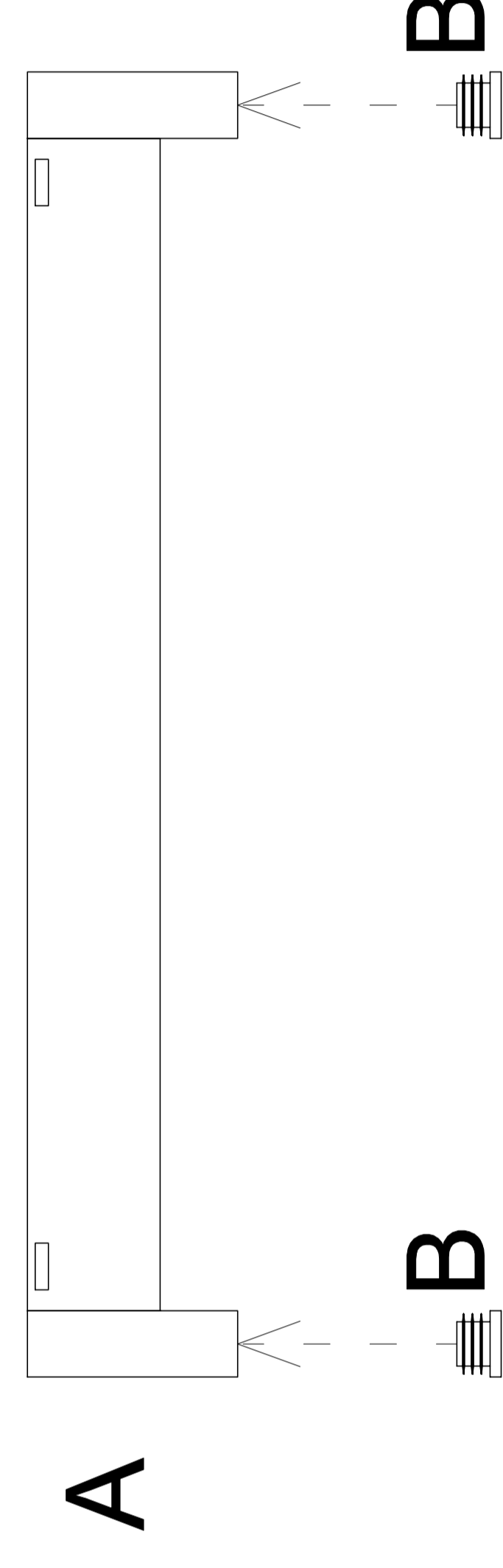


INSTRUKCJA MONTAŻU I ASSEMBLY INSTRUCTION

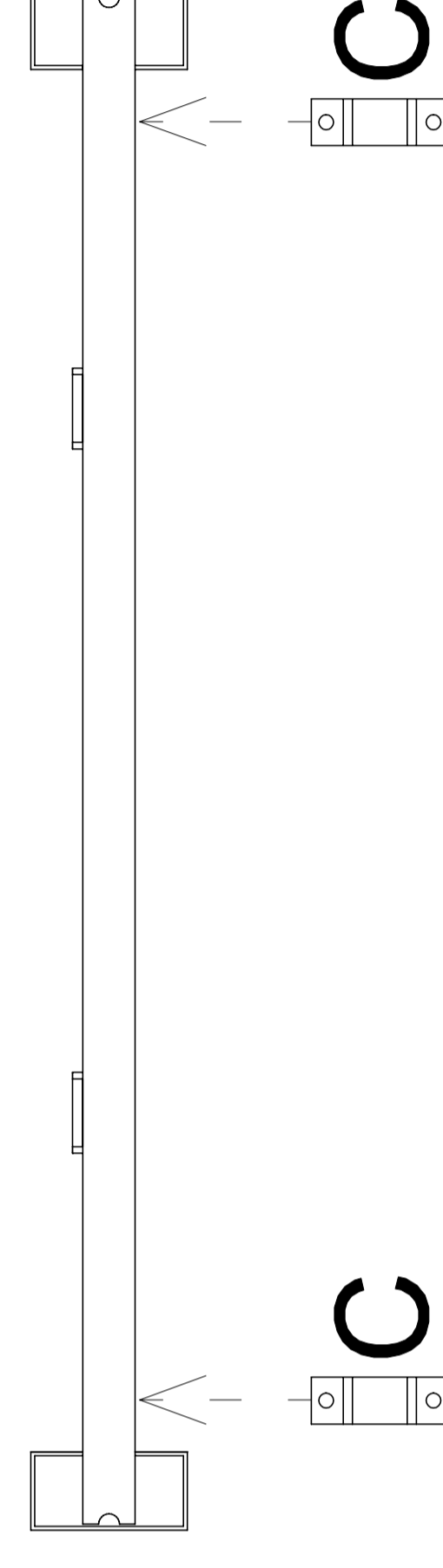
M 6306-K, M 6307-K, M 6308-K

2019.05

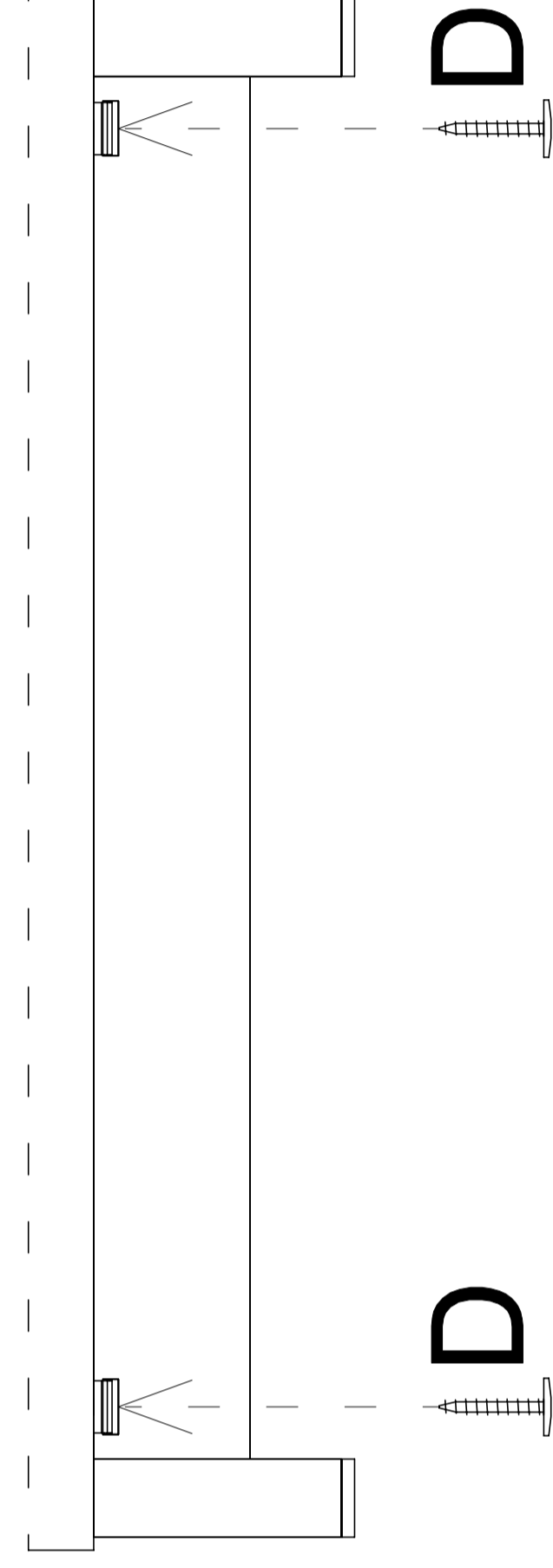
1



2



3



4

