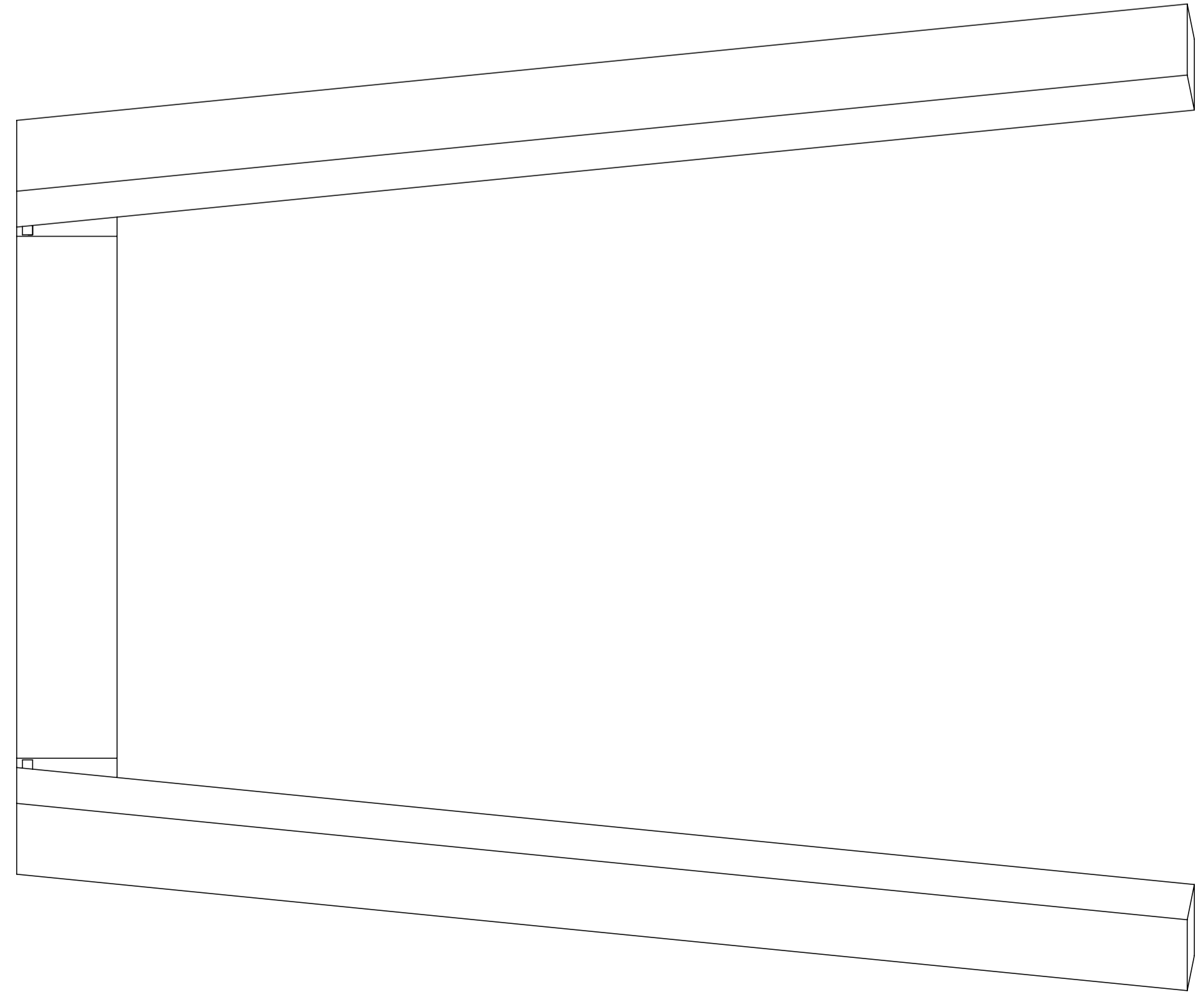
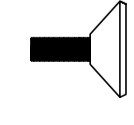


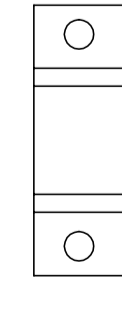
**A** rama stelaża x 2 szt | steel legs x 2 pcs



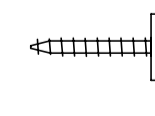
**B** regulator x 4 szt | adjustable feet x 4 pcs



**C** płytka x 4 szt | plate x 4 pcs



**D** wkręt x 8 szt | sharp screw x 8 pcs



potrzebne narzędzia | necessary tools

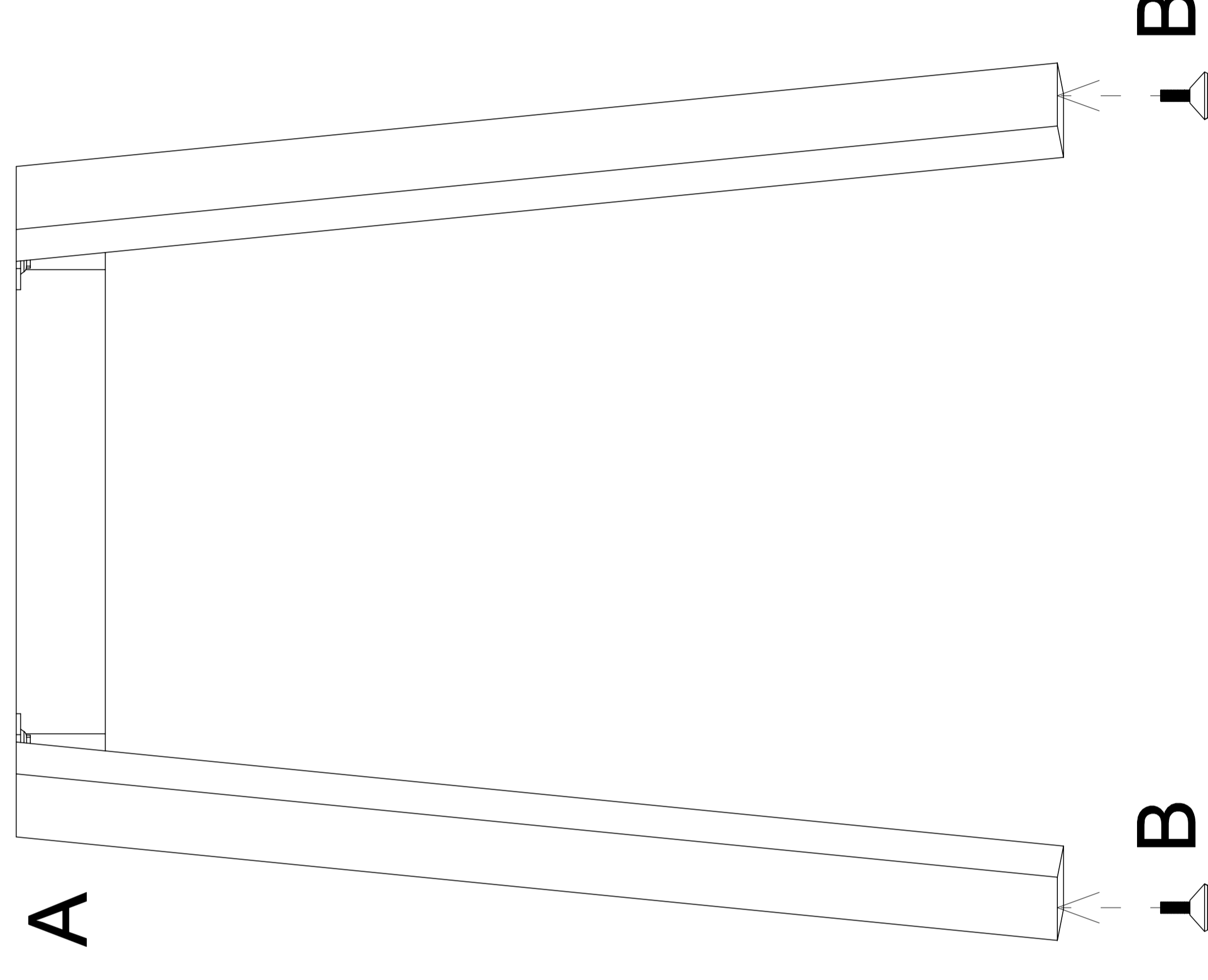


# INSTRUKCJA MONTAŻU I ASSEMBLY INSTRUCTION

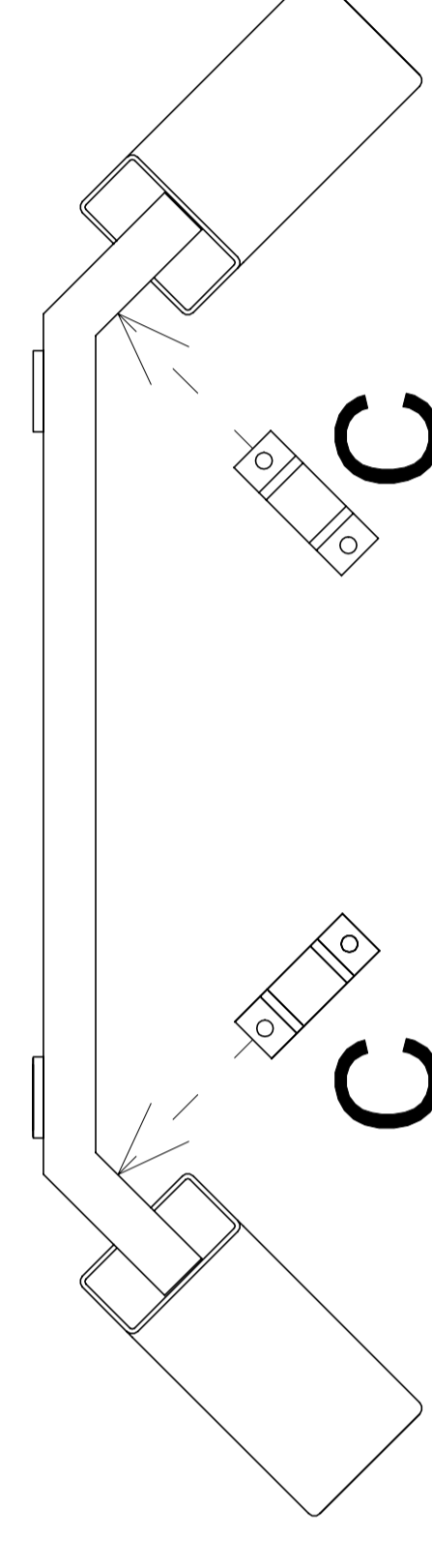
## M 6306-SL, M 6307-SL, M 6308-SL

2019.05

1



2



3

