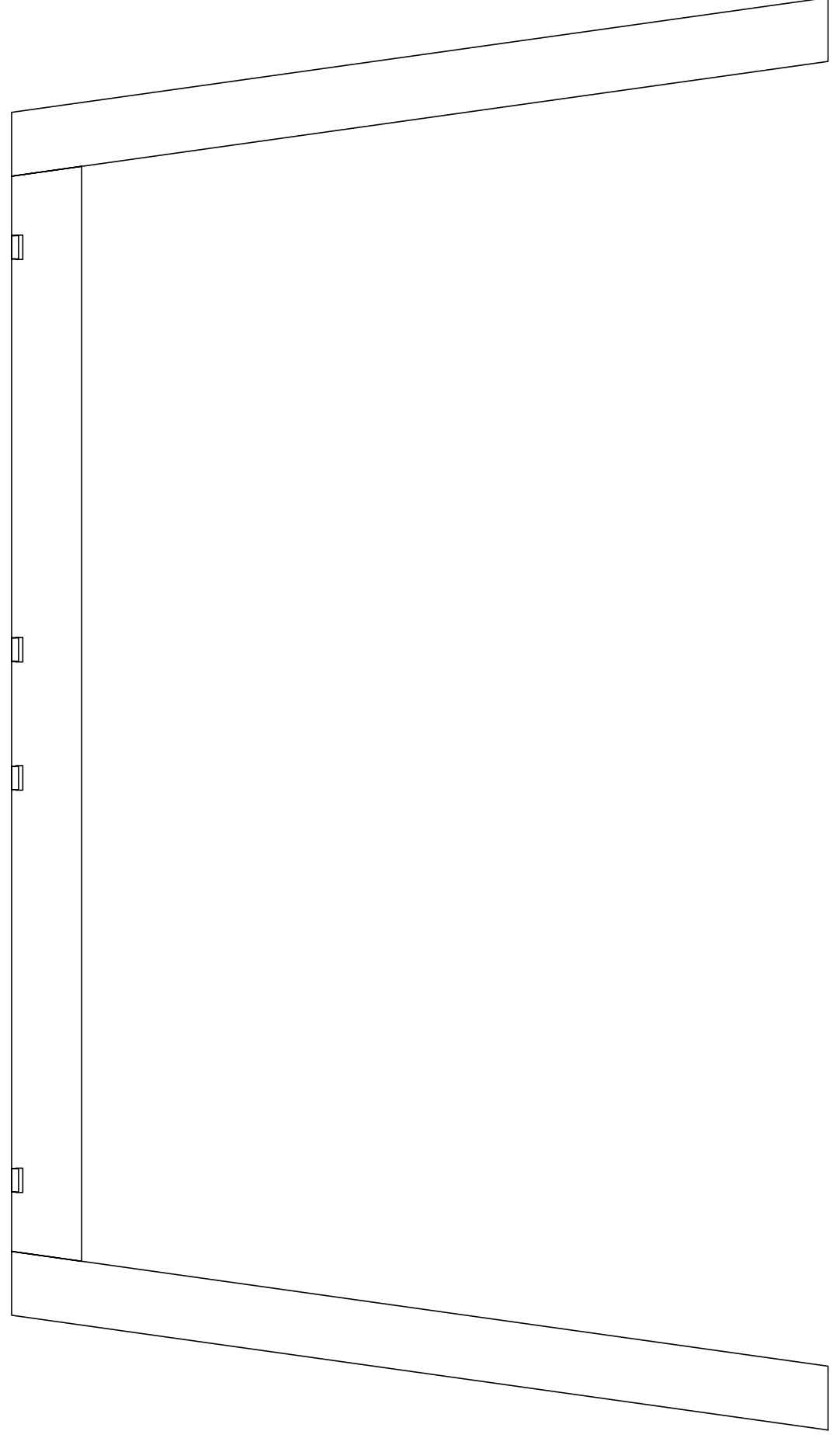
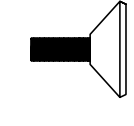


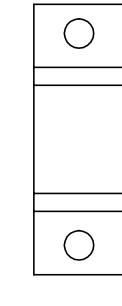
A rama stelaża x 2 szt | steel legs x 2 pcs



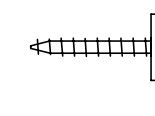
B regulator x 4 szt | adjustable feet x 4 pcs



C płytki x 8 szt | plates x 8 pcs



D wkręt x 16 szt | sharp screws x 16 pcs



potrzebne narzędzia | necessary tools

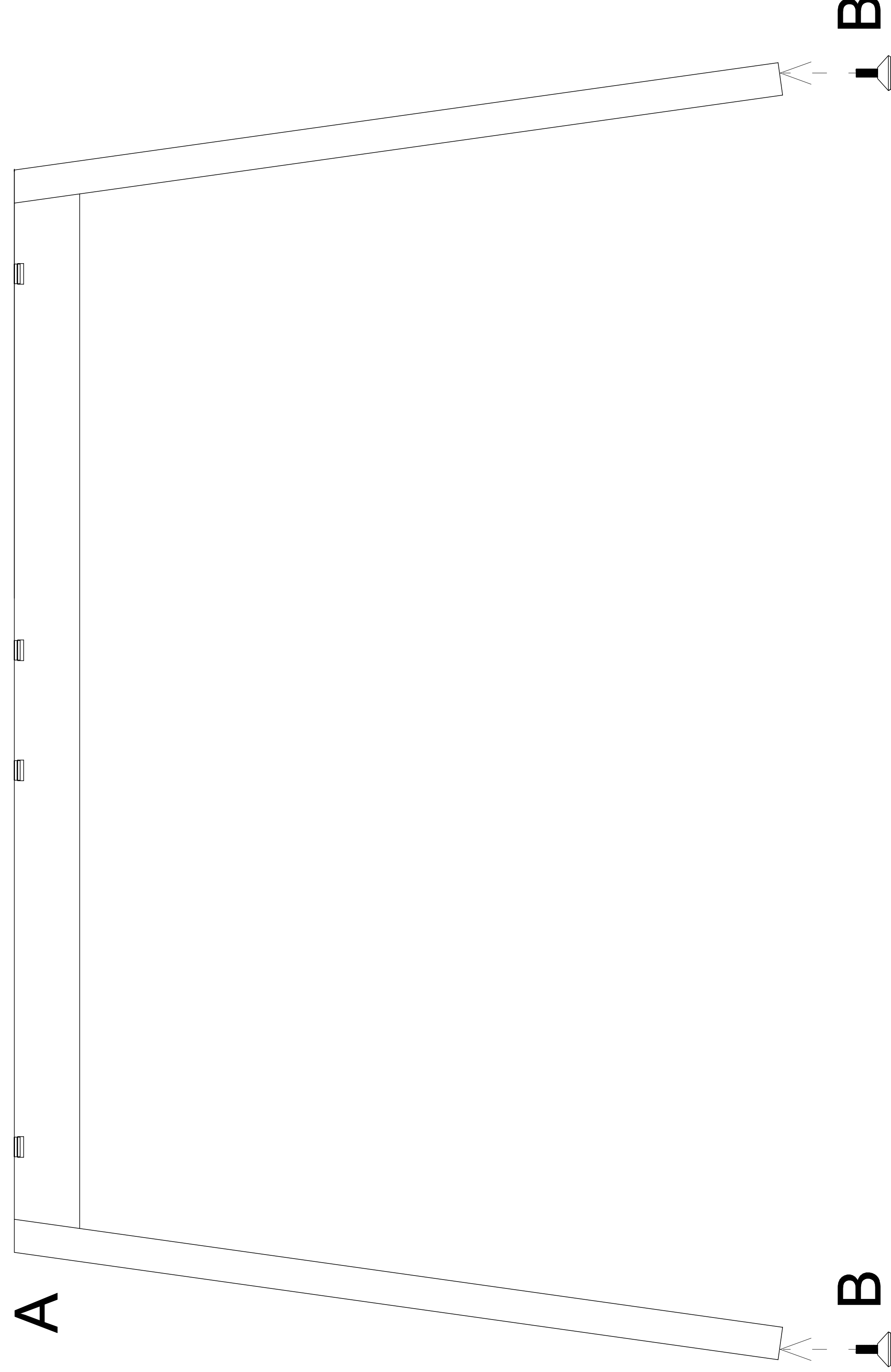


INSTRUKCJA MONTAŻU | ASSEMBLY INSTRUCTION

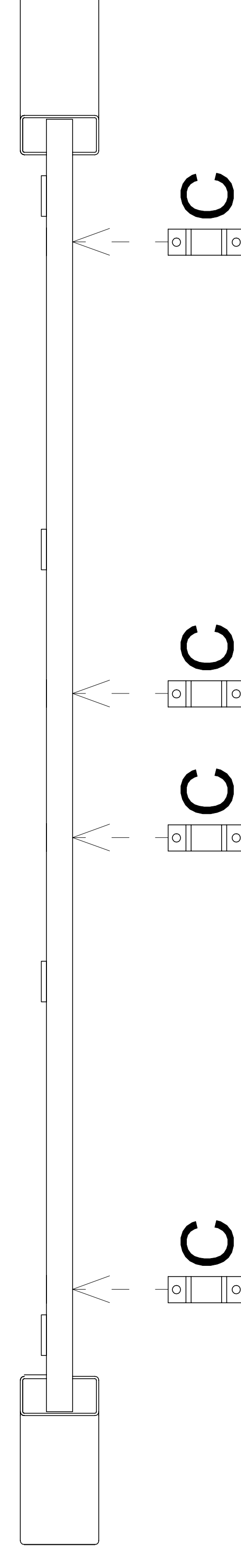
M 6312-S, M 6314-S, M 6316-S

2019.05

1



2



3

