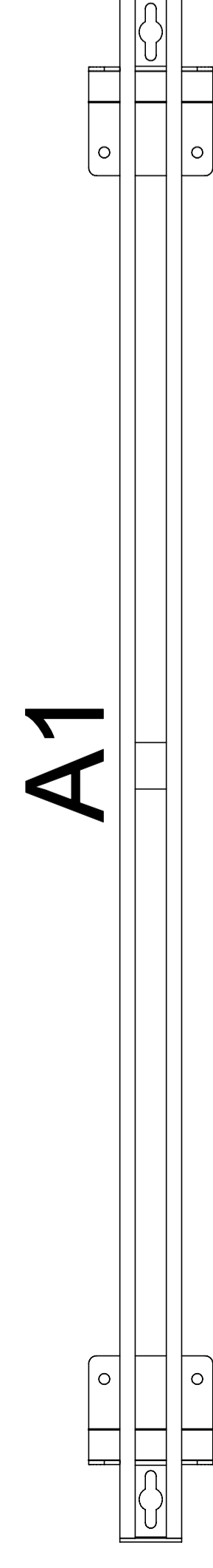


INSTRUKCJA MONTAŻU I ASSEMBLY INSTRUCTION

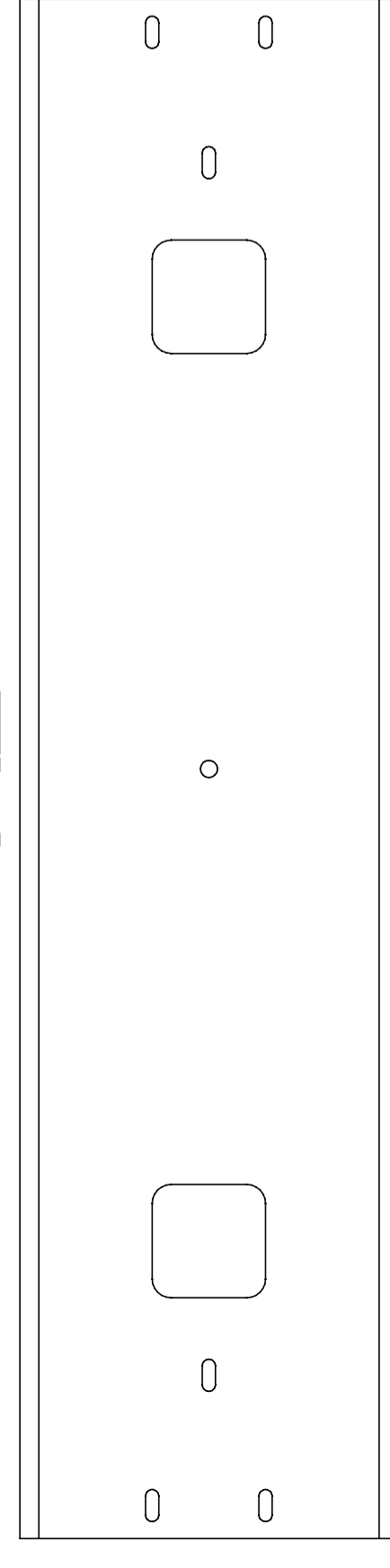
M-AC-010, M-AC-012, M-AC-014, M-AC-016, M-AC-018

2019.05

- A** belka centralna z kanałem x 1 szt |
central beam with cable channel x 1 pc



A1



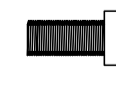
- B** śruba x 4 szt | screw x 4 pcs



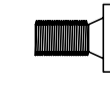
- C** nakrętka x 4 szt | nut x 4 pc



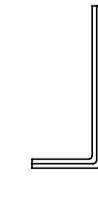
- D** śruba x 1 szt | screw x 1 pc



- E** śruba x 4 szt | screw x 4 pcs



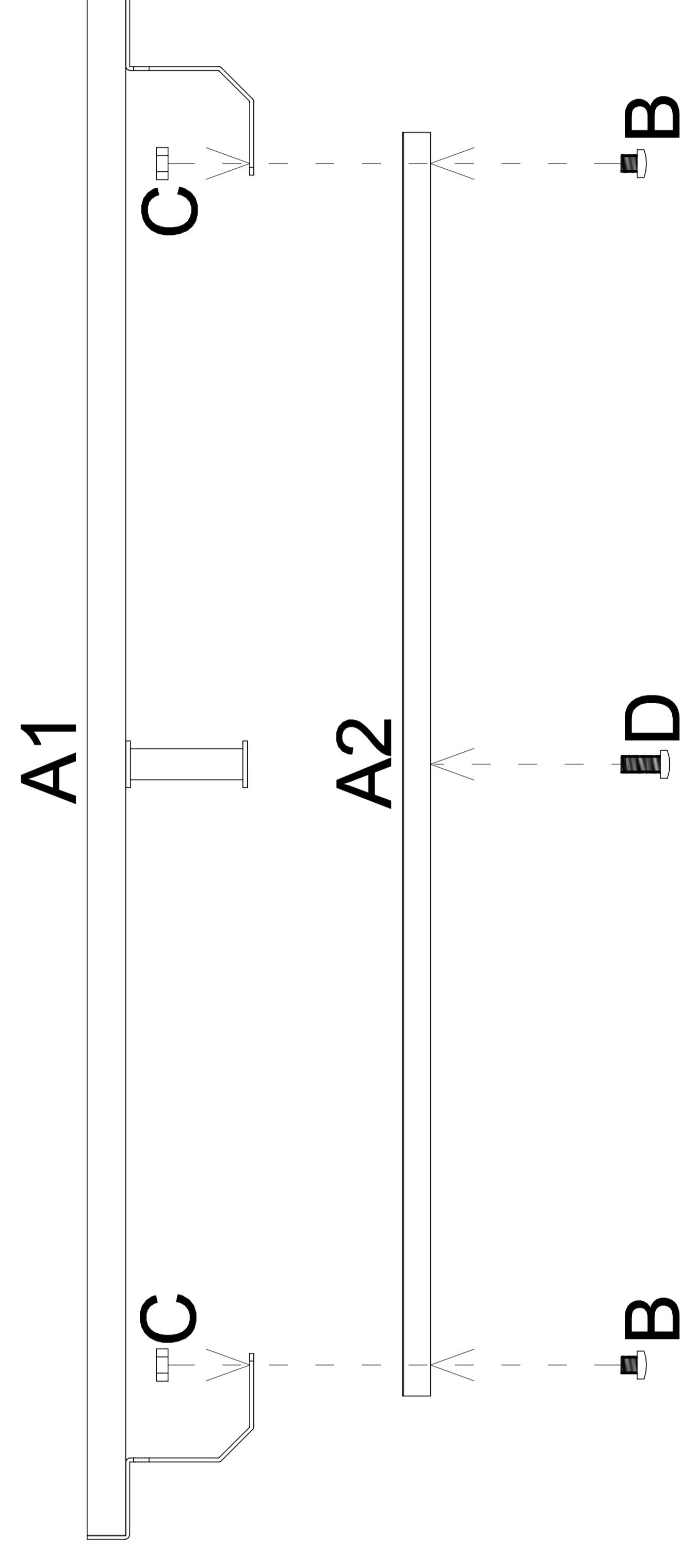
- F** klucz imbusowy x 1 szt | allen key x 1 pc



potrzebne narzędzia | necessary tools



1



2

