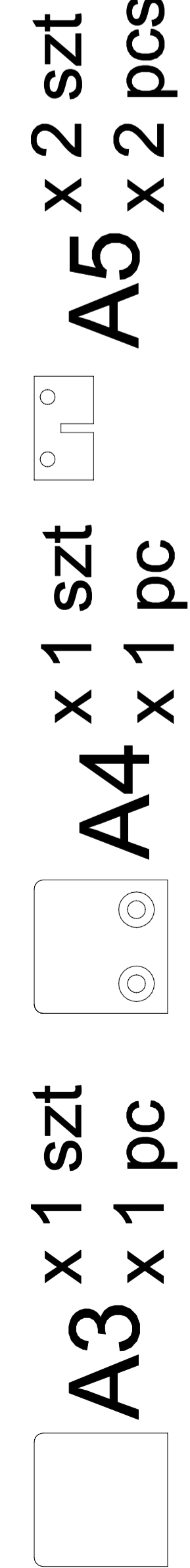


INSTRUKCJA MONTAŻU I ASSEMBLY INSTRUCTION

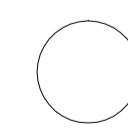
M-AS-061-6, M-AS-061-6IN, M-AS-061-8, M-AS-061-8IN

2020.07

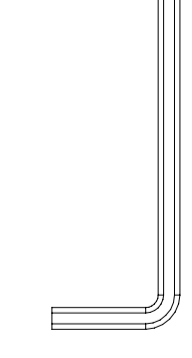
A wspornik do montażu przegrody szklanej do blatu | bracket for glass screen installed to table top



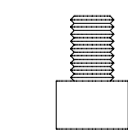
B podkładka filcowa x 1 szt | felt pad x 1 pc



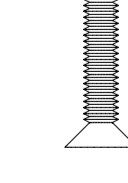
C klucz imbusowy x 1 szt | allen key x 1 pc



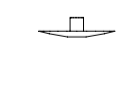
D śruba x 1 szt | screw x 1 pc



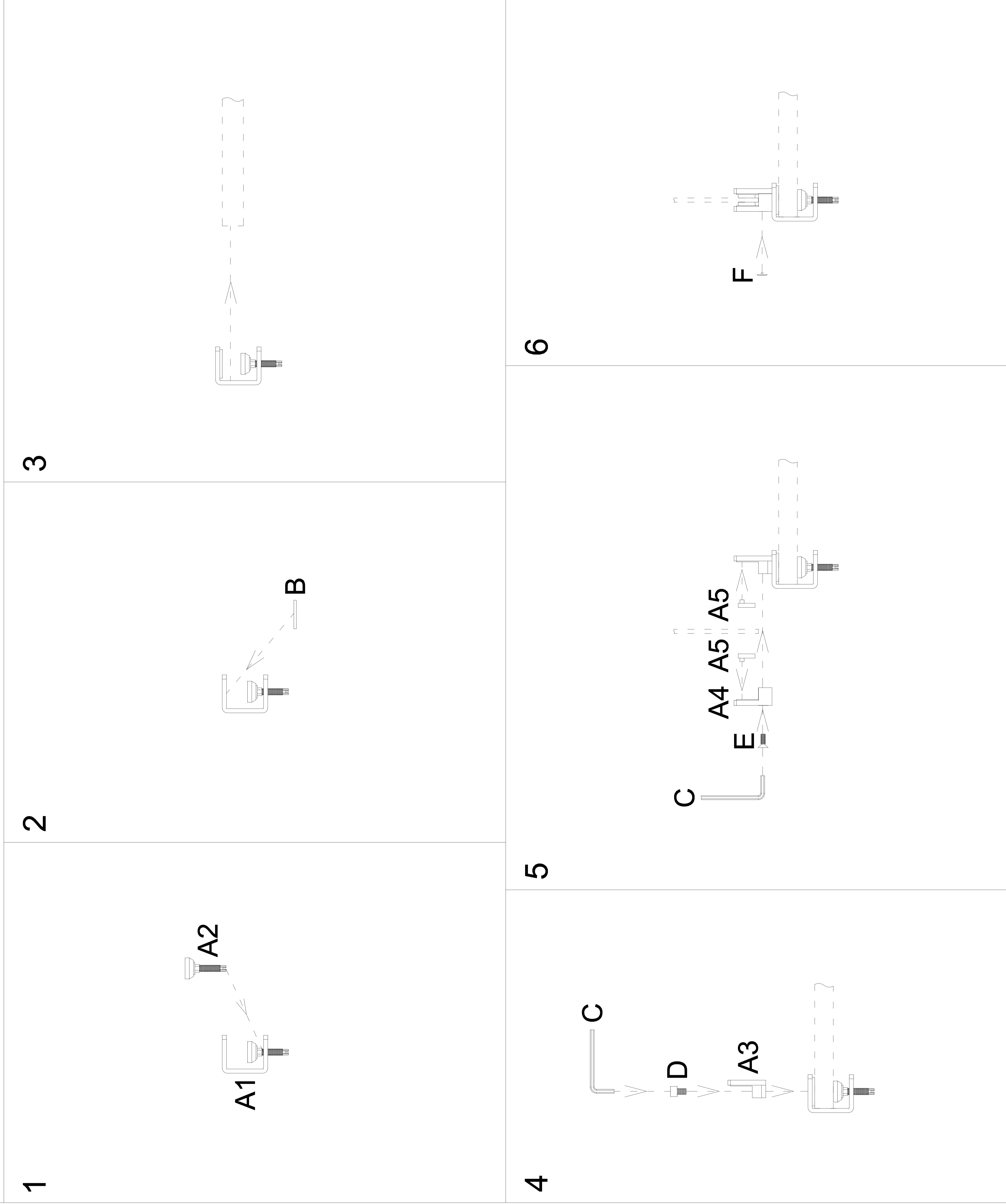
E śruba x 2 szt | screw x 2 pcs



F zaślepka x 2 szt | end plug x 2 pcs



potrzebne narzędzia | necessary tools



1

2

3

4

5

6