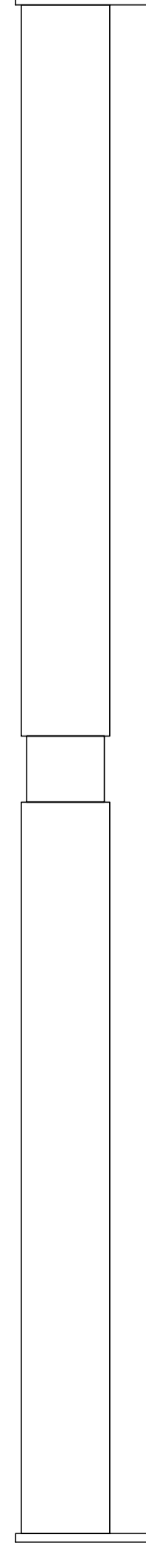


INSTRUKCJA MONTAŻU I ASSEMBLY INSTRUCTION

MBR 08-12, MBR 12-18, MBR 16-22

2019.05

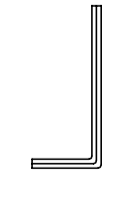
- A** belka łącząca regulowana x 1 szt I
flexible connecting beam x 1 pc



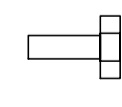
- B** wkręt dociskowy x 4 szt I grub
screw x 4 pcs



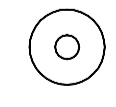
- C** klucz imbusowy x 1 szt I allen key x 1 pc



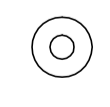
- D** śruba x 4 szt I screw x 4 pcs



- E** podkładka dystansowa cienka x 2 szt
I spacer thin x 2 pcs



- F** podkładka dystansowa gruba x 1 szt
I spacer thick x 1 pc



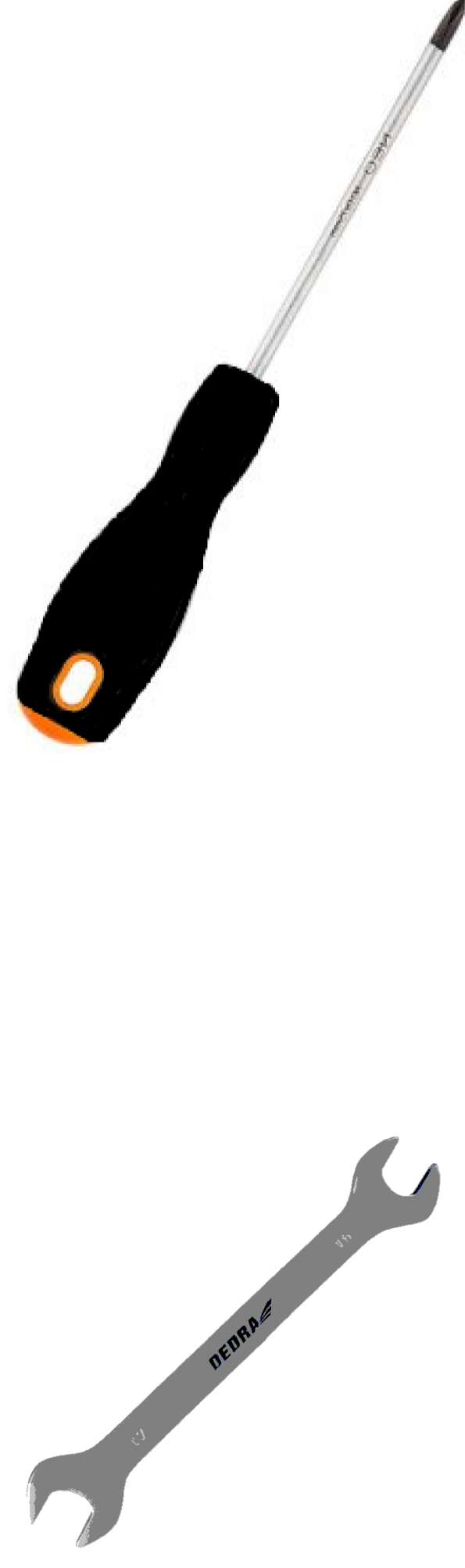
- G** wkręt x 1 szt I sharp screw x 1 pc



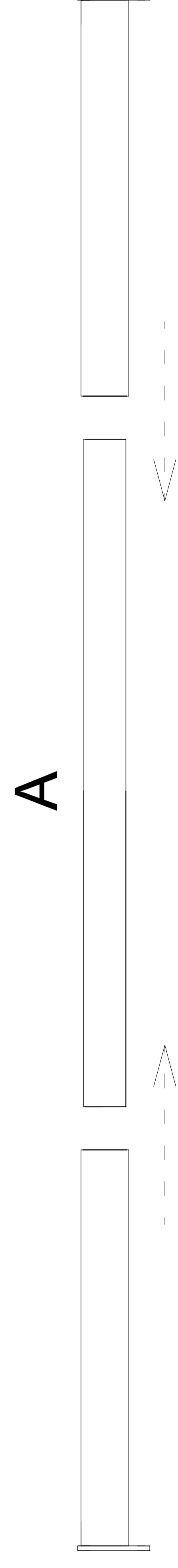
- H** wkręt x 2 szt I sharp screw x 2 pcs



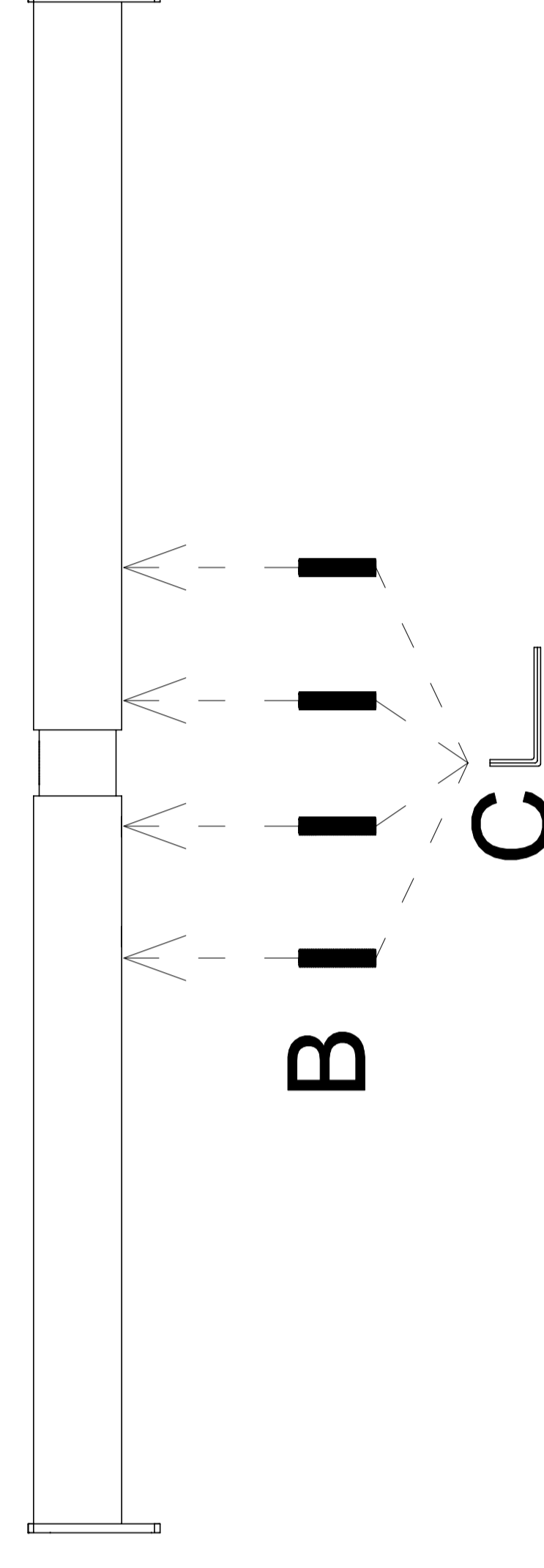
potrzebne narzędzia I necessary tools



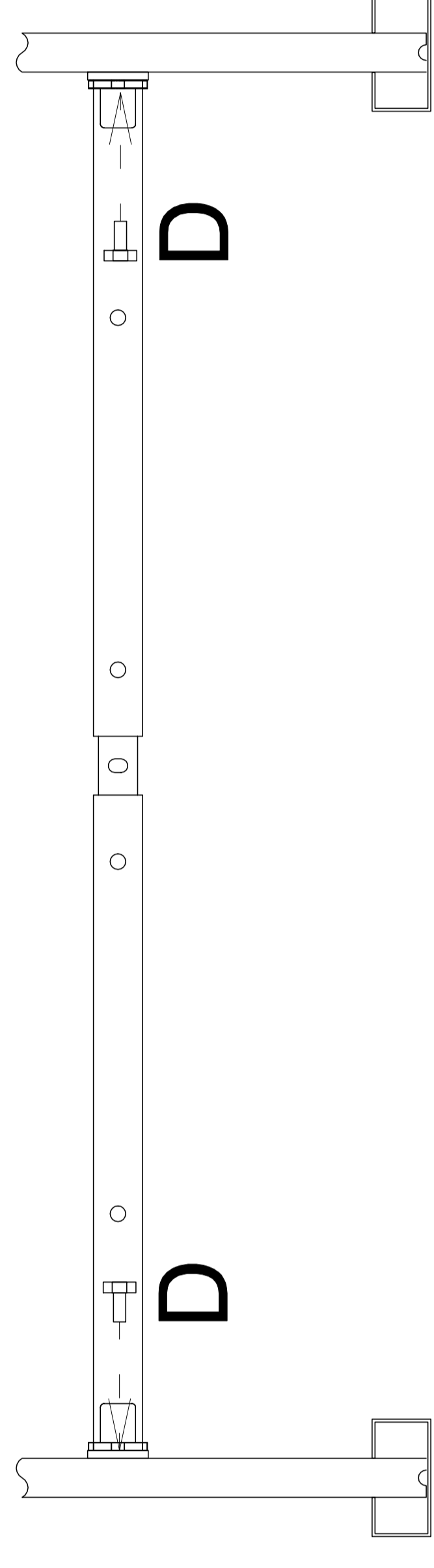
1



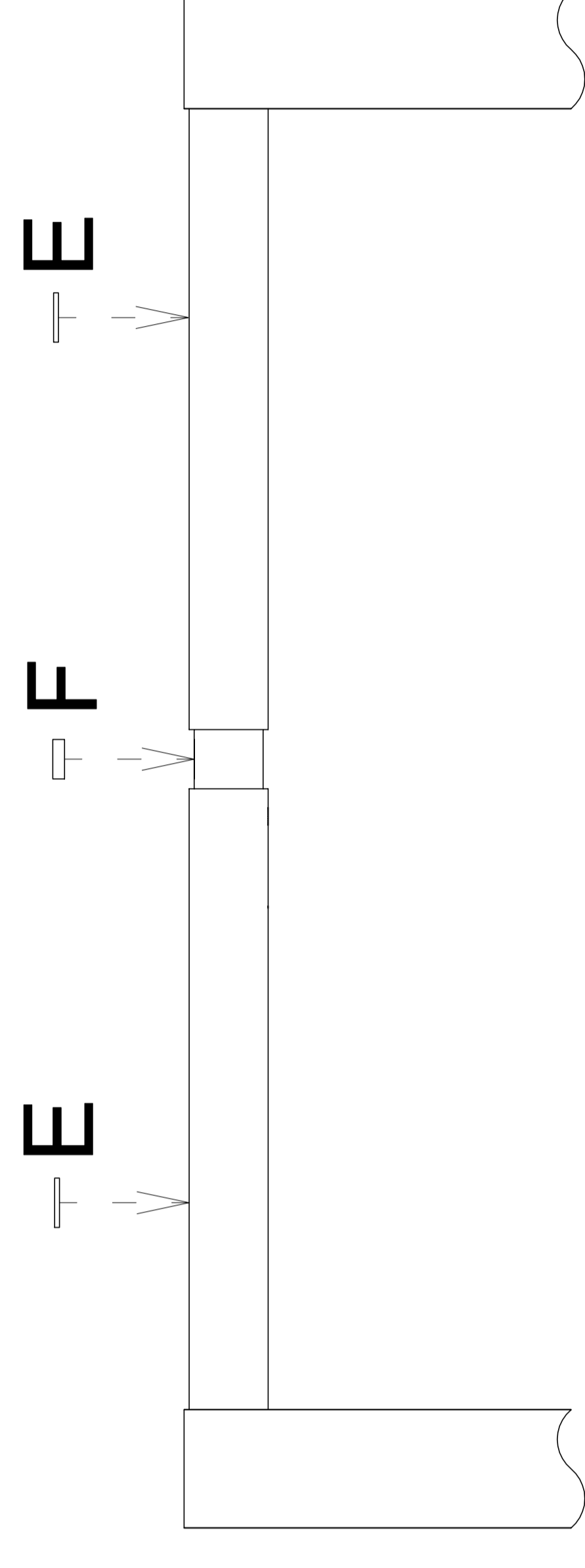
2



3



4



5

