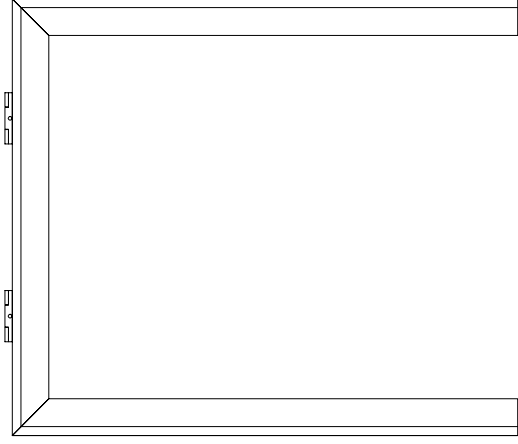


INSTRUKCJA MONTAŻU I ASSEMBLY INSTRUCTION

MQ 5506, MQ 5507, MQ 5508

2019.05

A rama stelaża x 2 szt | steel legs x 2 pcs



B wkładka x 4 szt | insert x 4 pcs



C regulator x 4 szt | adjustable feet x 4 pcs



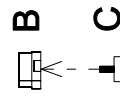
D wkręt x 8 szt | sharp screw x 8 pcs



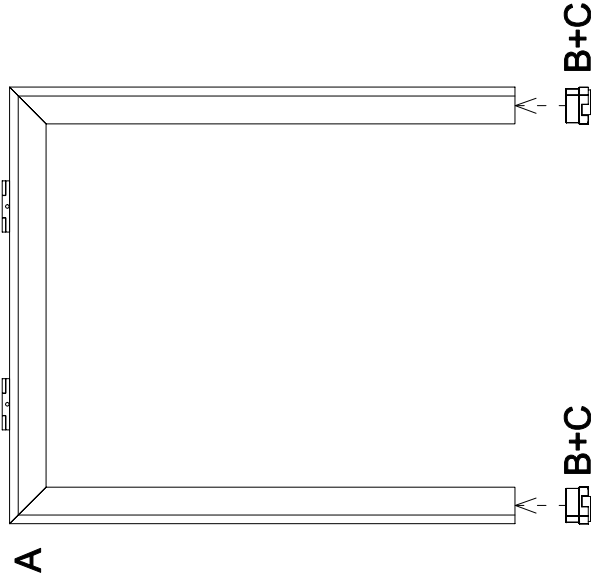
potrzebne narzędzia | necessary tools



1



2



3

