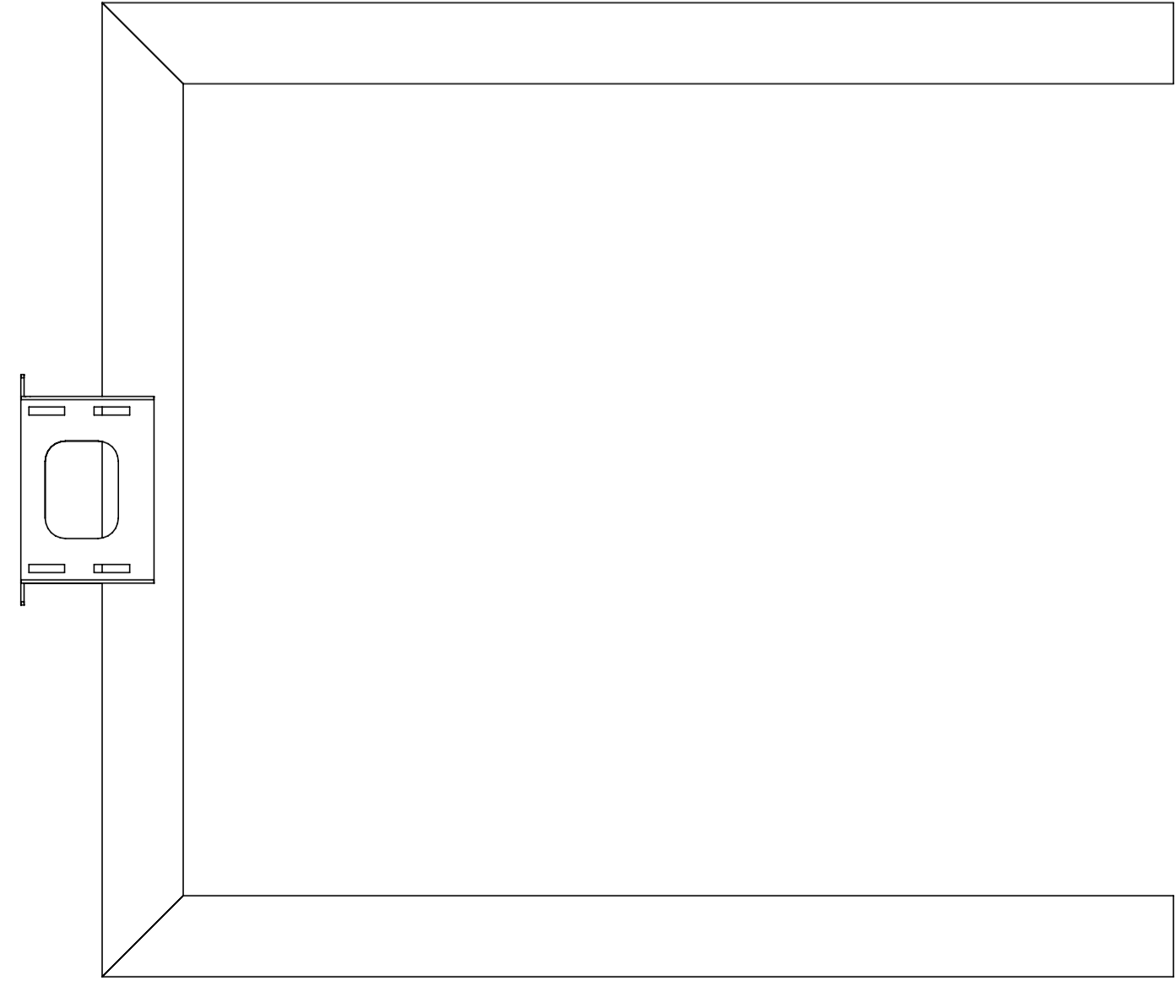
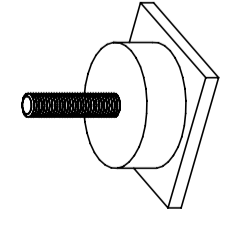


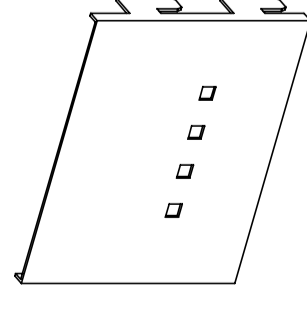
**A** stelaż biurka x 2 szt | steel legs x 2 pcs



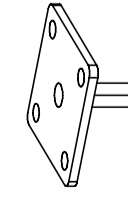
**B** regulator x 4 szt | adjustable feet x 4 pcs



**C** osłonka głowicy x 2 szt | top cover x 2 pcs



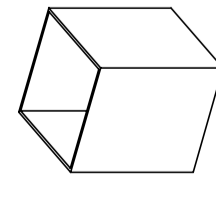
**D** płytki montażowa x 4 szt  
| mounting plate x 4 pcs



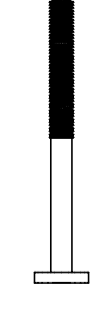
**E** wkręt x 16 szt | sharp screw x 16 pcs



**F** dystans x 4 szt | support x 4 pcs



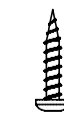
**G** śruba x 4 szt | screw x 4 pcs



**H** klucz imbusowy x 1 szt | allen key x 1 pc



**I** wkręt x 4 szt | sharp screw x 4 pcs



potrzebne narzędzia | necessary tools

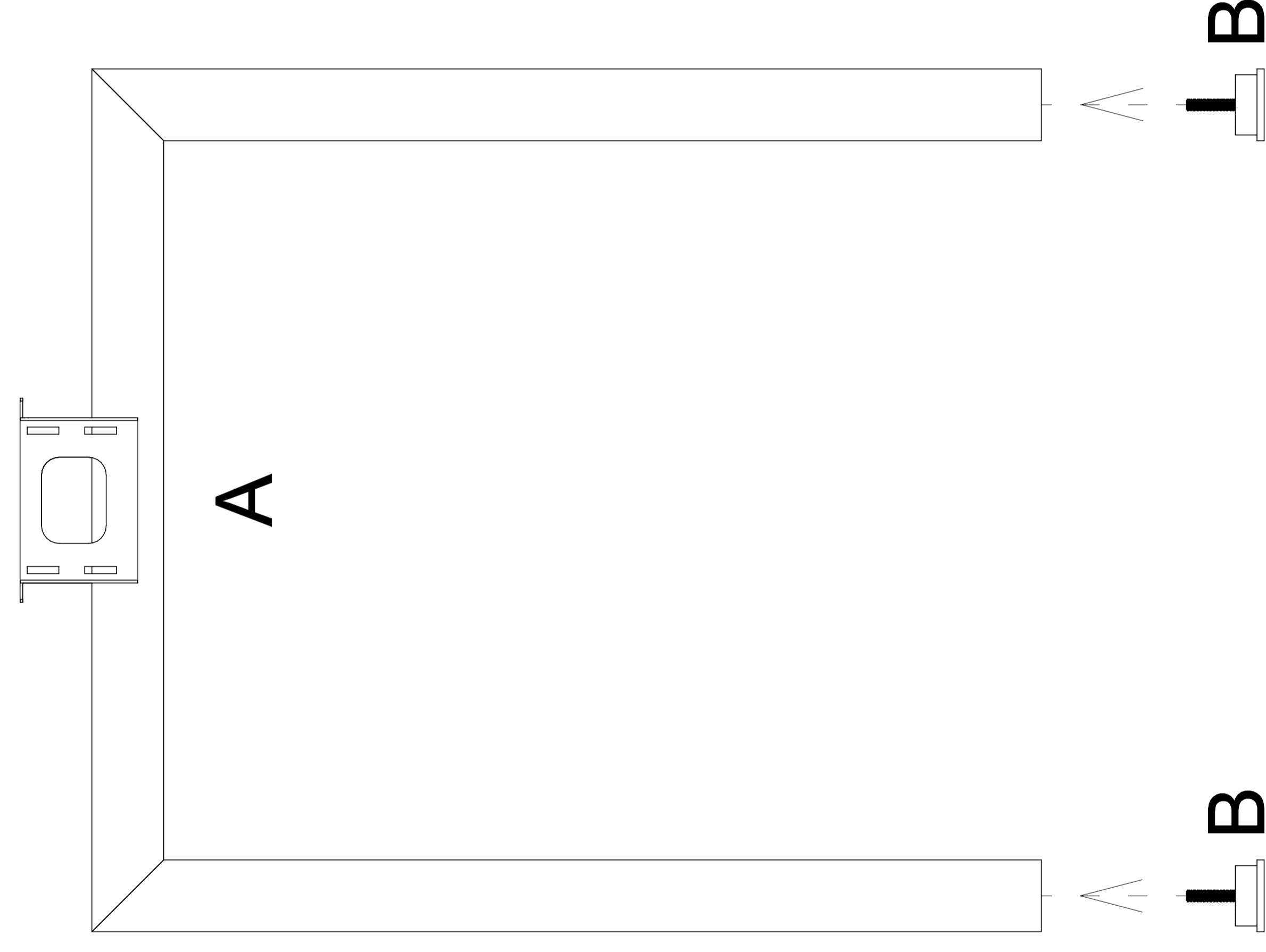


# INSTRUKCJA MONTAŻU | ASSEMBLY INSTRUCTION

## Q 7106, Q 7107, Q 7108

2019.06

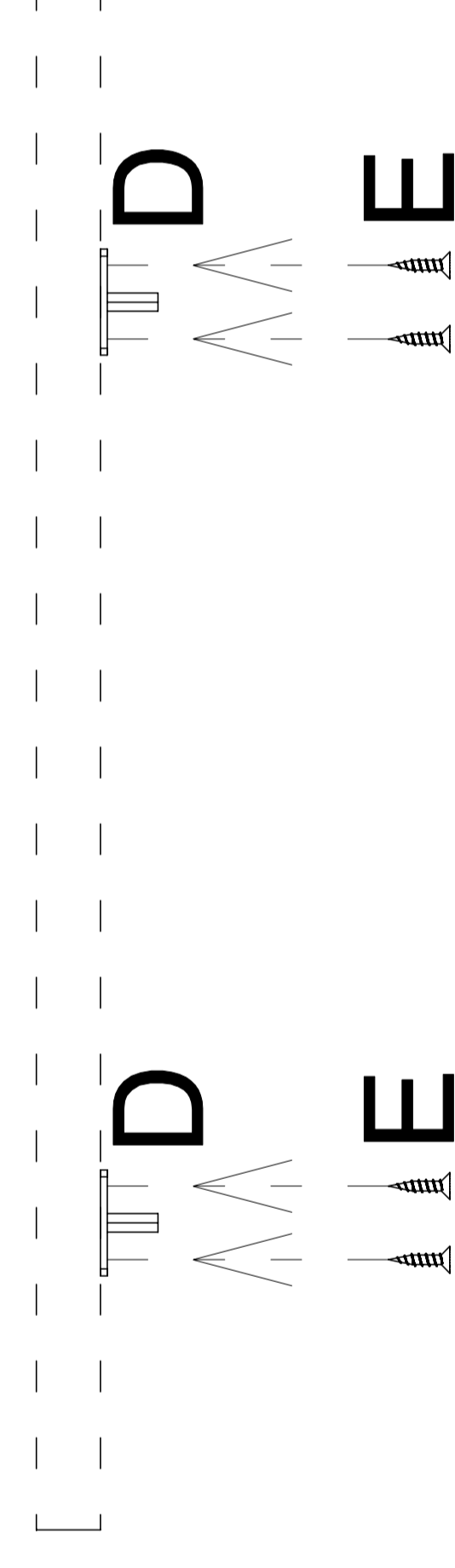
1



2



3



4

