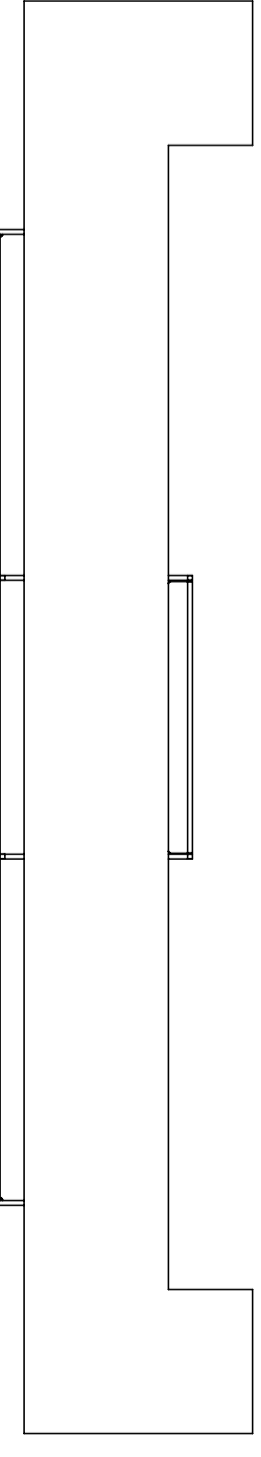


- A** stelaż podpierający x 1 szt | supporting leg x 1 pc



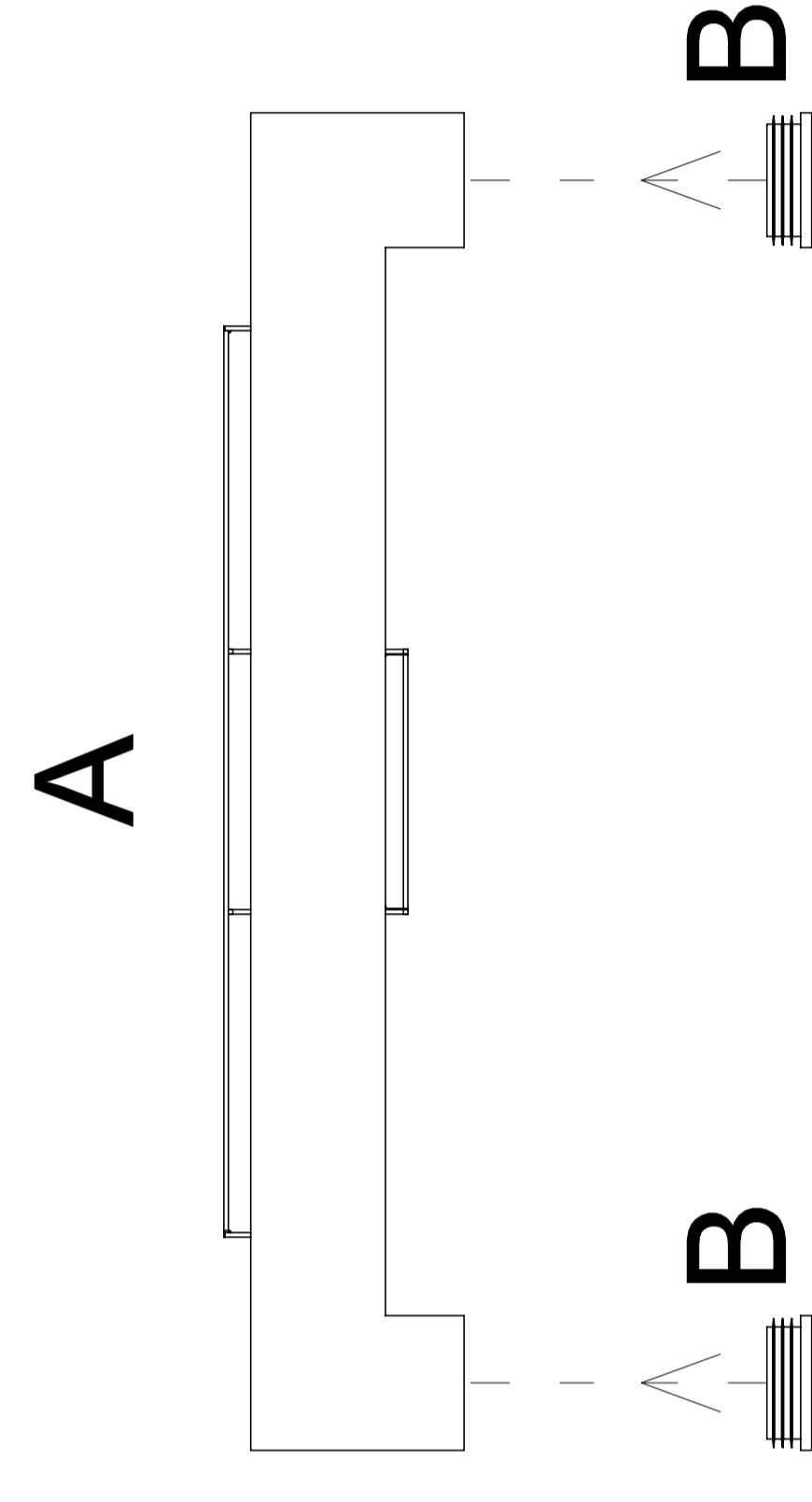
INSTRUKCJA MONTAŻU I ASSEMBLY INSTRUCTION

Q 7206-K, Q 7207-K, Q 7208-K

2019.06



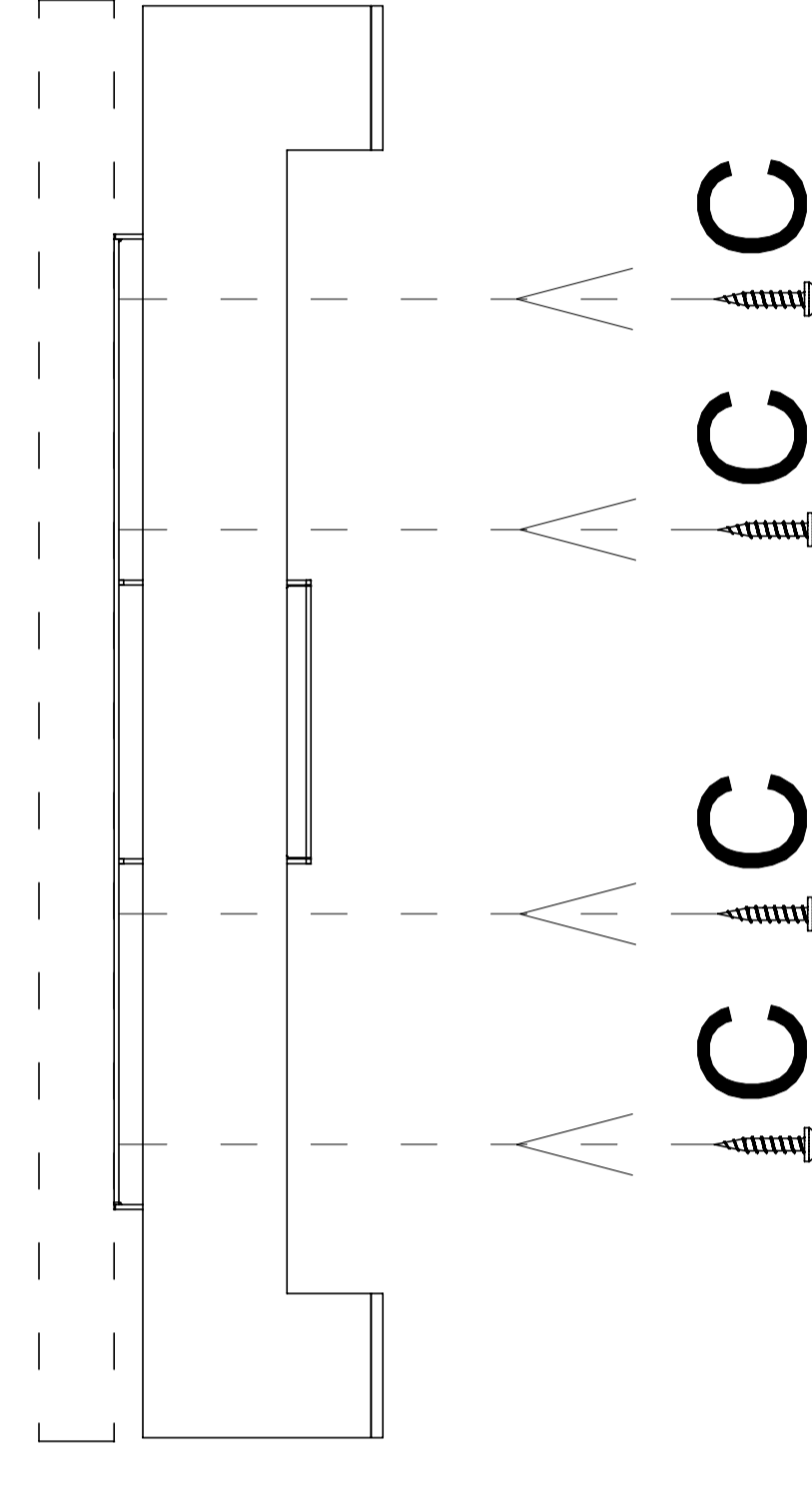
1



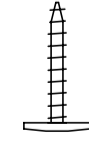
- B** zaślepka x 2 szt | end plug x 2 pcs



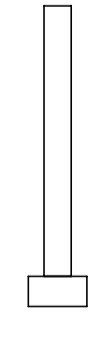
2



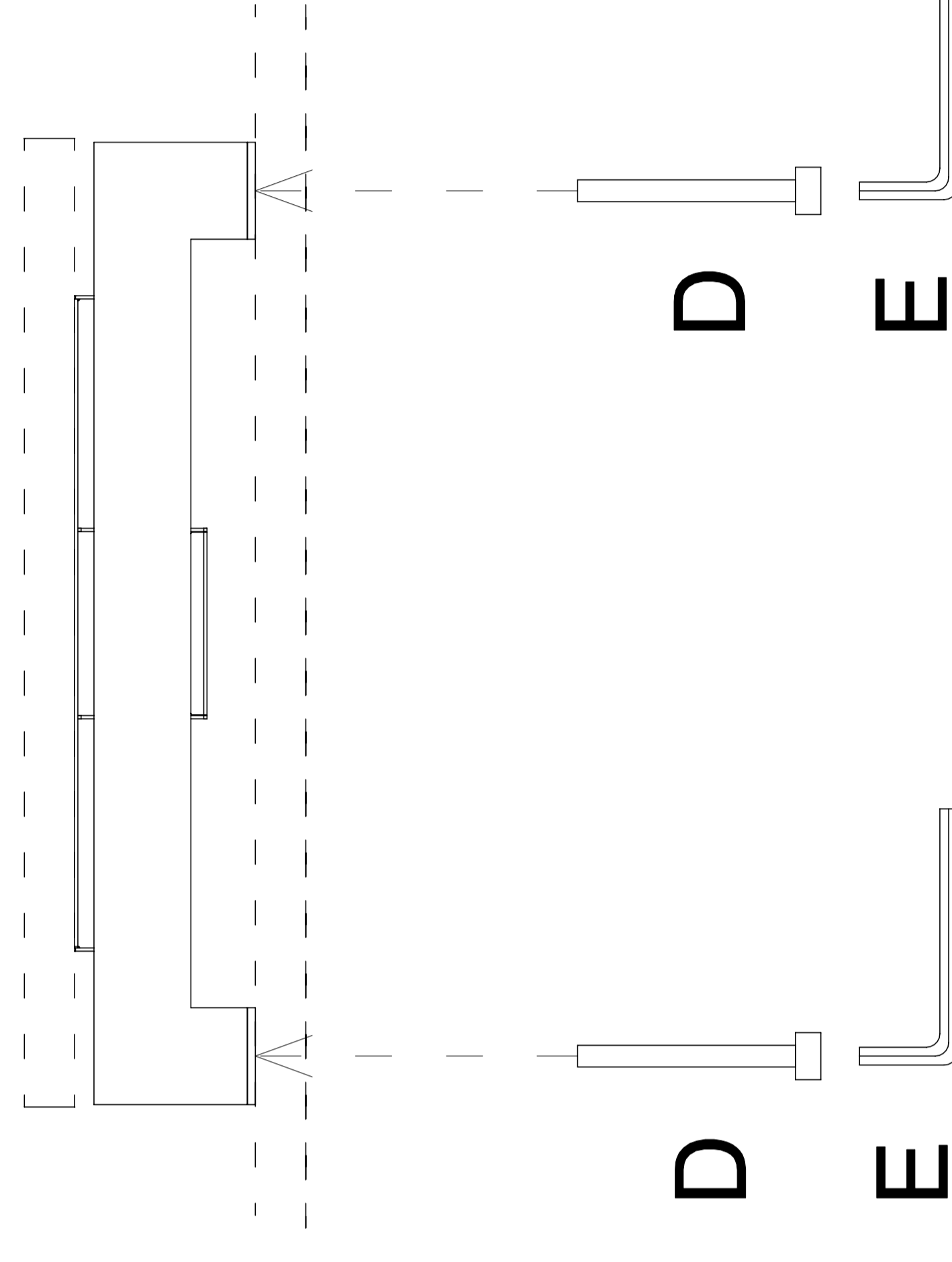
- C** wkręt x 8 szt | sharp screw x 8 pcs



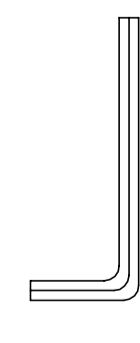
- D** śruba x 2 szt | screw x 2 pcs



3



- E** klucz imbusowy x 1 szt | allen key x 1 pc



potrzebne narzędzia | necessary tools

