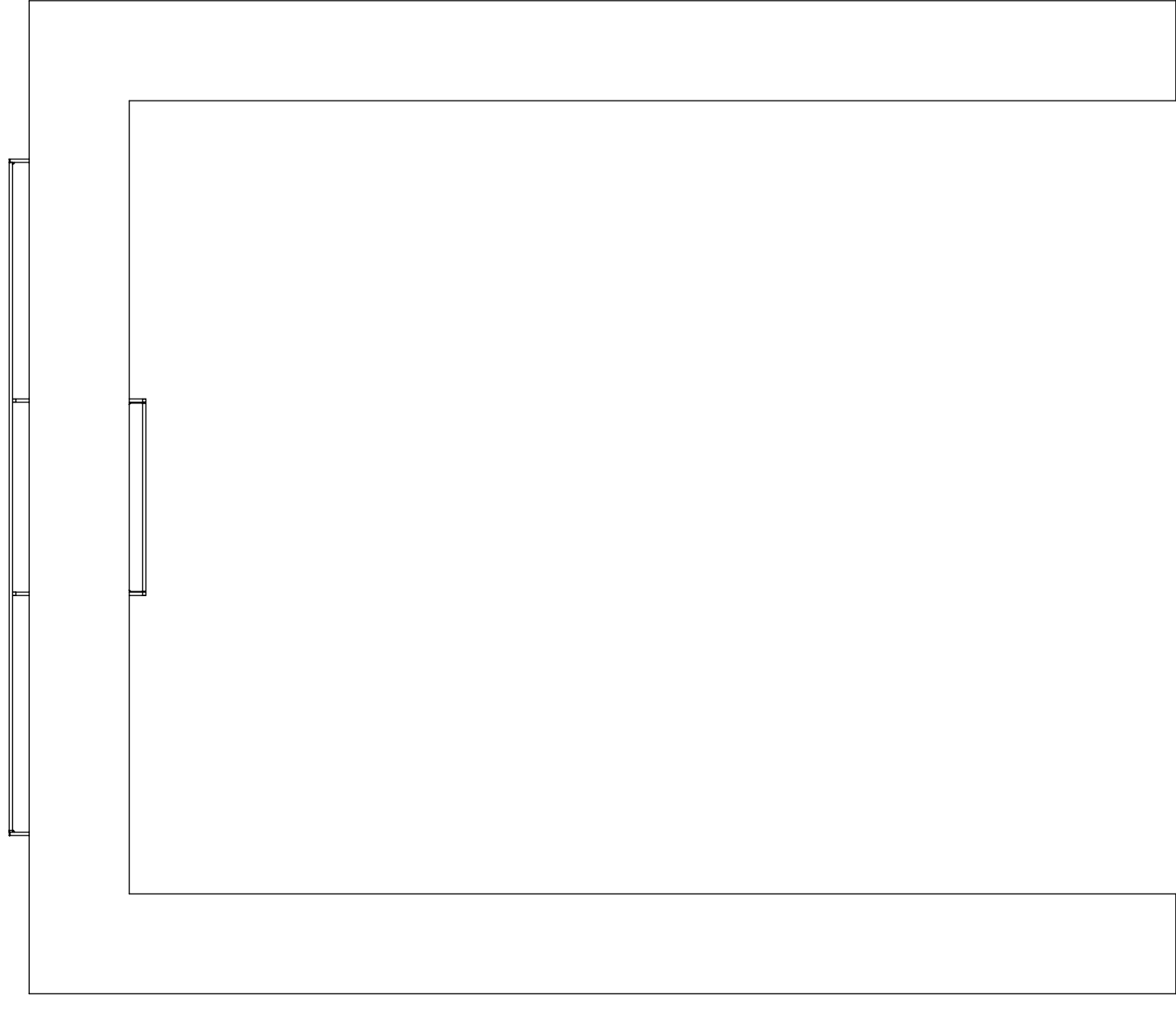
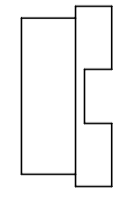


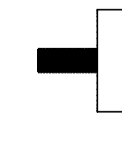
A stelaż biurka x 2 szt | steel legs x 2 pcs



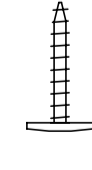
B wkładka x 4 szt | insert x 4 pcs



C regulator x 4 szt | adjustable feet x 4 pcs



D wkręt x 16 szt | sharp screw x 16 pcs



potrzebne narzędzia | necessary tools



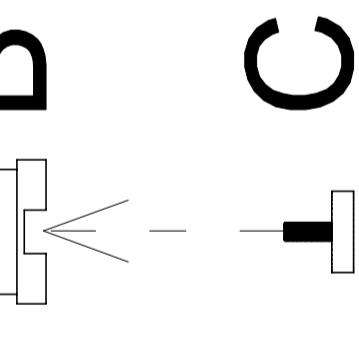
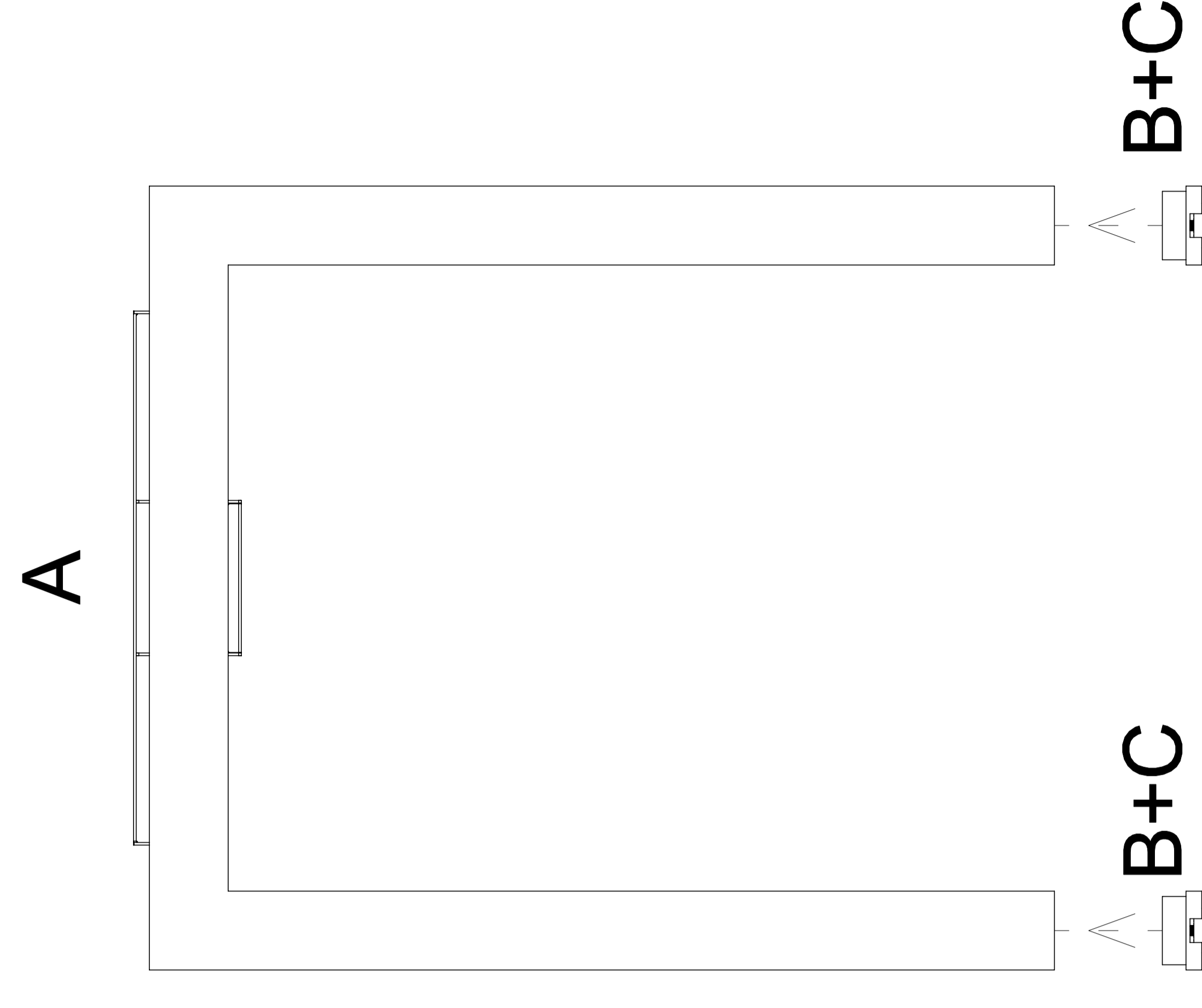
INSTRUKCJA MONTAŻU | ASSEMBLY INSTRUCTION

Q 7206, Q 7207, Q 7208

2019.06

1

2



3

