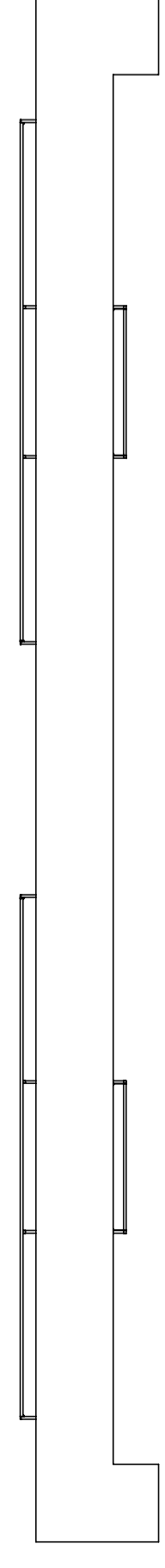


- A** stelaż podpierający podwójny x 1 szt  
I double supporting leg x 1 pc



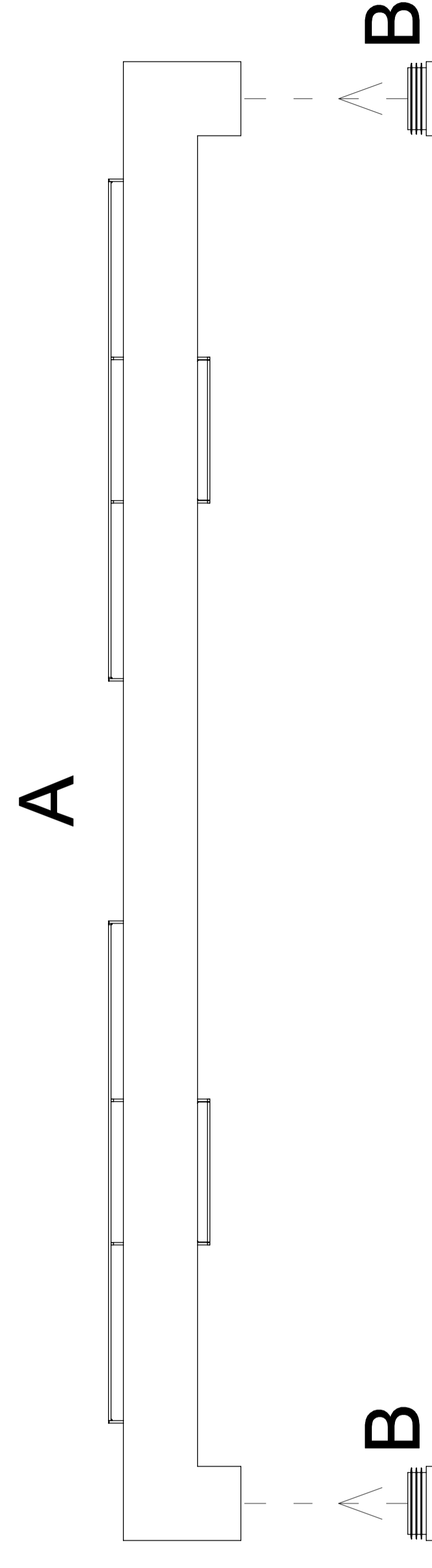
# INSTRUKCJA MONTAŻU I ASSEMBLY INSTRUCTION

## Q 7212-K, Q 7214-K, Q 7216-K

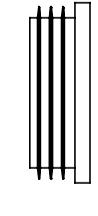
2019.06



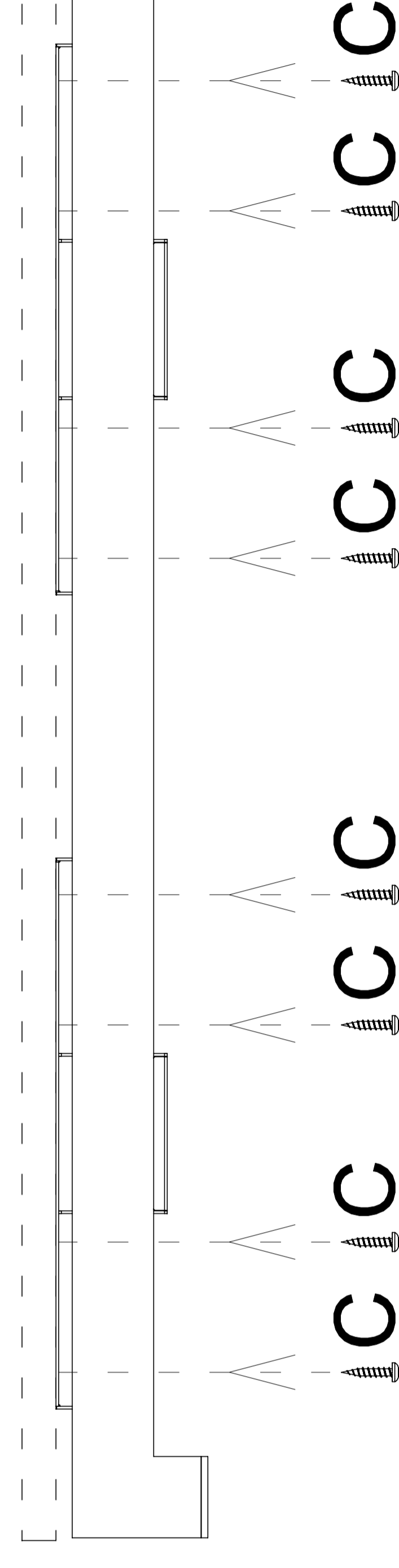
1



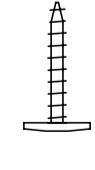
- B** zaślepka x 2 szt I end plug x 2 pcs



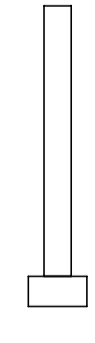
2



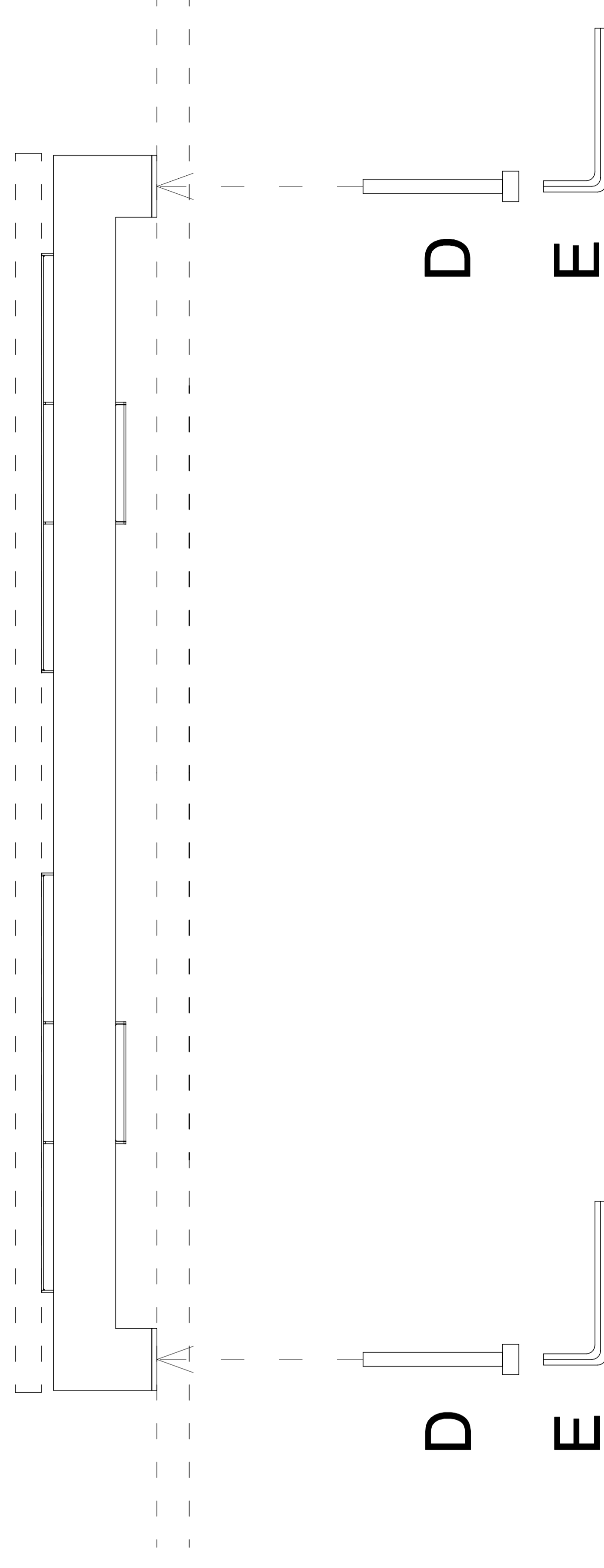
- C** wkręt x 16 szt I sharp screw x 16 pcs



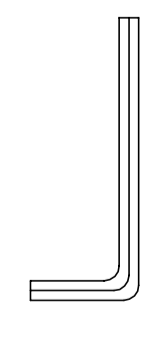
- D** śruba x 2 szt I screw x 2 pcs



3



- E** klucz imbusowy x 1 szt I allen key x 1 pc



potrzebne narzędzia I necessary tools

