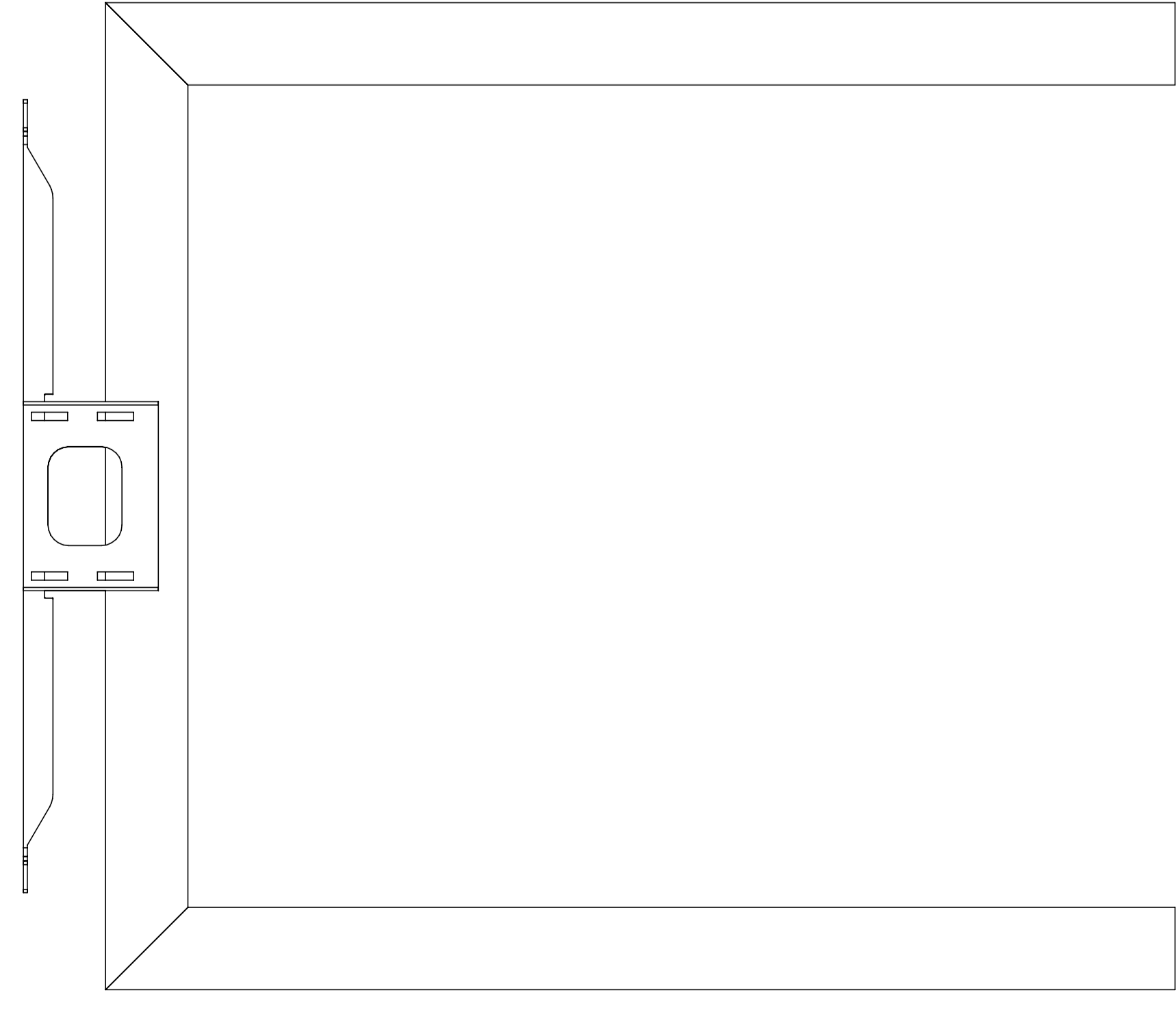
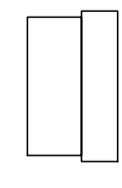


A stelaż biurka x 2 szt | steel legs x 2 pcs



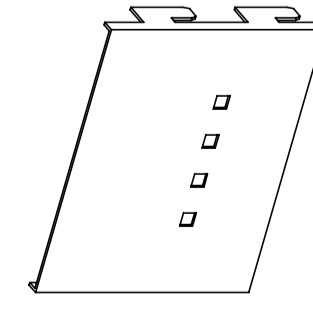
B wkładka x 4 szt | insert x 4 pcs



C regulator x 4 szt | adjustable feet x 4 pcs



D osłonka głowicy x 2 szt | top cover x 2 pcs



E wkręt x 12 szt | sharp screw x 12 pcs



potrzebne narzędzia | necessary tools

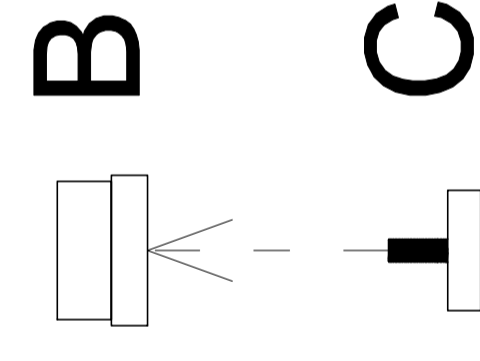


INSTRUKCJA MONTAŻU | ASSEMBLY INSTRUCTION

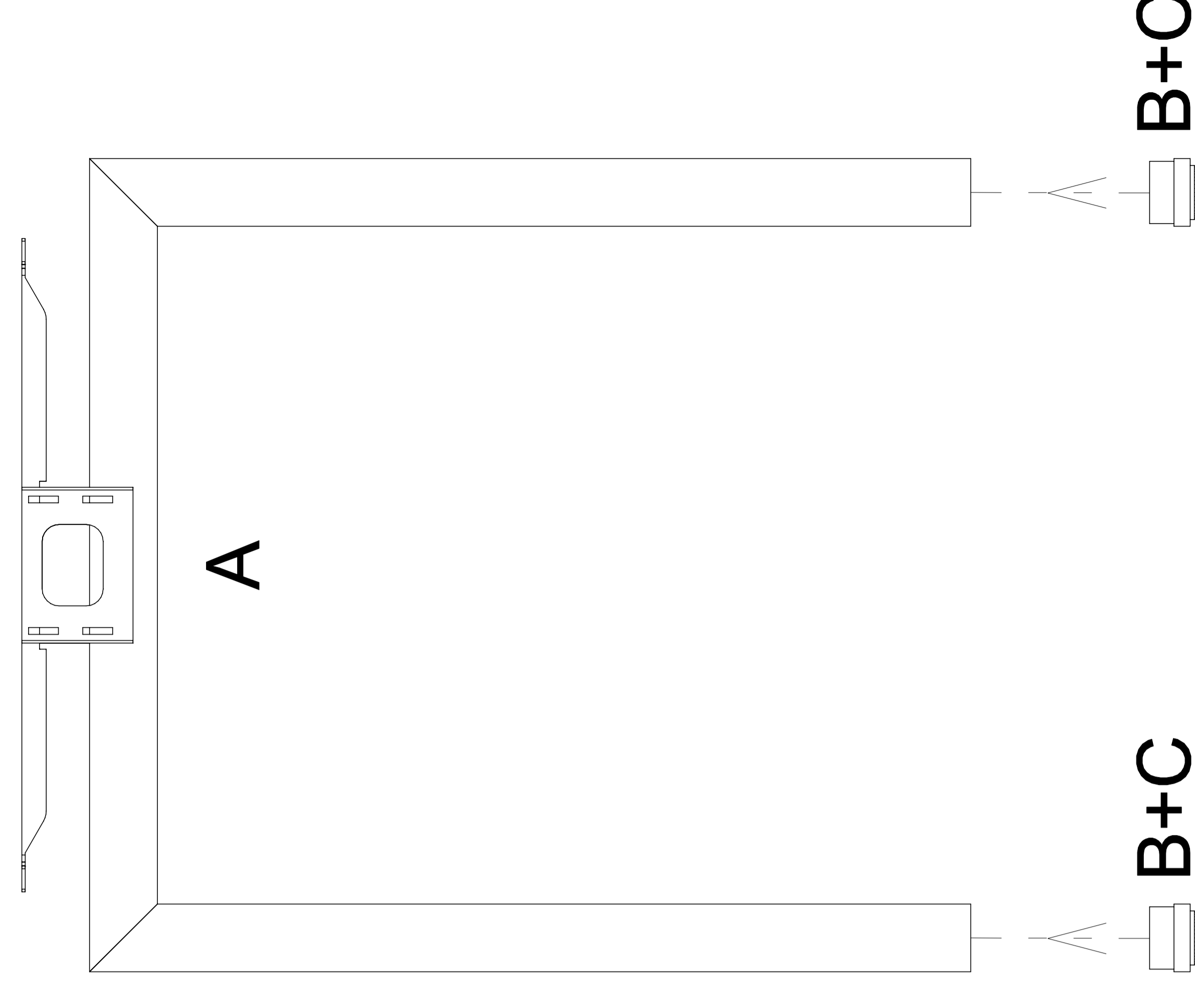
Q 7306, Q 7307, Q 7308

2019.06

1



2



3



4

