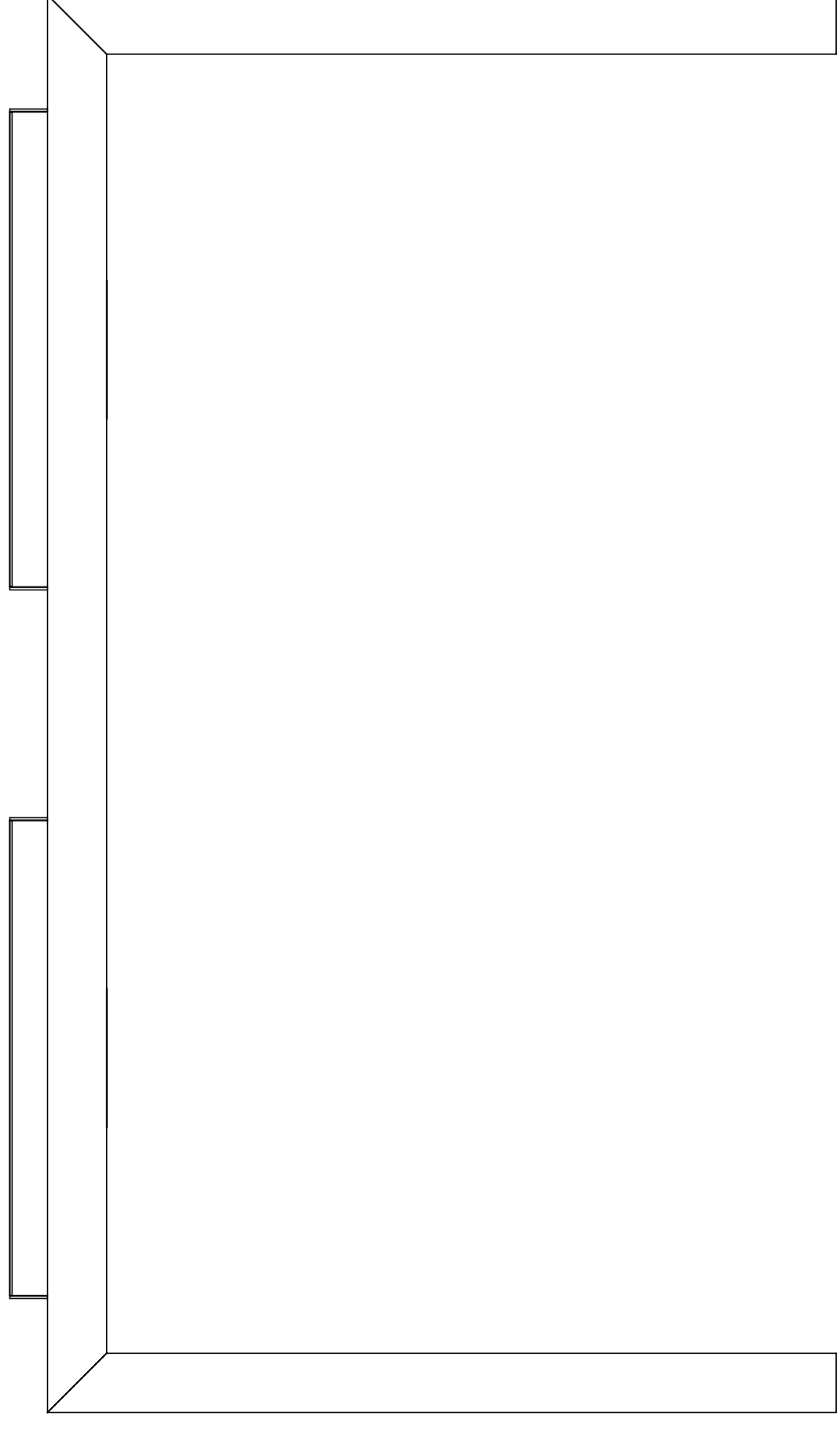
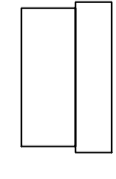


- A** stelaż biurka podwójny x 2 szt | double steel legs x 2 pcs



- B** wkładka x 4 szt | insert x 4 pcs



- C** regulator x 4 szt | adjustable feet x 4 pcs



- D** wkręt x 32 szt | sharp screw x 32 pcs



potrzebne narzędzia | necessary tools



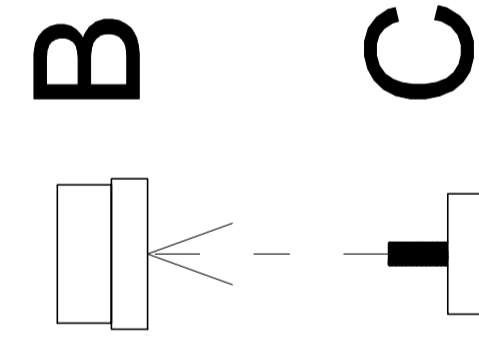
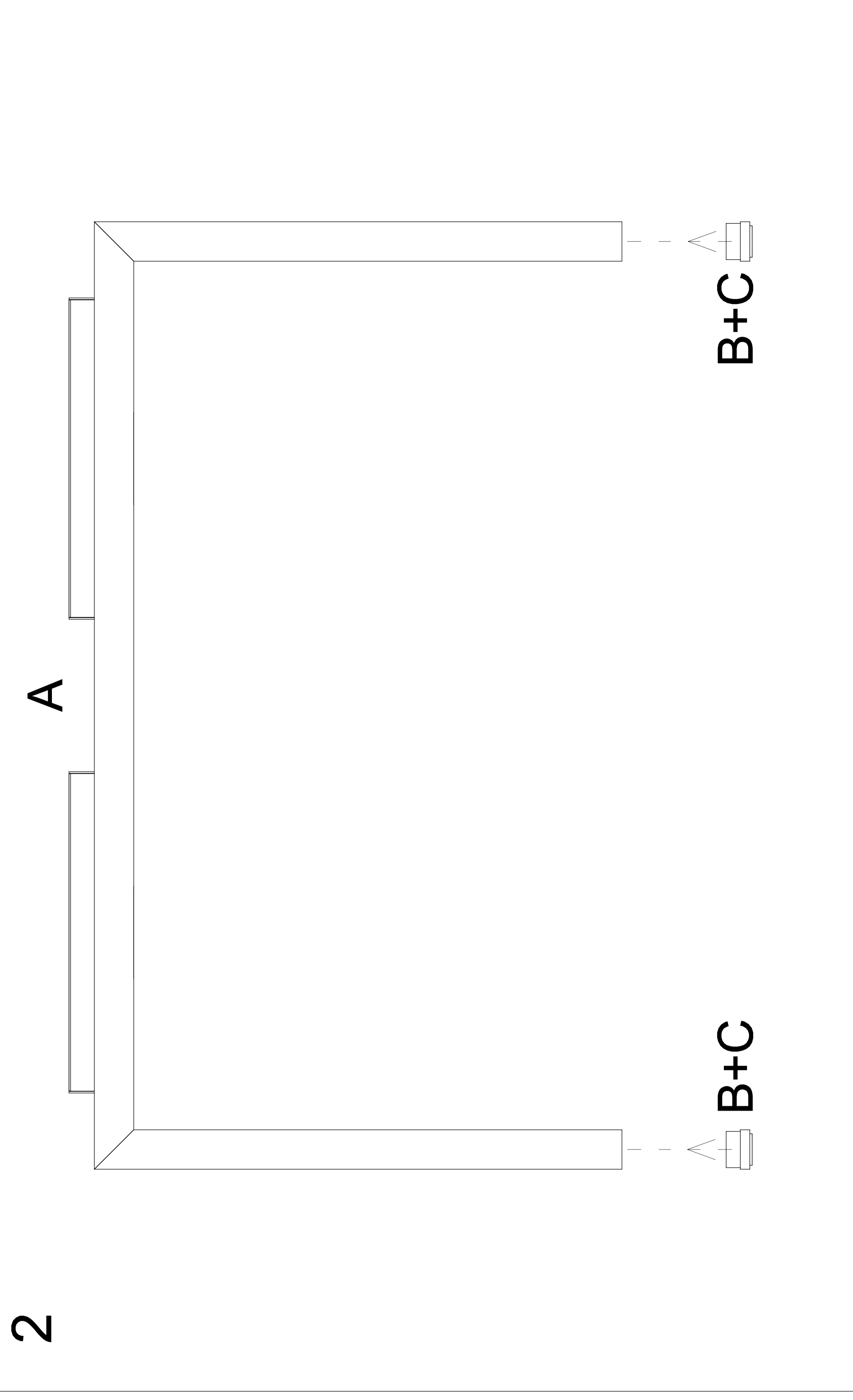
INSTRUKCJA MONTAŻU | ASSEMBLY INSTRUCTION

Q 7512, Q 7514, Q 7516

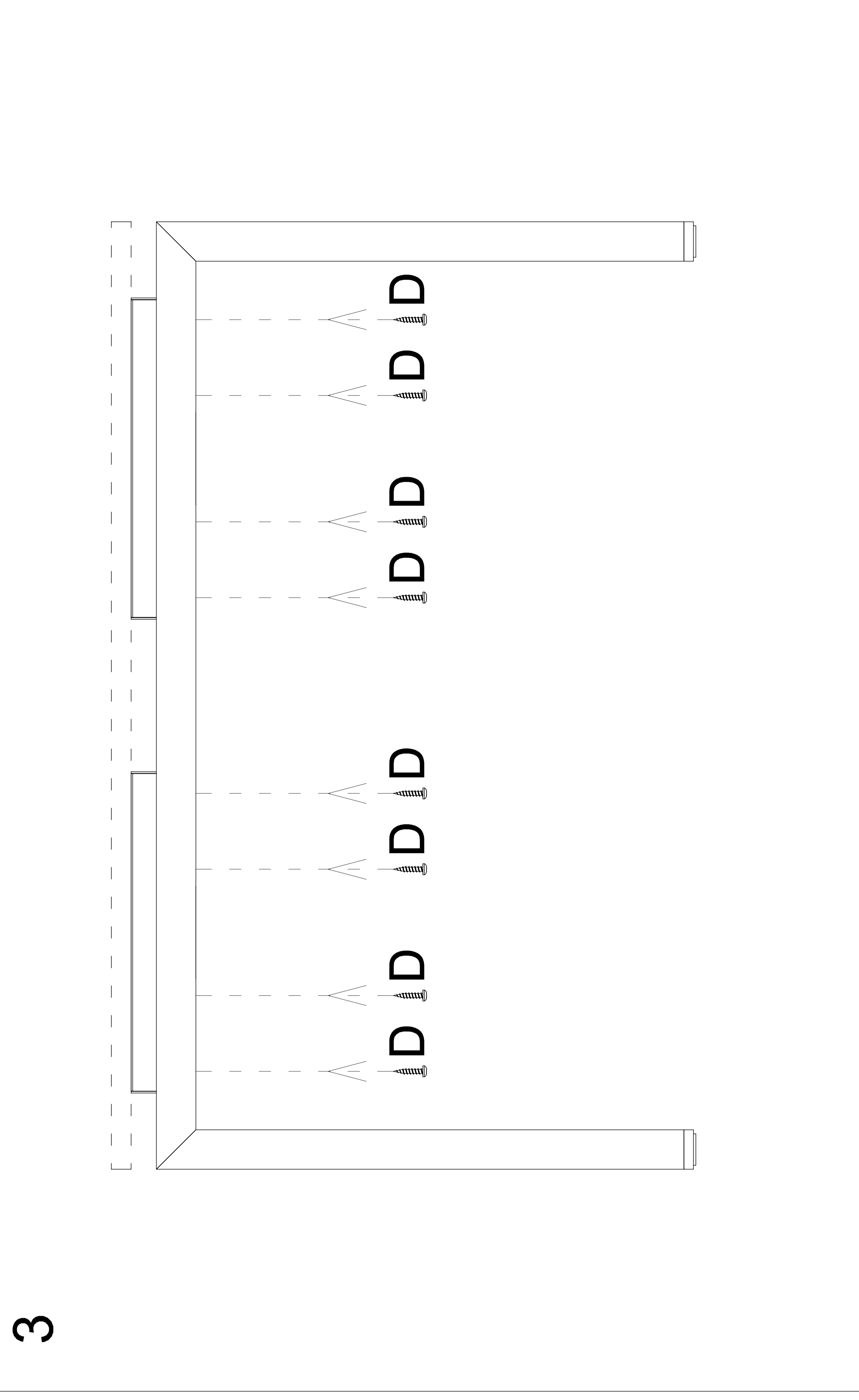
2019.06

1

2



3



potrzebne narzędzia | necessary tools

