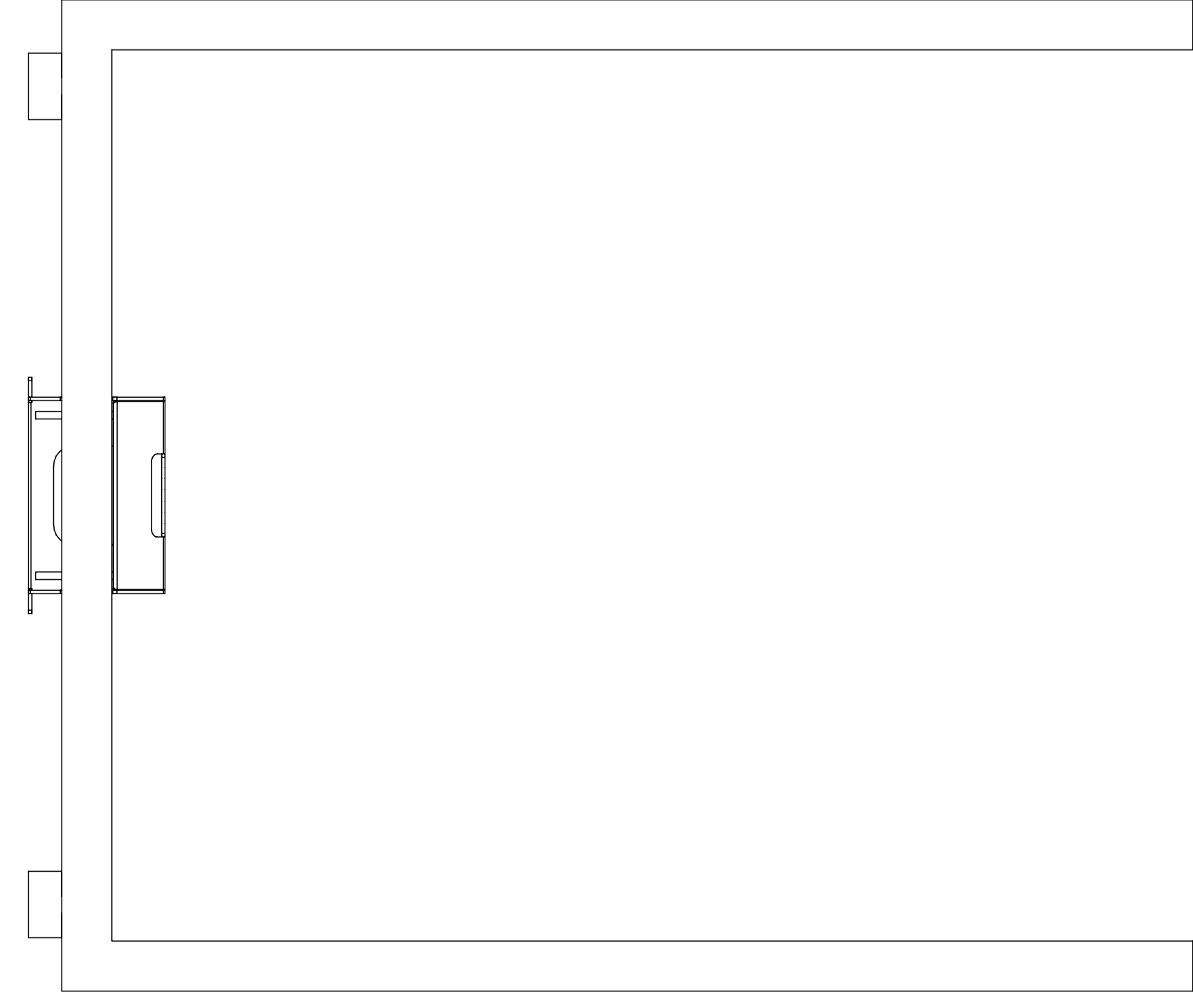
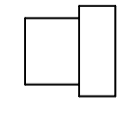


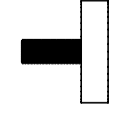
A stelaż biurka x 2 szt | steel legs x 2 pcs



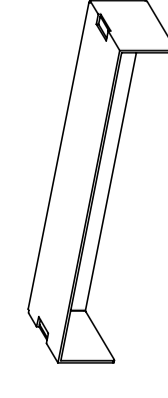
B wkładka x 4 szt | insert x 4 pcs



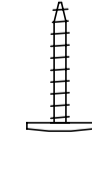
C regulator x 4 szt | adjustable feet x 4 pcs



D osłonka głowicy x 2 szt | top cover x 2 pcs



E wkręt x 12 szt | sharp screw x 12 pcs



potrzebne narzędzia | necessary tools



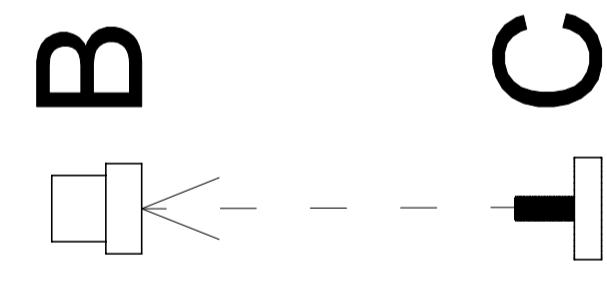
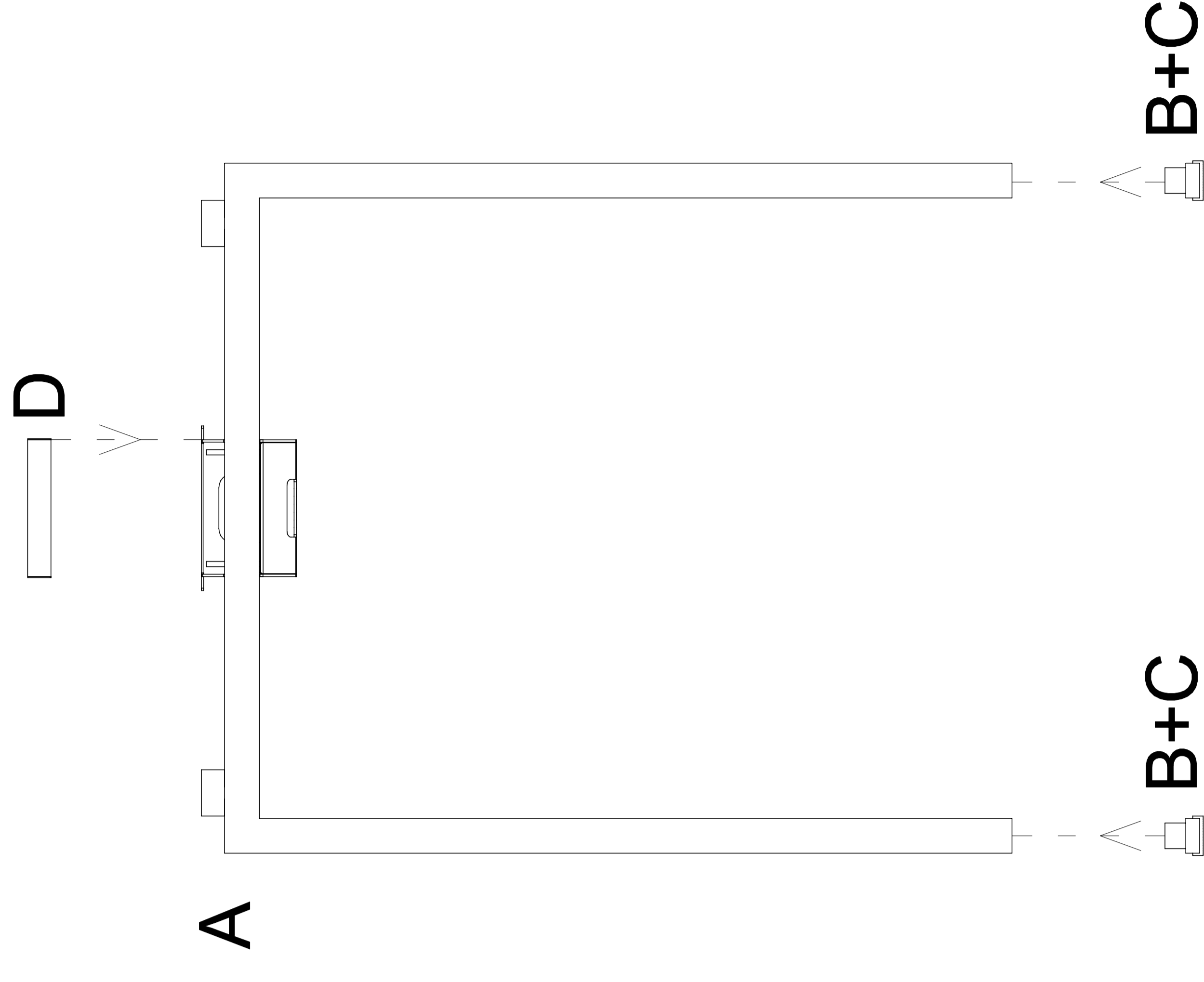
INSTRUKCJA MONTAŻU | ASSEMBLY INSTRUCTION

Q 7606, Q 7607, Q 7608

2019.06

1

2



3

