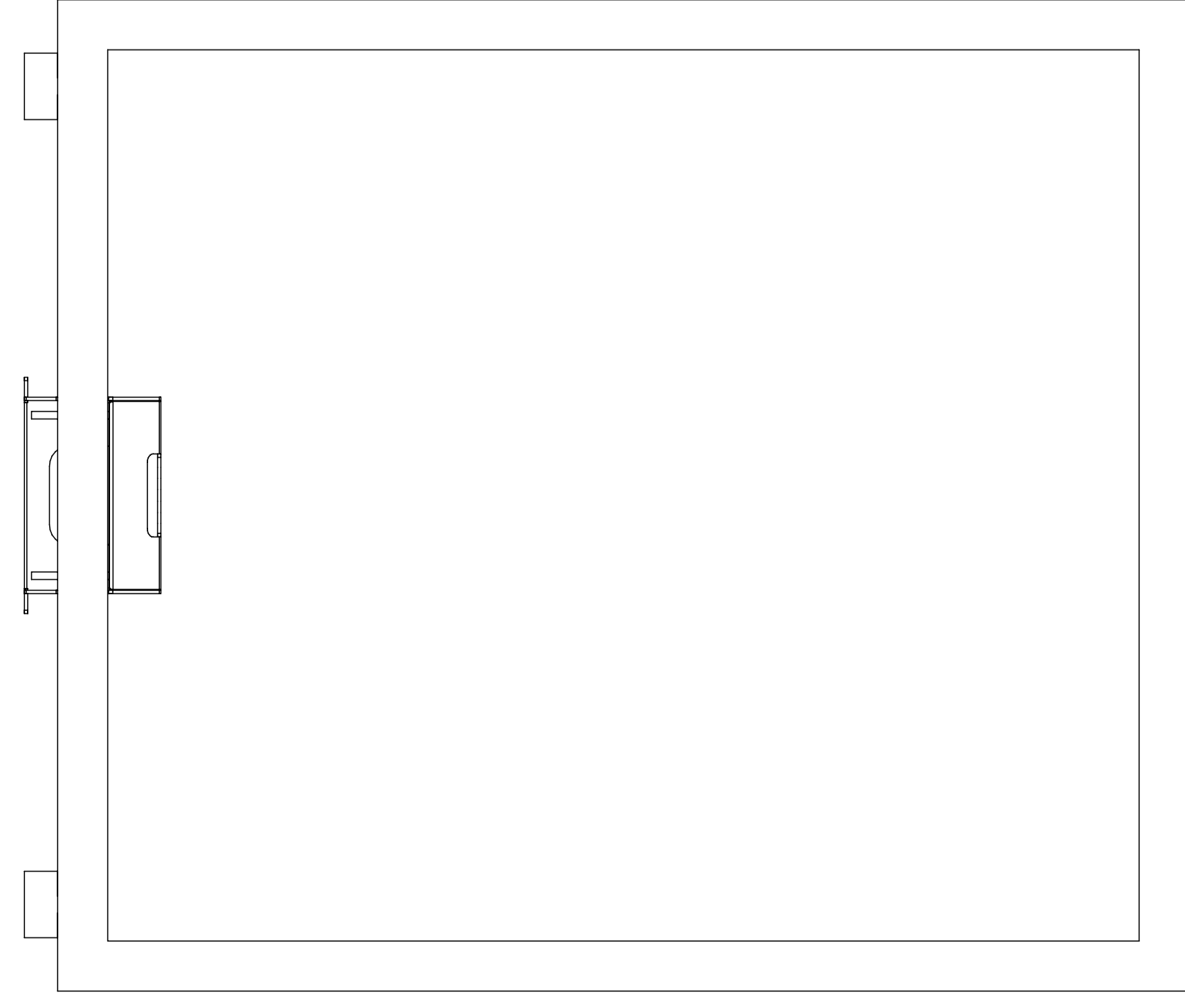
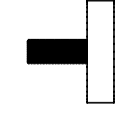


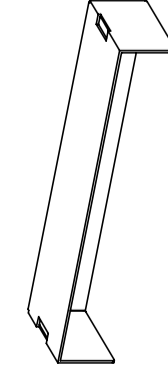
A stelaż biurka x 2 szt | steel legs x 2 pcs



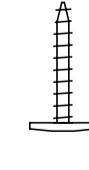
B regulator x 4 szt | adjustable feet x 4 pcs



C osłonka głowicy x 2 szt | top cover x 2 pcs



D wkręt x 12 szt | sharp screw x 12 pcs



potrzebne narzędzia | necessary tools

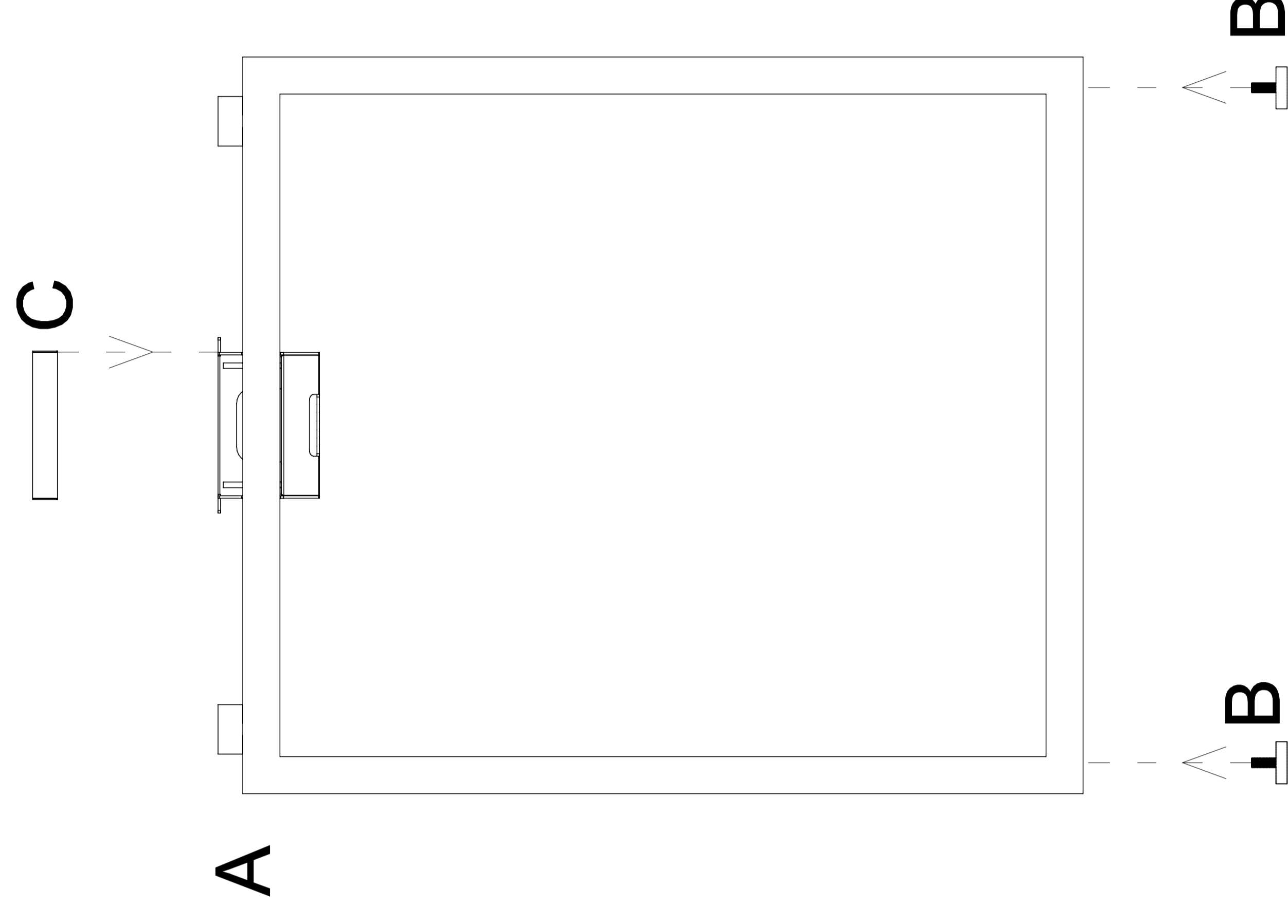


INSTRUKCJA MONTAŻU | ASSEMBLY INSTRUCTION

Q 7906, Q 7907, Q 7908

2019.06

1



2

