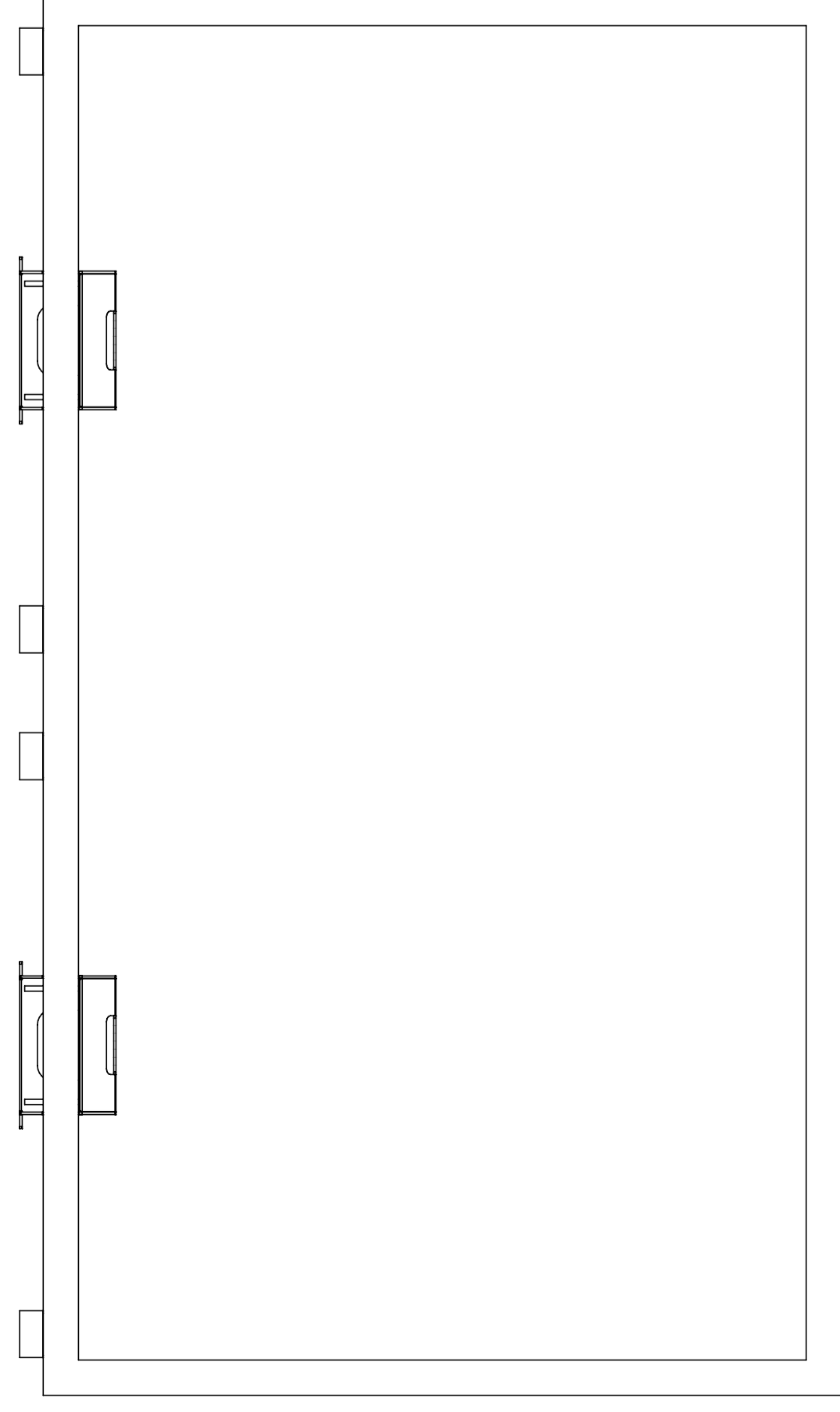
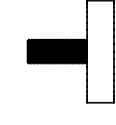


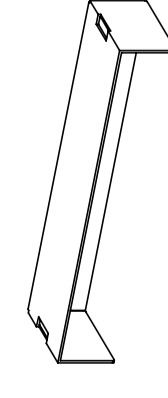
- A** stelaż biurka podwójny x 2 szt | double steel legs x 2 pcs



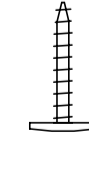
- B** regulator x 4 szt | adjustable feet x 4 pcs



- C** osłonka głowicy x 4 szt | top cover x 4 pcs



- D** wkręt x 24 szt | sharp screw x 24 pcs



potrzebne narzędzia | necessary tools

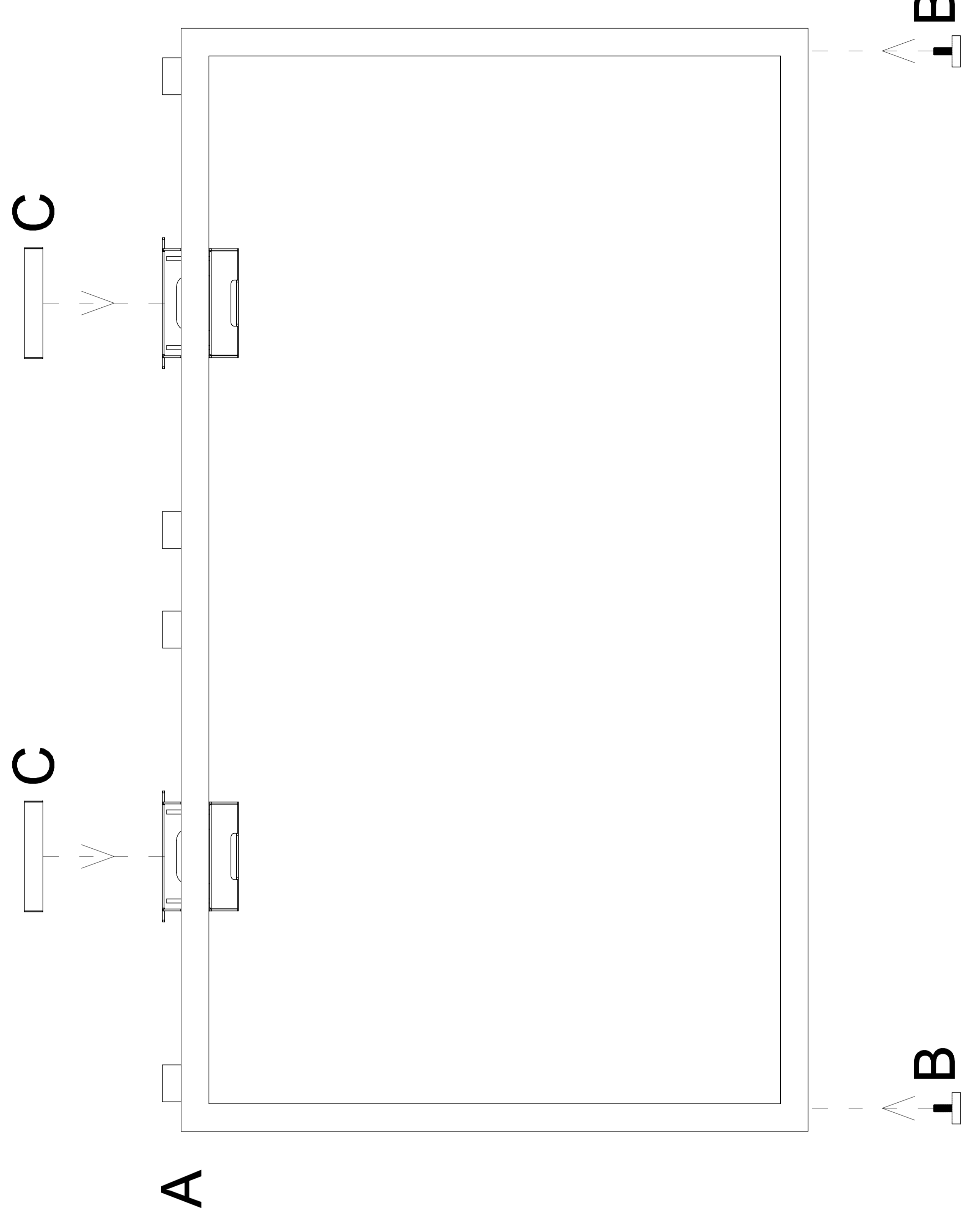


INSTRUKCJA MONTAŻU | ASSEMBLY INSTRUCTION

Q 7912, Q 7914, Q 7916

2019.06

1



2

