

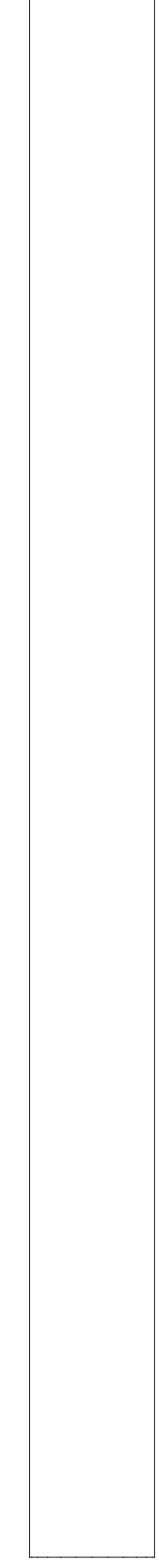


# INSTRUKCJA MONTAŻU I ASSEMBLY INSTRUCTION ST 501 U

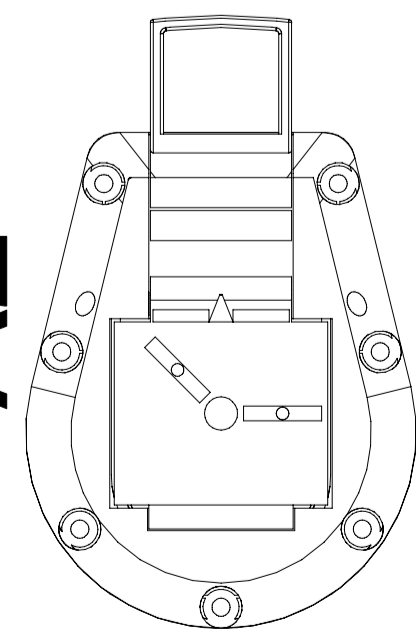
2020.06

**A** noga z osłoną x 1 szt | leg with cover x 1 pc

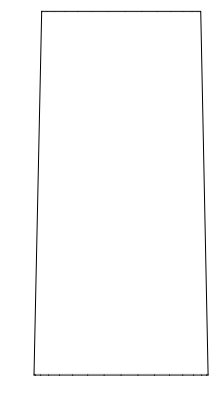
A1



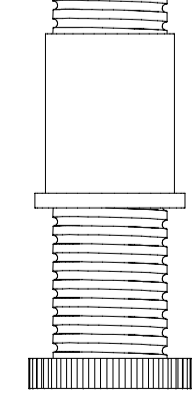
A2



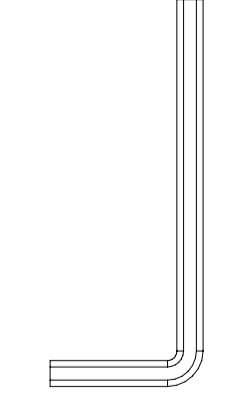
**B** osłona regulatora x 1 szt | leg cover x 1 pc



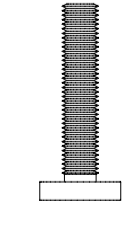
**C** regulator x 1 szt | adjuster x 1 pc



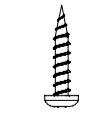
**D** klucz imbusowy x 1 szt | allen key x 1 pc



**E** śruba x 1 szt | screw x 1 pc



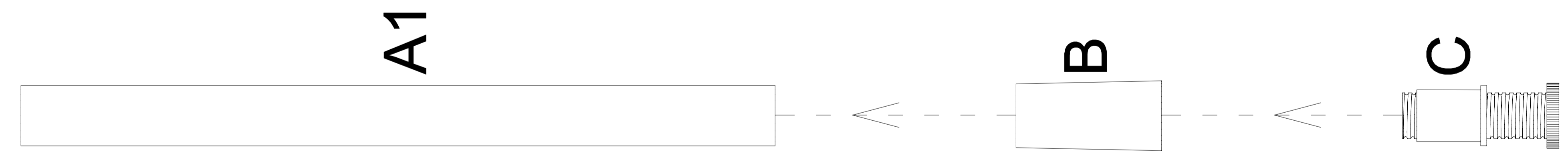
**F** wkręt x 7 szt | sharp screw x 7 pcs



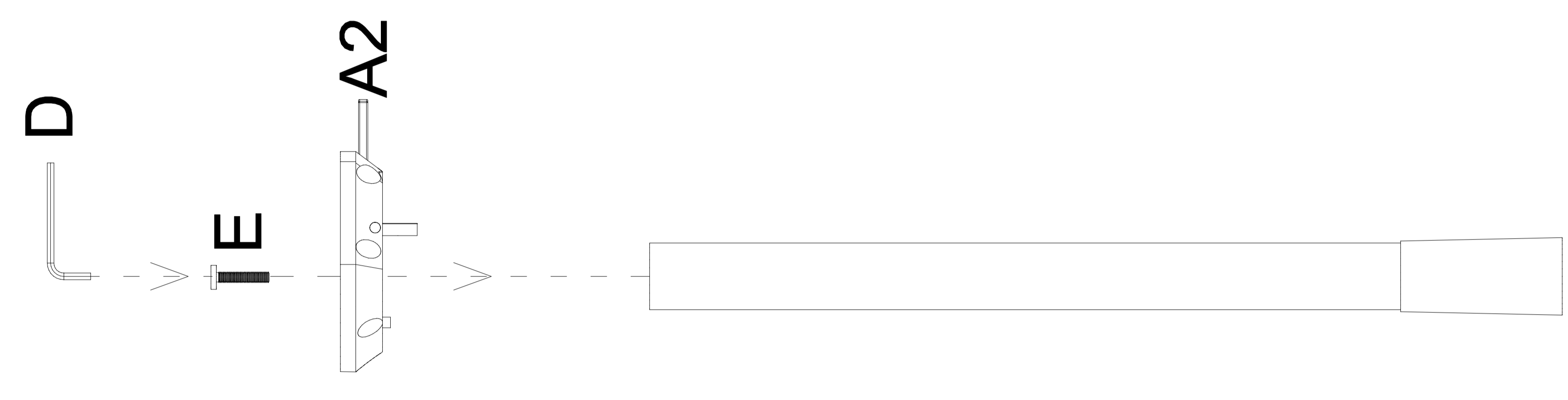
potrzebne narzędzia | necessary tools



1



2



3

